

Product datasheet for **TA369009**

CAB39L Rabbit Polyclonal Antibody

Product data:

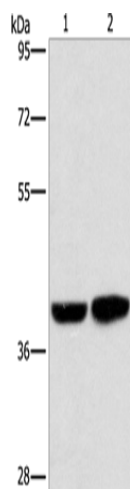
Product Type:	Primary Antibodies
Applications:	IHC, WB
Recommended Dilution:	WB: 500-2000 WB positive control: Human fetal brain tissue and 231 cells IHC: 25-100 Positive control: Human liver cancer Predicted cell location: Cytoplasm
Reactivity:	Human, Mouse
Host:	Rabbit
Isotype:	IgG
Clonality:	Polyclonal
Immunogen:	Fusion protein of human CAB39L
Formulation:	pH7.4 PBS, 0.05% NaN ₃ , 40% Glycerol
Concentration:	lot specific
Purification:	Antigen affinity purification
Conjugation:	Unconjugated
Storage:	Store at -20°C.
Stability:	1 year
Predicted Protein Size:	39 kDa
Gene Name:	calcium binding protein 39 like
Database Link:	Entrez Gene 81617 Human Q9H9S4
Background:	Calcium-binding protein 39-like is a protein that in humans is encoded by the CAB39L gene. CAB39L (calcium binding protein 39-like), also known as MO25L (MO25-like) or MO2L, is a 337 amino acid protein that is similar to MO25 and is found in the serum of nearly half of all patients diagnosed with acute monocytic leukemia. This suggests a role for CAB39L in carcinogenesis.



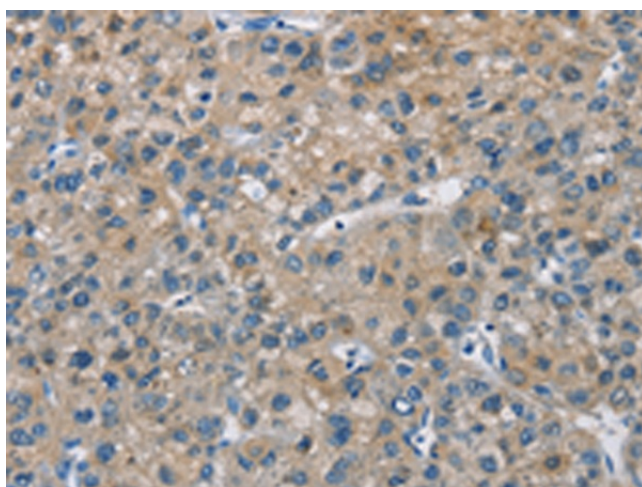
[View online »](#)

Synonyms: bA103J18.3; FLJ12577; MO2L; MO25-BETA; OTTHUMP00000018412; OTTHUMP00000205794; RP11-103J18.3

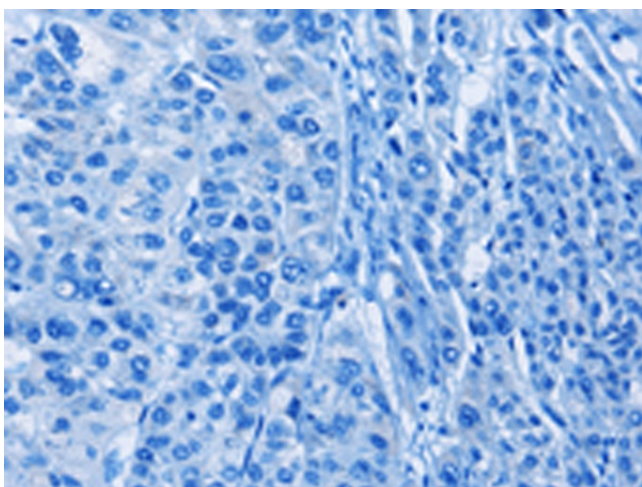
Product images:



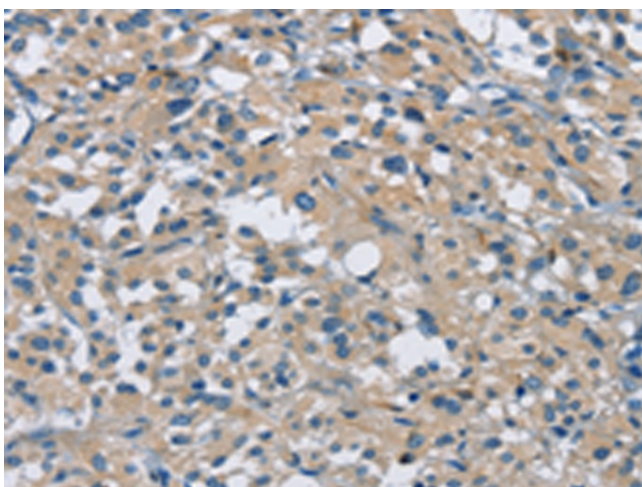
Gel: 8%SDS-PAGE
Lysate: 40 µg
Lane 1-2: Human fetal brain tissue
231 cells
Primary antibody: TA369009 (CAB39L Antibody)
at dilution 1/350
Secondary antibody: Goat anti rabbit IgG at
1/8000 dilution
Exposure time: 15 seconds



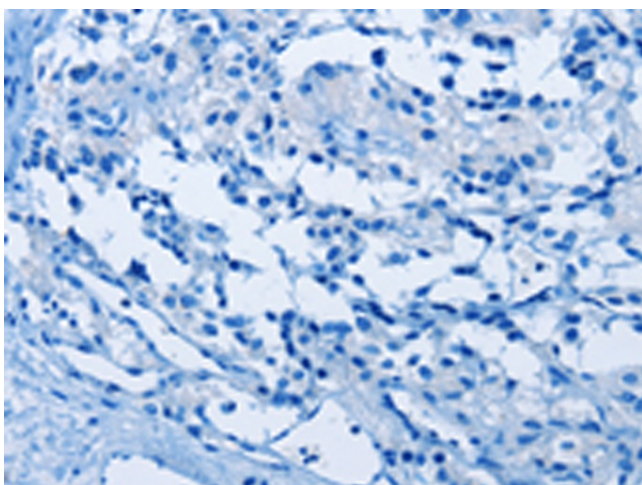
Immunohistochemistry of paraffin-embedded
Human liver cancer tissue using TA369009
(CAB39L Antibody) at dilution 1/30 (Original
magnification: ×200)



Immunohistochemistry of paraffin-embedded Human liver cancer tissue using TA369009 (CAB39L Antibody) at dilution 1/30, treated with fusion protein. (Original magnification: ×200)



Immunohistochemistry of paraffin-embedded Human thyroid cancer tissue using TA369009 (CAB39L Antibody) at dilution 1/30 (Original magnification: ×200)



Immunohistochemistry of paraffin-embedded Human thyroid cancer tissue using TA369009 (CAB39L Antibody) at dilution 1/30, treated with fusion protein. (Original magnification: ×200)