

Product datasheet for **TA368983**

ASAH1 Rabbit Polyclonal Antibody

Product data:

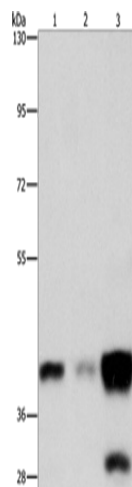
Product Type:	Primary Antibodies
Applications:	IHC, WB
Recommended Dilution:	WB: 500-2000 WB positive control: Human colon cancer tissue, human fetal brain and fetal lung tissue IHC: 50-200 Positive control: Human cervical cancer Predicted cell location: Cytoplasm
Reactivity:	Human, Mouse, Rat
Host:	Rabbit
Isotype:	IgG
Clonality:	Polyclonal
Immunogen:	Fusion protein of human ASAH1
Formulation:	pH7.4 PBS, 0.05% NaN ₃ , 40% Glycerol
Concentration:	lot specific
Purification:	Antigen affinity purification
Conjugation:	Unconjugated
Storage:	Store at -20°C.
Stability:	1 year
Predicted Protein Size:	45 kDa
Gene Name:	N-acylsphingosine amidohydrolase (acid ceramidase) 1
Database Link:	Entrez Gene 427 Human Q13510
Background:	This gene encodes a heterodimeric protein consisting of a nonglycosylated alpha subunit and a glycosylated beta subunit that is cleaved to the mature enzyme posttranslationally. The encoded protein catalyzes the synthesis and degradation of ceramide into sphingosine and fatty acid. Mutations in this gene have been associated with a lysosomal storage disorder known as Farber disease. Multiple transcript variants encoding several distinct isoforms have been identified for this gene.



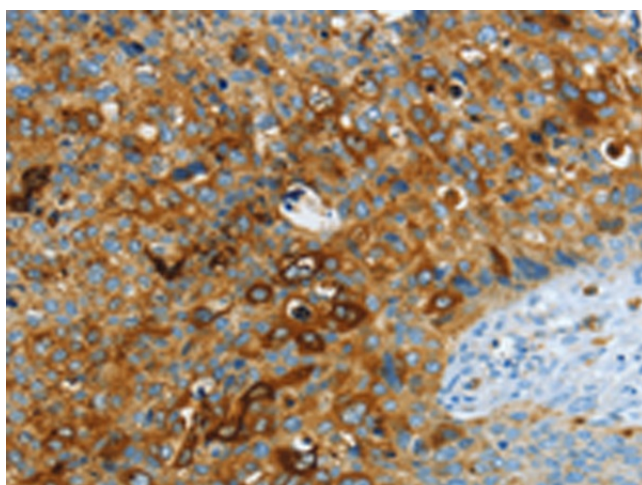
[View online »](#)

Synonyms: AC; ASAH; FLJ21558; FLJ22079; PHP; PHP32

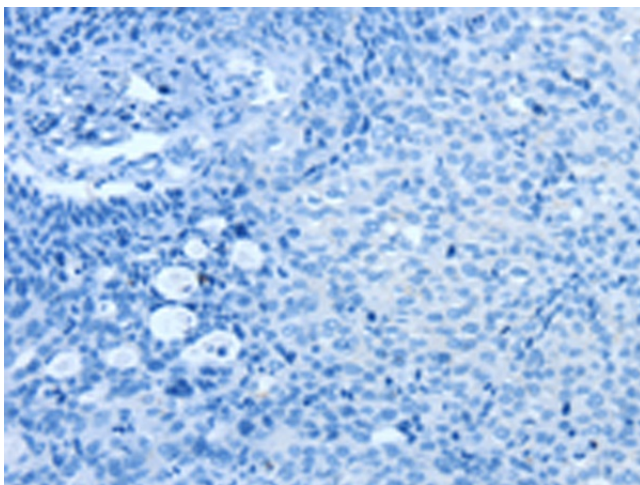
Product images:



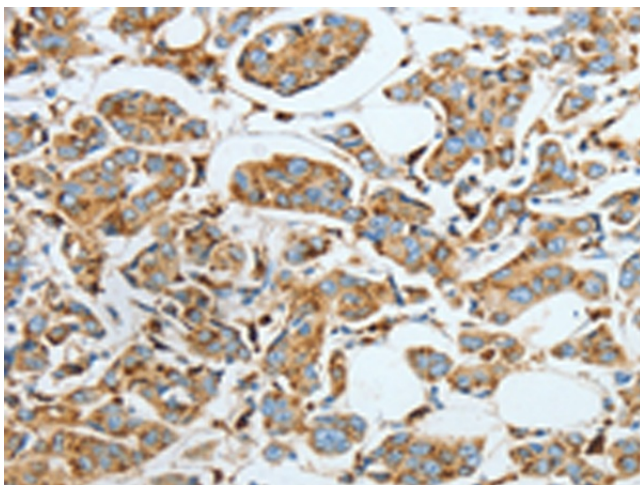
Gel: 8%SDS-PAGE
 Lysate: 40 µg
 Lane 1-3: Human colon cancer tissue
 human fetal brain tissue
 Human fetal lung tissue
 Primary antibody: TA368983 (ASAH1 Antibody) at dilution 1/800
 Secondary antibody: Goat anti rabbit IgG at 1/8000 dilution
 Exposure time: 30 seconds



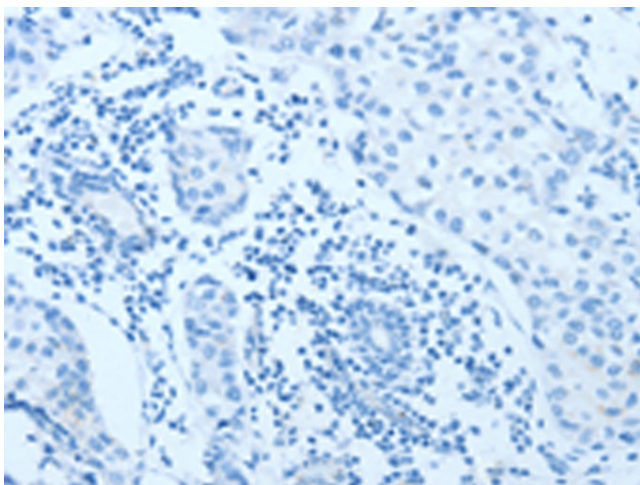
Immunohistochemistry of paraffin-embedded Human cervical cancer tissue using TA368983 (ASAH1 Antibody) at dilution 1/40 (Original magnification: x200)



Immunohistochemistry of paraffin-embedded Human cervical cancer tissue using TA368983 (ASAH1 Antibody) at dilution 1/40, treated with fusion protein. (Original magnification: ×200)



Immunohistochemistry of paraffin-embedded Human breast cancer tissue using TA368983 (ASAH1 Antibody) at dilution 1/40 (Original magnification: ×200)



Immunohistochemistry of paraffin-embedded Human breast cancer tissue using TA368983 (ASAH1 Antibody) at dilution 1/40, treated with fusion protein. (Original magnification: ×200)