

Product datasheet for **TA368976**

THOC7 Rabbit Polyclonal Antibody

Product data:

Product Type:	Primary Antibodies
Applications:	IHC, WB
Recommended Dilution:	WB: 500-2000 WB positive control: Mouse spleen and human fetal liver tissue, hela cells and human fetal brain tissue IHC: 50-200 Positive control: Human thyroid cancer Predicted cell location: Nucleus
Reactivity:	Human, Mouse
Host:	Rabbit
Isotype:	IgG
Clonality:	Polyclonal
Immunogen:	Fusion protein of human THOC7
Formulation:	pH7.4 PBS, 0.05% NaN ₃ , 40% Glycerol
Concentration:	lot specific
Purification:	Antigen affinity purification
Conjugation:	Unconjugated
Storage:	Store at -20°C.
Stability:	1 year
Predicted Protein Size:	24 kDa
Gene Name:	THO complex 7
Database Link:	Entrez Gene 80145 Human Q6I9Y2



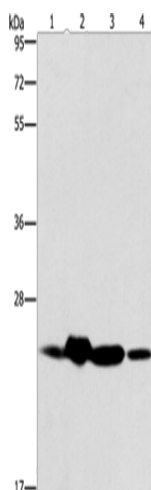
[View online »](#)

Background:

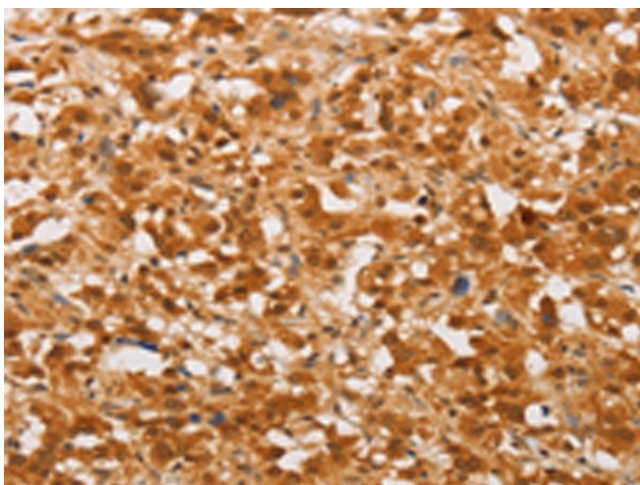
Required for efficient export of polyadenylated RNA. Acts as component of the THO subcomplex of the TREX complex which is thought to couple mRNA transcription, processing and nuclear export, and which specifically associates with spliced mRNA and not with unspliced pre-mRNA. TREX is recruited to spliced mRNAs by a transcription-independent mechanism, binds to mRNA upstream of the exon-junction complex (EJC) and is recruited in a splicing- and cap-dependent manner to a region near the 5' end of the mRNA where it functions in mRNA export to the cytoplasm via the TAP/NFX1 pathway. The TREX complex is essential for the export of Kaposi's sarcoma-associated herpesvirus (KSHV) intronless mRNAs and infectious virus production.

Synonyms:

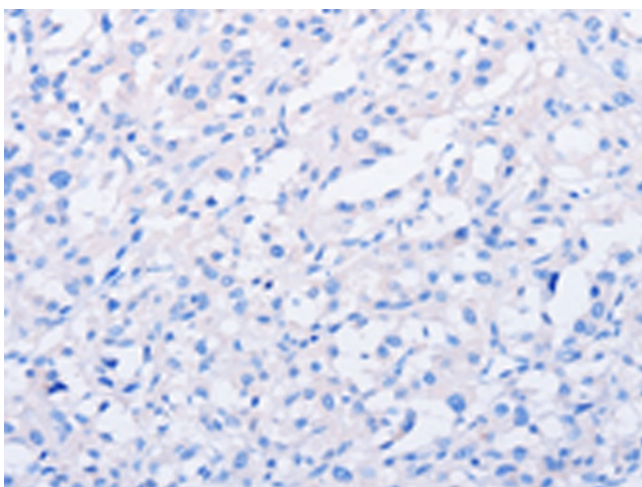
FLJ23445; fSAP24; hTREX30; NIF3L1BP1

Product images:


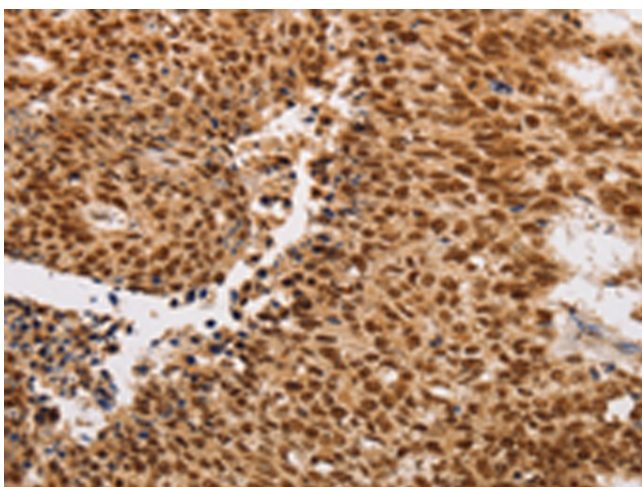
Gel: 10%SDS-PAGE
Lysate: 40 µg
Lane 1-4: Mouse spleen tissue
human fetal liver tissue
hela cells
human fetal brain tissue
Primary antibody: TA368976 (THOC7 Antibody) at dilution 1/450
Secondary antibody: Goat anti rabbit IgG at 1/8000 dilution
Exposure time: 20 seconds



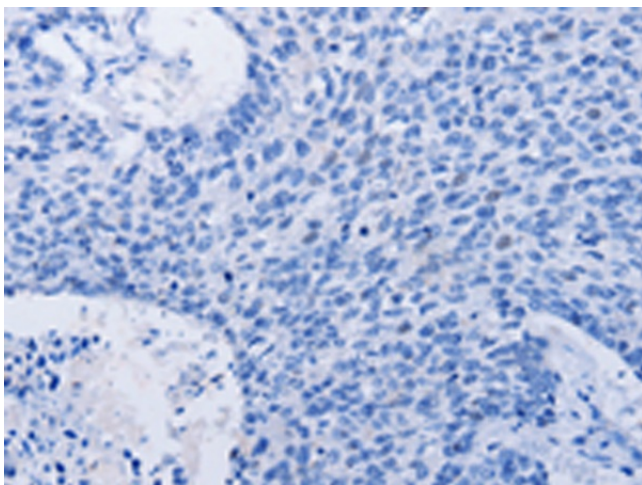
Immunohistochemistry of paraffin-embedded Human thyroid cancer tissue using TA368976 (THOC7 Antibody) at dilution 1/30 (Original magnification: ×200)



Immunohistochemistry of paraffin-embedded Human thyroid cancer tissue using TA368976 (THOC7 Antibody) at dilution 1/30, treated with fusion protein. (Original magnification: ×200)



Immunohistochemistry of paraffin-embedded Human lung cancer tissue using TA368976 (THOC7 Antibody) at dilution 1/30 (Original magnification: ×200)



Immunohistochemistry of paraffin-embedded Human lung cancer tissue using TA368976 (THOC7 Antibody) at dilution 1/30, treated with fusion protein. (Original magnification: ×200)