

Product datasheet for **TA368975**

GSTA2 Rabbit Polyclonal Antibody

Product data:

Product Type:	Primary Antibodies
Applications:	IHC, WB
Recommended Dilution:	WB: 500-2000 WB positive control: Human fetal liver tissue IHC: 25-100 Positive control: Human gastric cancer Predicted cell location: cytoplasm
Reactivity:	Human
Host:	Rabbit
Isotype:	IgG
Clonality:	Polyclonal
Immunogen:	Full length fusion protein
Formulation:	pH7.4 PBS, 0.05% NaN ₃ , 40% Glycerol
Concentration:	lot specific
Purification:	Antigen affinity purification
Conjugation:	Unconjugated
Storage:	Store at -20°C.
Stability:	1 year
Predicted Protein Size:	26 kDa
Gene Name:	glutathione S-transferase alpha 2
Database Link:	Entrez Gene 2939 Human P09210



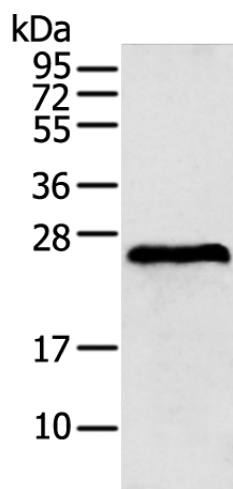
[View online »](#)

Background:

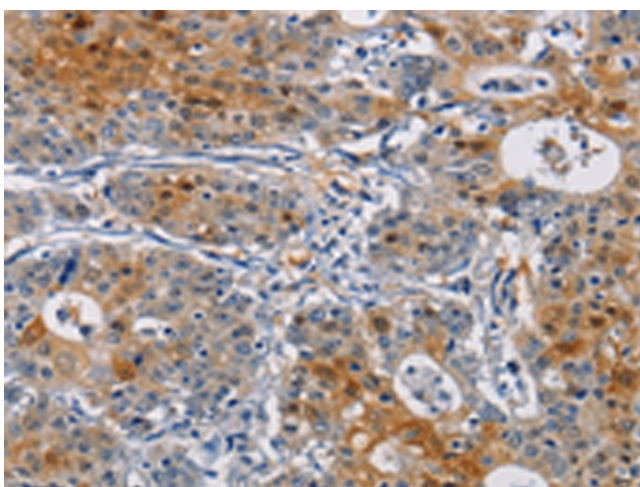
Cytosolic and membrane-bound forms of glutathione S-transferase are encoded by two distinct supergene families. These enzymes function in the detoxification of electrophilic compounds, including carcinogens, therapeutic drugs, environmental toxins and products of oxidative stress, by conjugation with glutathione. The genes encoding these enzymes are known to be highly polymorphic. These genetic variations can change an individual's susceptibility to carcinogens and toxins as well as affect the toxicity and efficacy of some drugs. At present, eight distinct classes of the soluble cytoplasmic mammalian glutathione S-transferases have been identified: alpha, kappa, mu, omega, pi, sigma, theta and zeta.

Synonyms:

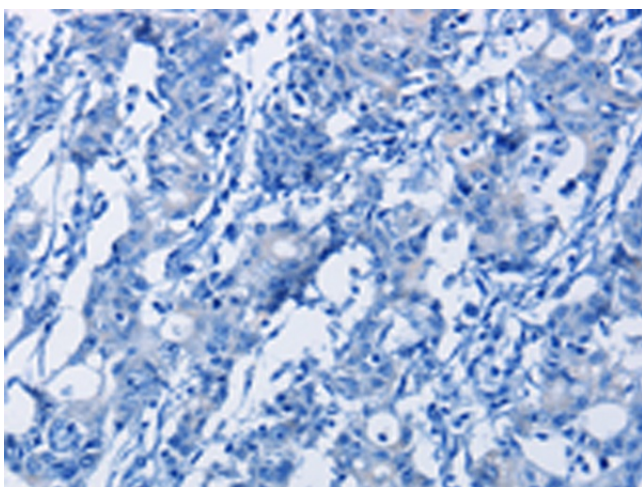
GST-gamma; GST2; GSTA2-2; GTA2; GTH2; MGC10525

Product images:

Gel: 12%SDS-PAGE
Lysate: 40 µg
Lane: Human fetal liver tissue
Primary antibody: TA368975 (GSTA2 Antibody) at dilution 1/350
Secondary antibody: Goat anti rabbit IgG at 1/8000 dilution
Exposure time: 1 second



Immunohistochemistry of paraffin-embedded Human gastric cancer tissue using TA368975 (GSTA2 Antibody) at dilution 1/50 (Original magnification: ×200)



Immunohistochemistry of paraffin-embedded Human gastric cancer tissue using TA368975 (GSTA2 Antibody) at dilution 1/50, treated with fusion protein. (Original magnification: ×200)