

## Product datasheet for **TA368962S**

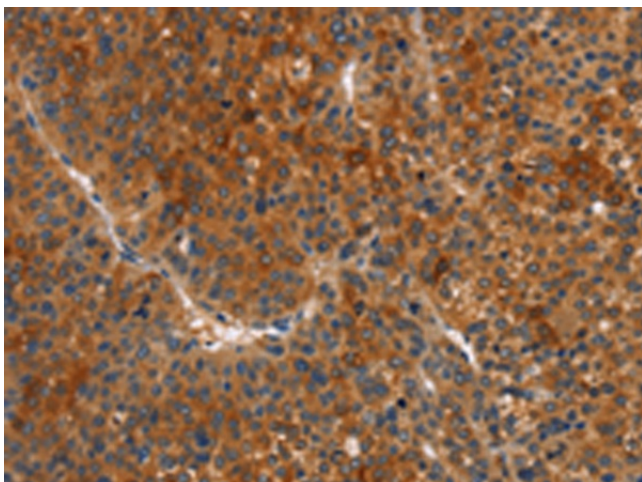
### MAPK15 Rabbit Polyclonal Antibody

#### Product data:

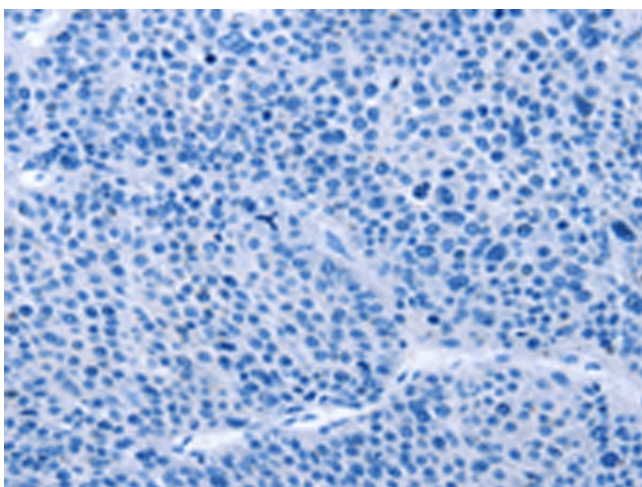
Product Type:	Primary Antibodies
Applications:	IHC
Recommended Dilution:	IHC: 25-100 Positive control: Human liver cancer Predicted cell location: Cytoplasm
Reactivity:	Human
Host:	Rabbit
Isotype:	IgG
Clonality:	Polyclonal
Immunogen:	Fusion protein of human MAPK15
Formulation:	pH7.4 PBS, 0.05% NaN <sub>3</sub> , 40% Glycerol
Purification:	Antigen affinity purification
Conjugation:	Unconjugated
Storage:	Store at -20°C.
Stability:	1 year
Gene Name:	mitogen-activated protein kinase 15
Database Link:	<a href="#">Entrez Gene 225689 Human Q8TD08</a>
Background:	MAPK15 (mitogen-activated protein kinase 15, ERK8) is a 544 amino acid protein that belongs to the CMGC Ser/Thr protein kinase family (MAP kinase subfamily). MAP kinases play a significant role in many biological processes, including cell adhesion and spreading, cell differentiation and apoptosis. MAPK15 functions as a catalytic kinase using ATP to produce ADP and a phosphoprotein. A TXY motif, containing one threonine and one tyrosine residue, activates the MAP kinases upon phosphorylation. MAPK15 is a ubiquitously expressed protein with highest expression found in lung and kidney.
Synonyms:	ERK7; ERK8



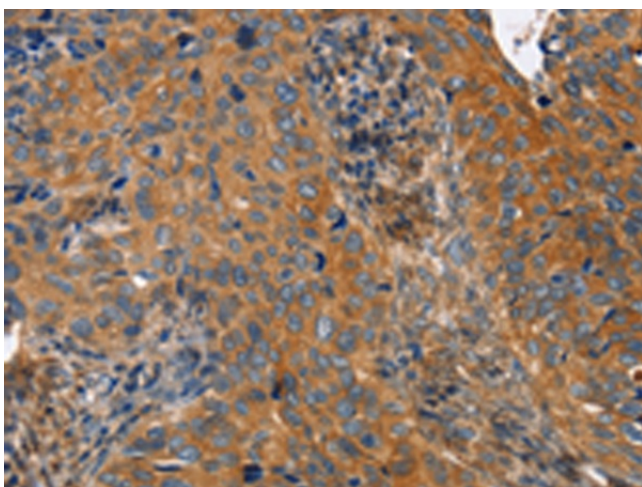
[View online »](#)

**Product images:**

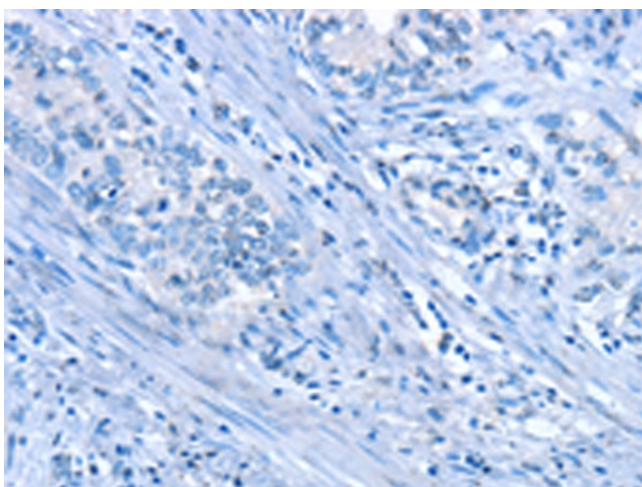
Immunohistochemistry of paraffin-embedded Human liver cancer tissue using [TA368962] (MAPK15 Antibody) at dilution 1/15 (Original magnification:  $\times 200$ )



Immunohistochemistry of paraffin-embedded Human liver cancer tissue using [TA368962] (MAPK15 Antibody) at dilution 1/15, treated with fusion protein. (Original magnification:  $\times 200$ )



Immunohistochemistry of paraffin-embedded Human cervical cancer tissue using [TA368962] (MAPK15 Antibody) at dilution 1/15 (Original magnification: ×200)



Immunohistochemistry of paraffin-embedded Human cervical cancer tissue using [TA368962] (MAPK15 Antibody) at dilution 1/15, treated with fusion protein. (Original magnification: ×200)