

Product datasheet for **TA368955**

Germinal Center Kinase (MAP4K2) Rabbit Polyclonal Antibody

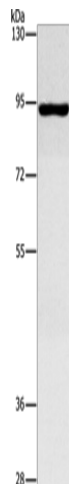
Product data:

| | |
|-------------------------|--|
| Product Type: | Primary Antibodies |
| Applications: | WB |
| Recommended Dilution: | WB: 500-2000 WB positive control: Hela cells |
| Reactivity: | Human, Mouse |
| Host: | Rabbit |
| Isotype: | IgG |
| Clonality: | Polyclonal |
| Immunogen: | Fusion protein of human MAP4K2 |
| Formulation: | pH7.4 PBS, 0.05% NaN ₃ , 40% Glycerol |
| Concentration: | lot specific |
| Purification: | Antigen affinity purification |
| Conjugation: | Unconjugated |
| Storage: | Store at -20°C. |
| Stability: | 1 year |
| Predicted Protein Size: | 92 kDa |
| Gene Name: | mitogen-activated protein kinase kinase kinase kinase 2 |
| Database Link: | Entrez Gene 5871 Human Q12851 |
| Background: | The protein encoded by this gene is a member of the serine/threonine protein kinase family. Although this kinase is found in many tissues, its expression in lymphoid follicles is restricted to the cells of germinal centre, where it may participate in B-cell differentiation. This kinase can be activated by TNF-alpha, and has been shown to specifically activate MAP kinases. This kinase is also found to interact with TNF receptor-associated factor 2 (TRAF2), which is involved in the activation of MAP3K1/MEKK1. |
| Synonyms: | BL44; GCK; RAB8IP |



[View online »](#)

Product images:



Gel: 8%SDS-PAGE

Lysate: 40 µg

Lane: HeLa cells

Primary antibody: TA368955 (MAP4K2 Antibody)
at dilution 1/700

Secondary antibody: Goat anti rabbit IgG at
1/8000 dilution

Exposure time: 5 seconds