

## Product datasheet for **TA368954**

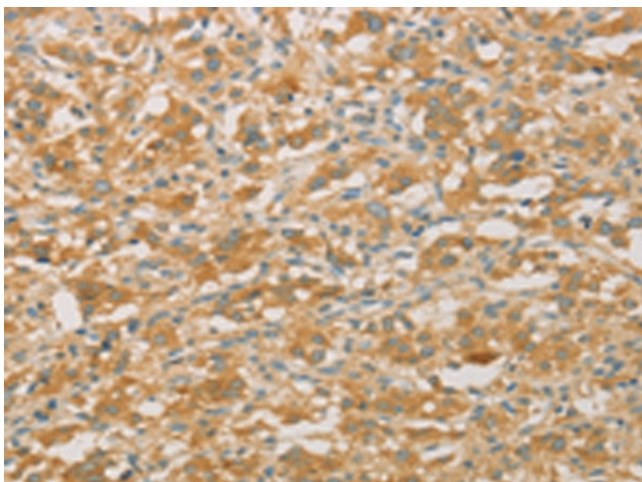
### PRPSAP1 Rabbit Polyclonal Antibody

#### Product data:

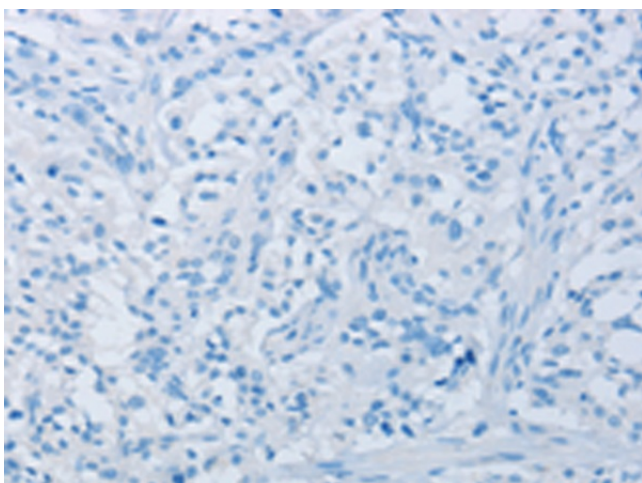
Product Type:	Primary Antibodies
Applications:	IHC
Recommended Dilution:	IHC: 50-200 Positive control: Human thyroid cancer Predicted cell location: Cytoplasm
Reactivity:	Human, Mouse, Rat
Host:	Rabbit
Isotype:	IgG
Clonality:	Polyclonal
Immunogen:	Fusion protein of human PRPSAP1
Formulation:	pH7.4 PBS, 0.05% NaN <sub>3</sub> , 40% Glycerol
Concentration:	lot specific
Purification:	Antigen affinity purification
Conjugation:	Unconjugated
Storage:	Store at -20°C.
Stability:	1 year
Gene Name:	phosphoribosyl pyrophosphate synthetase-associated protein 1
Database Link:	<a href="#">Entrez Gene 5635 Human Q14558</a>
Background:	PRPSAP1 (phosphoribosyl pyrophosphate synthetase-associated protein 1), also known as PAP39, is a 356 amino acid ubiquitous protein belonging to the ribose-phosphate pyrophosphokinase family. PRPSAP1 may play a negative regulatory role in 5-phosphoribose 1-diphosphate synthesis and is encoded by a gene mapping to human chromosome 17q25.1.
Synonyms:	PAP39



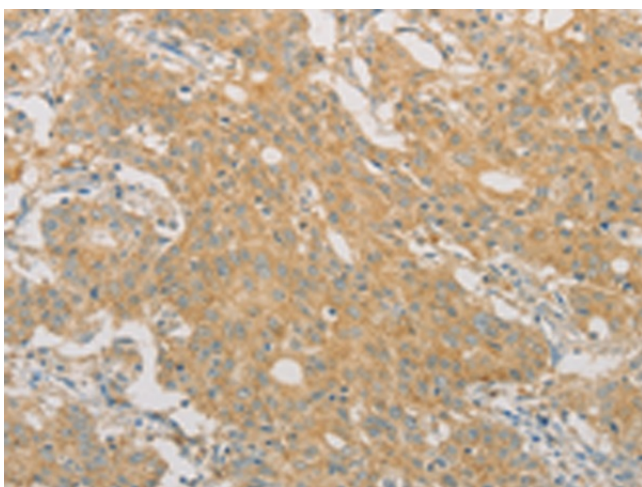
[View online »](#)

**Product images:**

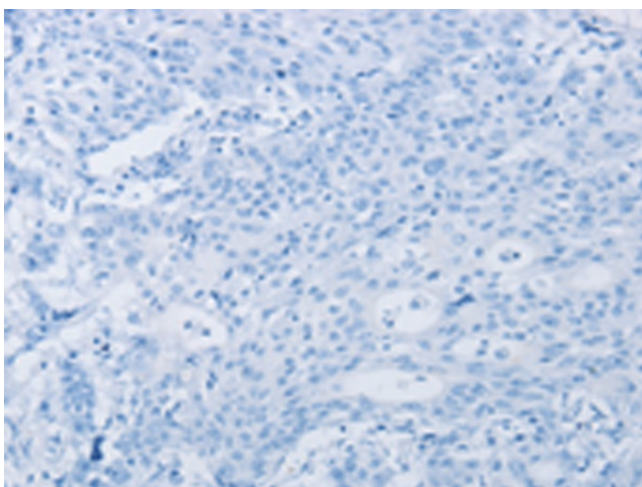
Immunohistochemistry of paraffin-embedded Human thyroid cancer tissue using TA368954 (PRPSAP1 Antibody) at dilution 1/50 (Original magnification: ×200)



Immunohistochemistry of paraffin-embedded Human thyroid cancer tissue using TA368954 (PRPSAP1 Antibody) at dilution 1/50, treated with fusion protein. (Original magnification: ×200)



Immunohistochemistry of paraffin-embedded Human gastric cancer tissue using TA368954 (PRPSAP1 Antibody) at dilution 1/50 (Original magnification:  $\times 200$ )



Immunohistochemistry of paraffin-embedded Human gastric cancer tissue using TA368954 (PRPSAP1 Antibody) at dilution 1/50, treated with fusion protein. (Original magnification:  $\times 200$ )