

## Product datasheet for **TA368942S**

### TLR3 Rabbit Polyclonal Antibody

#### Product data:

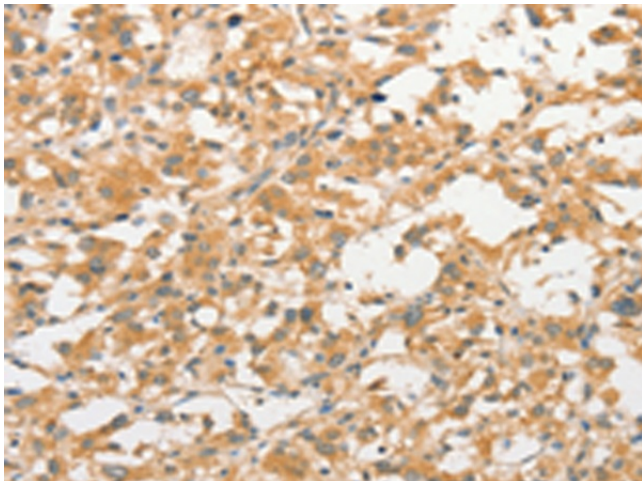
|                       |   |
|-----------------------|---|
| Product Type:         | Primary Antibodies  |
| Applications:         | IHC   |
| Recommended Dilution: | IHC: 50-200<br>Positive control: Human thyroid cancer<br>Predicted cell location: Cytoplasm |
| Reactivity:           | Human   |
| Host:                 | Rabbit  |
| Isotype:              | IgG   |
| Clonality:            | Polyclonal  |
| Immunogen:            | Fusion protein of human TLR3  |
| Formulation:          | pH7.4 PBS, 0.05% NaN3, 40% Glycerol   |
| Purification:         | Antigen affinity purification   |
| Conjugation:          | Unconjugated  |
| Storage:              | Store at -20°C.   |
| Stability:            | 1 year  |
| Gene Name:            | toll like receptor 3  |
| Database Link:        | <a href="#">Entrez Gene 7098 Human O15455</a>   |

**Background:** The protein encoded by this gene is a member of the Toll-like receptor (TLR) family which plays a fundamental role in pathogen recognition and activation of innate immunity. TLRs are highly conserved from Drosophila to humans and share structural and functional similarities. They recognize pathogen-associated molecular patterns (PAMPs) that are expressed on infectious agents, and mediate the production of cytokines necessary for the development of effective immunity. The various TLRs exhibit different patterns of expression. This receptor is most abundantly expressed in placenta and pancreas, and is restricted to the dendritic subpopulation of the leukocytes. It recognizes dsRNA associated with viral infection, and induces the activation of NF-kappaB and the production of type I interferons.

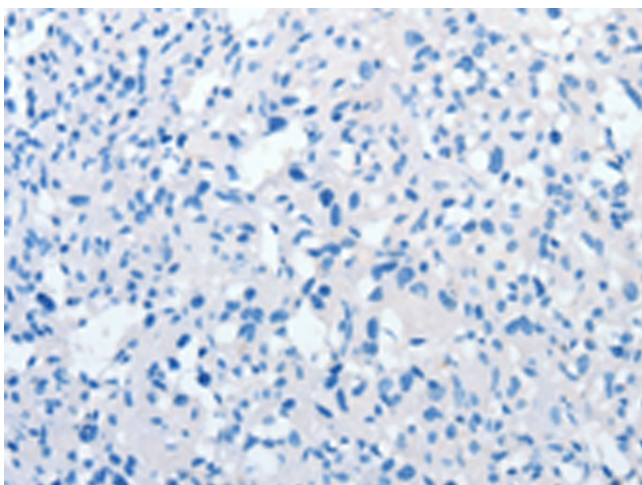
**Synonyms:** CD283



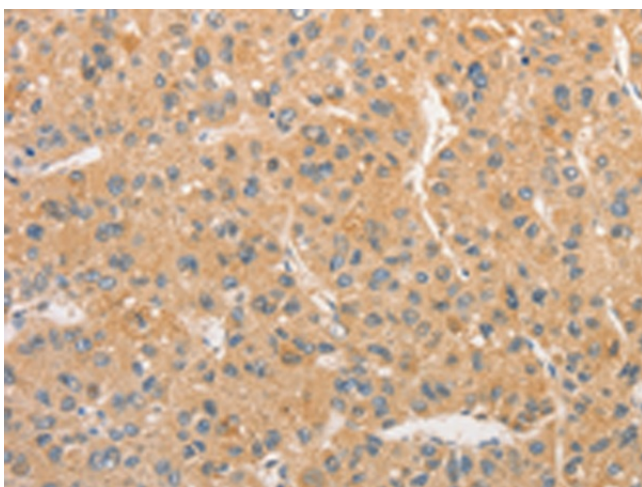
[View online »](#)

**Product images:**

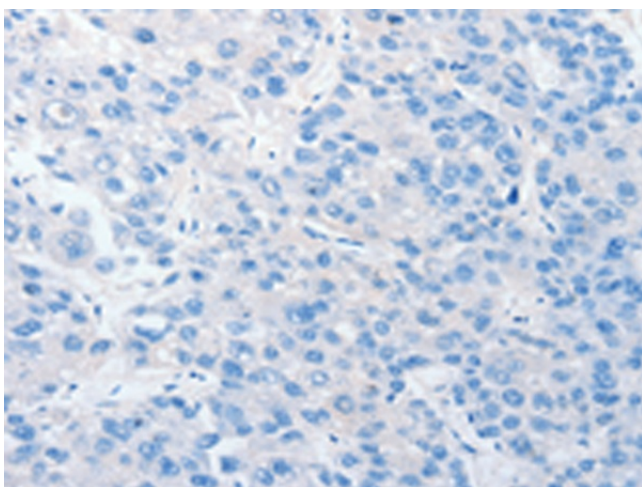
Immunohistochemistry of paraffin-embedded Human thyroid cancer tissue using [TA368942] (TLR3 Antibody) at dilution 1/40 (Original magnification:  $\times 200$ )



Immunohistochemistry of paraffin-embedded Human thyroid cancer tissue using [TA368942] (TLR3 Antibody) at dilution 1/40, treated with fusion protein. (Original magnification:  $\times 200$ )



Immunohistochemistry of paraffin-embedded Human liver cancer tissue using [TA368942] (TLR3 Antibody) at dilution 1/40 (Original magnification:  $\times 200$ )



Immunohistochemistry of paraffin-embedded Human liver cancer tissue using [TA368942] (TLR3 Antibody) at dilution 1/40, treated with fusion protein. (Original magnification:  $\times 200$ )