

Product datasheet for **TA368939**

CDCA8 Rabbit Polyclonal Antibody

Product data:

Product Type:	Primary Antibodies
Applications:	IHC, WB
Recommended Dilution:	WB: 1000-5000 WB positive control: 293T cells IHC: 50-200 Positive control: Human colon cancer Predicted cell location: Nucleus
Reactivity:	Human
Host:	Rabbit
Isotype:	IgG
Clonality:	Polyclonal
Immunogen:	Fusion protein of human CDCA8
Formulation:	pH7.4 PBS, 0.05% NaN ₃ , 40% Glycerol
Concentration:	lot specific
Purification:	Antigen affinity purification
Conjugation:	Unconjugated
Storage:	Store at -20°C.
Stability:	1 year
Predicted Protein Size:	31 kDa
Gene Name:	cell division cycle associated 8
Database Link:	Entrez Gene 55143 Human Q53HL2

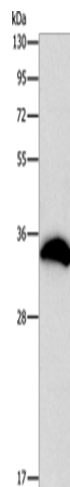
Background: This gene encodes a component of the chromosomal passenger complex. This complex is an essential regulator of mitosis and cell division. This protein is cell-cycle regulated and is required for chromatin-induced microtubule stabilization and spindle formation. Alternate splicing results in multiple transcript variants. Pseudogenes of this gene are found on chromosomes 7, 8 and 16.



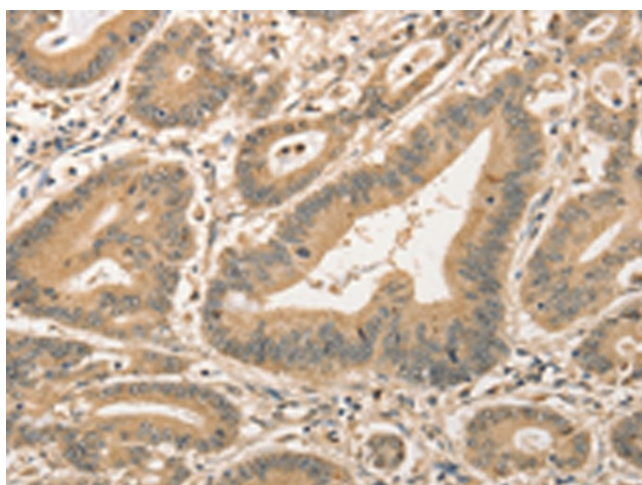
[View online »](#)

Synonyms: BOR; BOREALIN; Dasra-B; DasraB; FLJ10468; FLJ12042; hDasra-B; MESRGP; OTTHUMP00000004514; PESCRG3

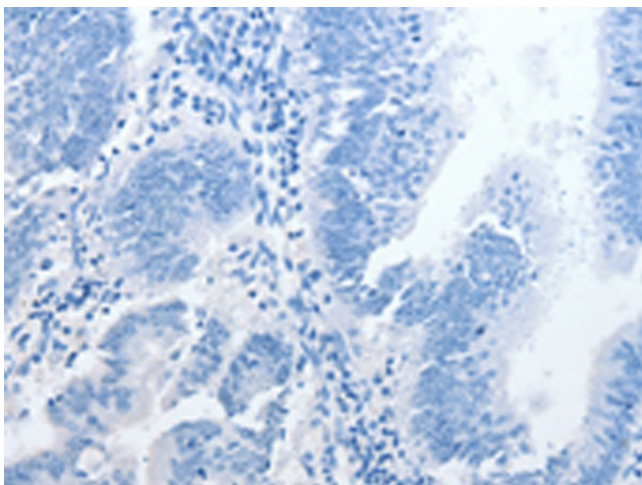
Product images:



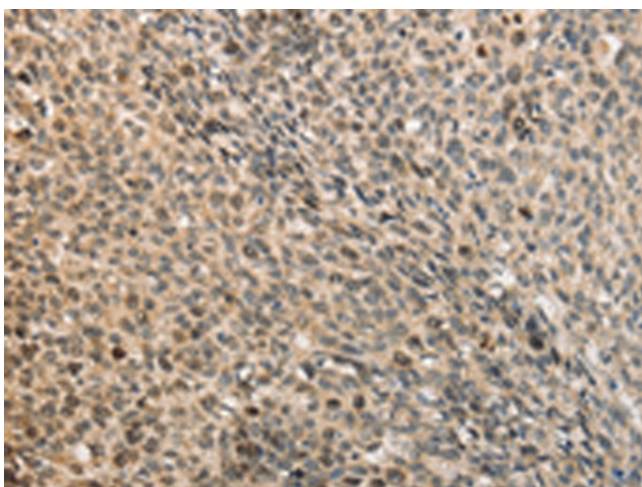
Gel: 15%SDS-PAGE
Lysate: 40 μ g
Lane: 293T cells
Primary antibody: TA368939 (CDCA8 Antibody) at dilution 1/800
Secondary antibody: Goat anti rabbit IgG at 1/8000 dilution
Exposure time: 1 second



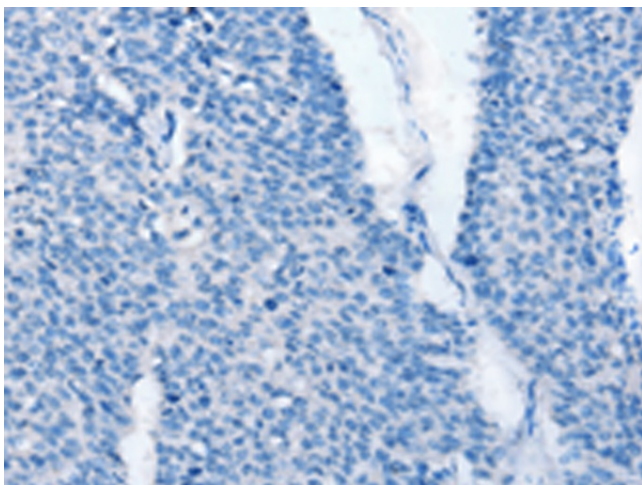
Immunohistochemistry of paraffin-embedded Human colon cancer tissue using TA368939 (CDCA8 Antibody) at dilution 1/40 (Original magnification: $\times 200$)



Immunohistochemistry of paraffin-embedded Human colon cancer tissue using TA368939 (CDCA8 Antibody) at dilution 1/40, treated with fusion protein. (Original magnification: $\times 200$)



Immunohistochemistry of paraffin-embedded Human lung cancer tissue using TA368939 (CDCA8 Antibody) at dilution 1/40 (Original magnification: $\times 200$)



Immunohistochemistry of paraffin-embedded Human lung cancer tissue using TA368939 (CDCA8 Antibody) at dilution 1/40, treated with fusion protein. (Original magnification: $\times 200$)