

Product datasheet for **TA368933**

ARSF Rabbit Polyclonal Antibody

Product data:

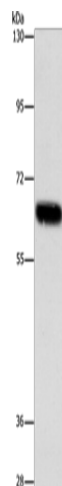
Product Type:	Primary Antibodies
Applications:	WB
Recommended Dilution:	WB: 200-1000 WB positive control: Human placenta tissue
Reactivity:	Human
Host:	Rabbit
Isotype:	IgG
Clonality:	Polyclonal
Immunogen:	Fusion protein of human ARSF
Formulation:	pH7.4 PBS, 0.05% NaN ₃ , 40% Glycerol
Concentration:	lot specific
Purification:	Antigen affinity purification
Conjugation:	Unconjugated
Storage:	Store at -20°C.
Stability:	1 year
Predicted Protein Size:	66 kDa
Gene Name:	arylsulfatase F
Database Link:	Entrez Gene 416 Human P54793

Background: This gene is a member of the sulfatase family, and more specifically, the arylsulfatase subfamily. Members of the subfamily share similarity in sequence and splice sites, and are clustered together on chromosome X, suggesting that they are derived from recent gene duplication events. Sulfatases are essential for the correct composition of bone and cartilage matrix. The activity of this protein, unlike that of arylsulfatase E, is not inhibited by warfarin. Multiple alternatively spliced variants, encoding the same protein, have been identified.

Synonyms: ASF; OTTHUMP00000022857



[View online »](#)

Product images:

Gel: 6%SDS-PAGE

Lysate: 40 µg

Lane: Human placenta tissue

Primary antibody: TA368933 (ARSF Antibody) at dilution 1/216.7

Secondary antibody: Goat anti rabbit IgG at 1/8000 dilution

Exposure time: 40 seconds