

Product datasheet for **TA368925**

ARMER (ARL6IP1) Rabbit Polyclonal Antibody

Product data:

| | |
|-----------------------|--|
| Product Type: | Primary Antibodies |
| Applications: | IHC |
| Recommended Dilution: | IHC: 25-100 Positive control: Human breast cancer Predicted cell location: Cytoplasm |
| Reactivity: | Human, Mouse |
| Host: | Rabbit |
| Isotype: | IgG |
| Clonality: | Polyclonal |
| Immunogen: | Fusion protein of human ARL6IP1 |
| Formulation: | pH7.4 PBS, 0.05% NaN ₃ , 40% Glycerol |
| Concentration: | lot specific |
| Purification: | Antigen affinity purification |
| Conjugation: | Unconjugated |
| Storage: | Store at -20°C. |
| Stability: | 1 year |
| Gene Name: | ADP ribosylation factor like GTPase 6 interacting protein 1 |
| Database Link: | Entrez Gene 23204 Human Q15041 |

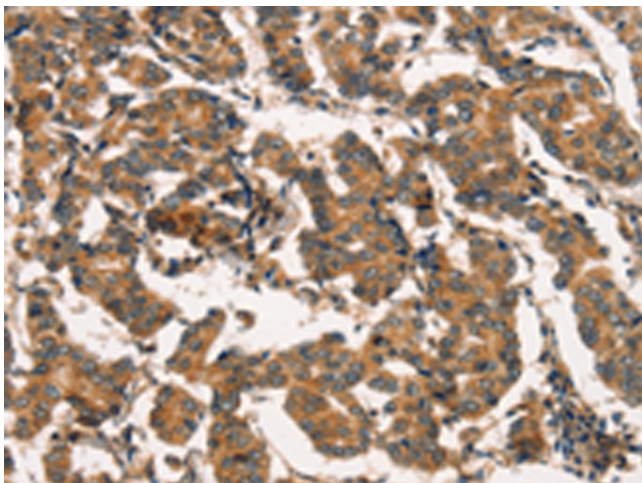
Background: ARMER (apoptotic regulator in the membrane of the endoplasmic reticulum), also known as ADP-ribosylation-like factor 6-interacting protein 1 (ARL6IP1 or AIP1), is a multi-pass membrane protein that belongs to the Ras superfamily. It is expressed in brain, thymus, lung, bone marrow and, to a lesser extent, in spleen, kidney and liver. ARMER is not found in the heart and is found predominantly in early myeloid progenitor cells localizing to the intracytoplasmic membranes. It interacts with ARL6, inhibits caspase-9 activity by inhibiting proteolysis of downstream substrates (including LEHD-AFC, vimentin and caspase-3) and is down-regulated during myeloid differentiation. ARMER may play a role in membrane trafficking, protein transport or cell signaling during hematopoietic maturation.



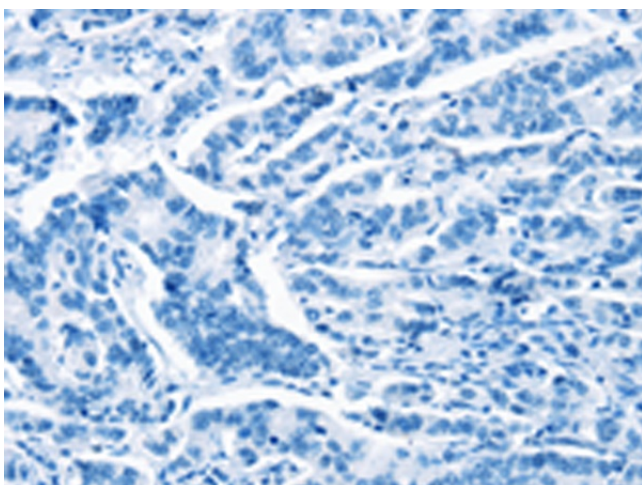
[View online »](#)

Synonyms: Aip-1; AIP1; ARL6IP; ARMER; KIAA0069

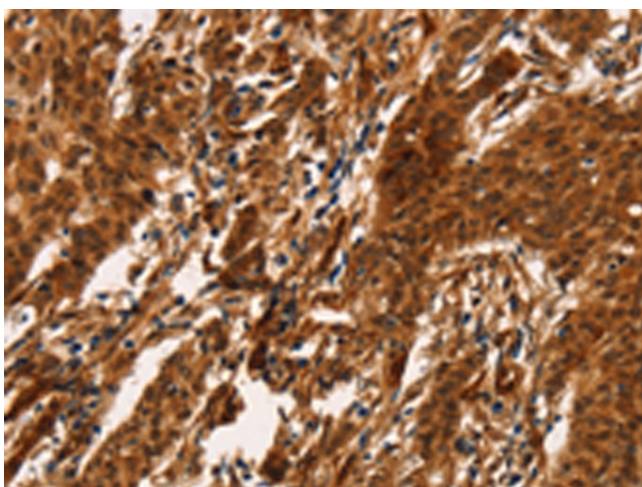
Product images:



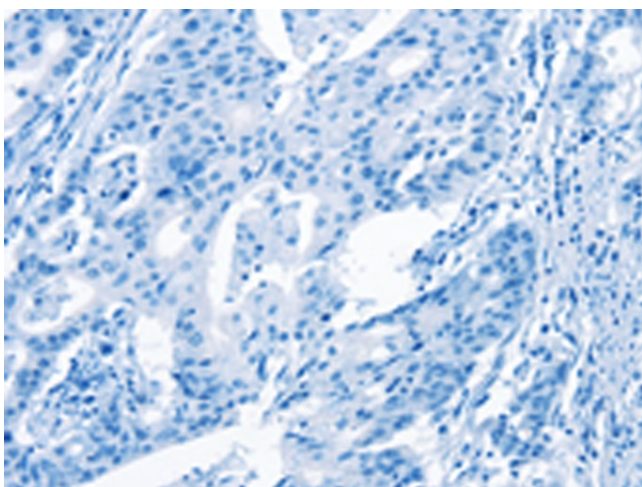
Immunohistochemistry of paraffin-embedded Human breast cancer tissue using TA368925 (ARL6IP1 Antibody) at dilution 1/20 (Original magnification: $\times 200$)



Immunohistochemistry of paraffin-embedded Human breast cancer tissue using TA368925 (ARL6IP1 Antibody) at dilution 1/20, treated with fusion protein. (Original magnification: $\times 200$)



Immunohistochemistry of paraffin-embedded Human gastric cancer tissue using TA368925 (ARL6IP1 Antibody) at dilution 1/20 (Original magnification: $\times 200$)



Immunohistochemistry of paraffin-embedded Human gastric cancer tissue using TA368925 (ARL6IP1 Antibody) at dilution 1/20, treated with fusion protein. (Original magnification: $\times 200$)