

Product datasheet for **TA368924**

ARHI (DIRAS3) Rabbit Polyclonal Antibody

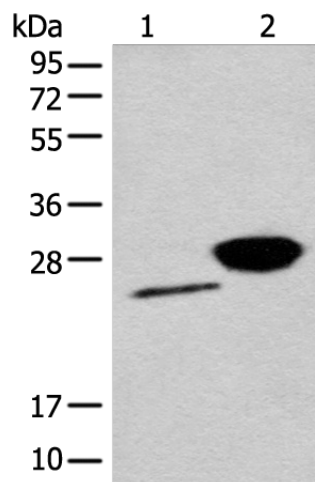
Product data:

Product Type:	Primary Antibodies
Applications:	WB
Recommended Dilution:	WB: 200-1000 WB positive control: Rat brain tissue and Rat liver tissue lysates
Reactivity:	Human, Rat
Host:	Rabbit
Isotype:	IgG
Clonality:	Polyclonal
Immunogen:	Fusion protein of human DIRAS3
Formulation:	pH7.4 PBS, 0.05% NaN ₃ , 40% Glycerol
Concentration:	lot specific
Purification:	Antigen affinity purification
Conjugation:	Unconjugated
Storage:	Store at -20°C.
Stability:	1 year
Predicted Protein Size:	26 kDa
Gene Name:	DIRAS family GTPase 3
Database Link:	Entrez Gene 9077 Human O95661
Background:	This gene encodes a member of the ras superfamily. This gene is imprinted gene with monoallelic expression of the paternal allele which is associated with growth suppression. The encoded protein acts as a tumor suppressor whose function is abrogated in many ovarian and breast cancers. This protein may also play a role autophagy in certain cancer cells by regulating the autophagosome initiation complex.
Synonyms:	ARHI; NOEY2; OTTHUMP00000011138; RHOI



[View online »](#)

Product images:



Gel: 12%SDS-PAGE

Lysate: 40 μ g

Lane 1-2: Rat brain tissue and Rat liver tissue lysates

Primary antibody: TA368924 (DIRAS3 Antibody) at dilution 1/200

Secondary antibody: Goat anti rabbit IgG at 1/8000 dilution

Exposure time: 3 minutes