

Product datasheet for **TA368921S**

ARHGAP25 Rabbit Polyclonal Antibody

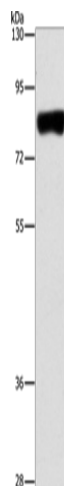
Product data:

Product Type:	Primary Antibodies
Applications:	IHC, WB
Recommended Dilution:	WB: 500-2000 WB positive control: Hela cells IHC: 50-200 Positive control: Human gastric cancer Predicted cell location: Cytoplasm or Nucleus
Reactivity:	Human
Host:	Rabbit
Isotype:	IgG
Clonality:	Polyclonal
Immunogen:	Fusion protein of human ARHGAP25
Formulation:	pH7.4 PBS, 0.05% NaN ₃ , 40% Glycerol
Purification:	Antigen affinity purification
Conjugation:	Unconjugated
Storage:	Store at -20°C.
Stability:	1 year
Predicted Protein Size:	73 kDa
Gene Name:	Rho GTPase activating protein 25
Database Link:	Entrez Gene 9938 Human P42331
Background:	Rho GTPase activating protein 25 is a protein that in humans is encoded by the ARHGAP25 gene. The gene is also known as KIAA0053. ARHGAP25 belongs to a family of Rho GTPase-modulating proteins which are implicated in actin remodeling, cell polarity, and cell migration. GTPase activator for the Rho-type GTPases by converting them to an inactive GDP-bound state.
Synonyms:	KAIA0053; KIAA0053

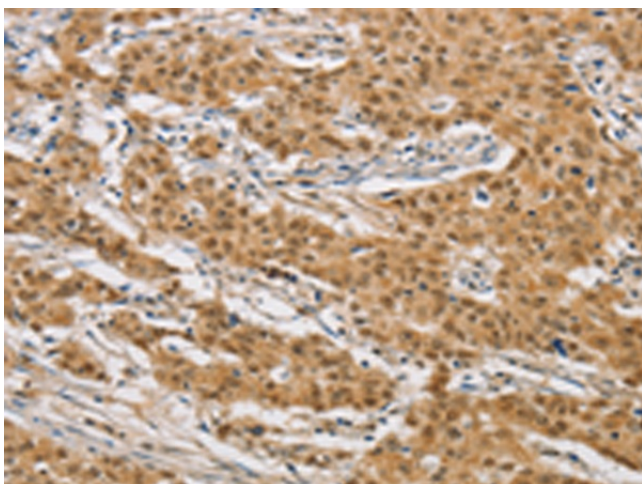


[View online »](#)

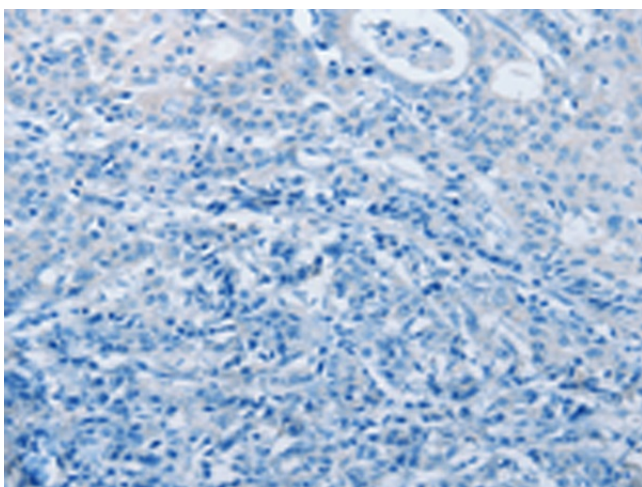
Product images:



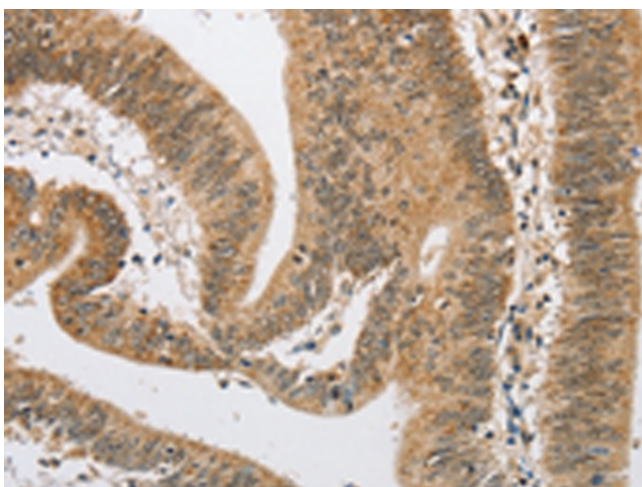
Gel: 8%SDS-PAGE
Lysate: 40 μ g
Lane: HeLa cells
Primary antibody: [TA368921] (ARHGAP25 Antibody) at dilution 1/500
Secondary antibody: Goat anti rabbit IgG at 1/8000 dilution
Exposure time: 3 minutes



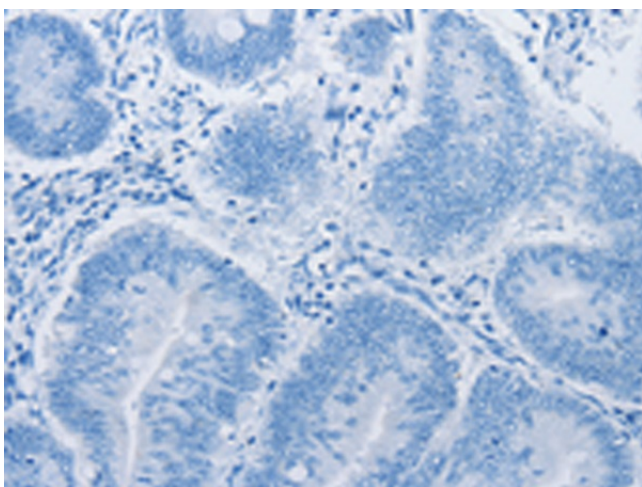
Immunohistochemistry of paraffin-embedded Human gastric cancer tissue using [TA368921] (ARHGAP25 Antibody) at dilution 1/40 (Original magnification: \times 200)



Immunohistochemistry of paraffin-embedded Human gastric cancer tissue using [TA368921] (ARHGAP25 Antibody) at dilution 1/40, treated with fusion protein. (Original magnification: $\times 200$)



Immunohistochemistry of paraffin-embedded Human colon cancer tissue using [TA368921] (ARHGAP25 Antibody) at dilution 1/40 (Original magnification: $\times 200$)



Immunohistochemistry of paraffin-embedded Human colon cancer tissue using [TA368921] (ARHGAP25 Antibody) at dilution 1/40, treated with fusion protein. (Original magnification: $\times 200$)