

Product datasheet for **TA368912S**

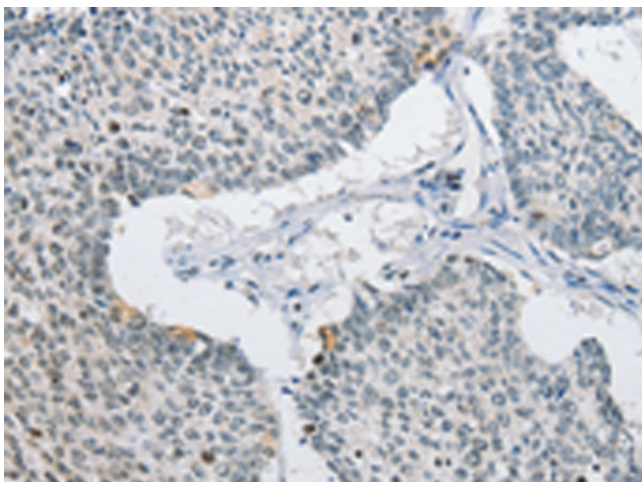
AP2M1 Rabbit Polyclonal Antibody

Product data:

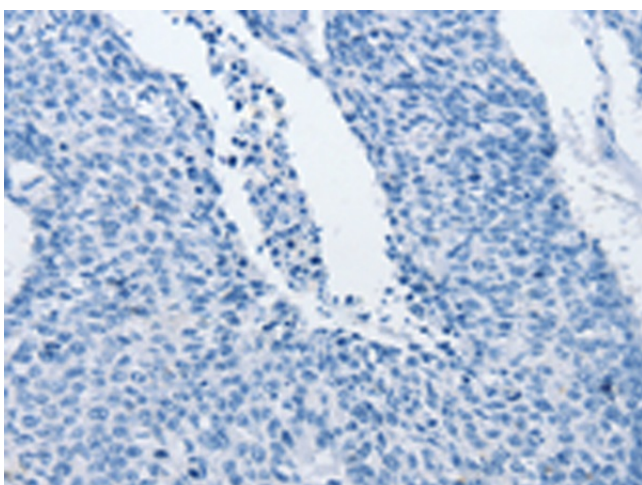
| | |
|-----------------------|--|
| Product Type: | Primary Antibodies |
| Applications: | IHC |
| Recommended Dilution: | IHC: 15-50 Positive control: Human lung cancer Predicted cell location: Cytoplasm or Nucleus |
| Reactivity: | Human, Mouse, Rat |
| Host: | Rabbit |
| Isotype: | IgG |
| Clonality: | Polyclonal |
| Immunogen: | Fusion protein of human AP2M1 |
| Formulation: | pH7.4 PBS, 0.05% NaN ₃ , 40% Glycerol |
| Purification: | Antigen affinity purification |
| Conjugation: | Unconjugated |
| Storage: | Store at -20°C. |
| Stability: | 1 year |
| Gene Name: | adaptor related protein complex 2 mu 1 subunit |
| Database Link: | Entrez Gene 1173 Human Q96CW1 |
| Background: | This gene encodes a subunit of the heterotetrameric coat assembly protein complex 2 (AP2), which belongs to the adaptor complexes medium subunits family. The encoded protein is required for the activity of a vacuolar ATPase, which is responsible for proton pumping occurring in the acidification of endosomes and lysosomes. The encoded protein may also play an important role in regulating the intracellular trafficking and function of CTLA-4 protein. Two transcript variants encoding different isoforms have been found for this gene. |
| Synonyms: | Adaptin-mu2; AP50; CLAPM1; KIAA0109; mu2; OTTHUMP00000210697 |



[View online »](#)

Product images:

Immunohistochemistry of paraffin-embedded Human lung cancer tissue using [TA368912] (AP2M1 Antibody) at dilution 1/15 (Original magnification: $\times 200$)



Immunohistochemistry of paraffin-embedded Human lung cancer tissue using [TA368912] (AP2M1 Antibody) at dilution 1/15, treated with fusion protein. (Original magnification: $\times 200$)