

## Product datasheet for **TA368906S**

### AGFG1 Rabbit Polyclonal Antibody

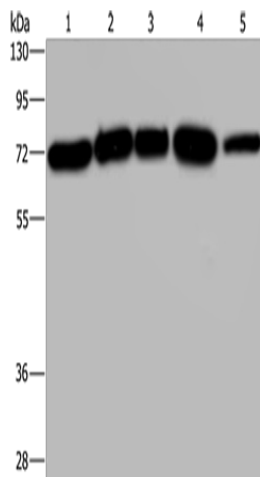
#### Product data:

Product Type:	Primary Antibodies
Applications:	IHC, WB
Recommended Dilution:	WB: 500-2000 WB positive control: A172, Hela and 293T cells, K562 cells and human testis tissue IHC: 50-200 Positive control: Human breast cancer Predicted cell location: Cytoplasm
Reactivity:	Human, Mouse, Rat
Host:	Rabbit
Isotype:	IgG
Clonality:	Polyclonal
Immunogen:	Fusion protein of human AGFG1
Formulation:	pH7.4 PBS, 0.05% NaN <sub>3</sub> , 40% Glycerol
Purification:	Antigen affinity purification
Conjugation:	Unconjugated
Storage:	Store at -20°C.
Stability:	1 year
Predicted Protein Size:	58 kDa
Gene Name:	ArfGAP with FG repeats 1
Database Link:	<a href="#">Entrez Gene 3267 Human P52594</a>
Background:	The protein encoded by this gene is related to nucleoporins, a class of proteins that mediate nucleocytoplasmic transport. The encoded protein binds the activation domain of the human immunodeficiency virus Rev protein when Rev is assembled onto its RNA target, and is required for the nuclear export of Rev-directed RNAs. Multiple transcript variants encoding different isoforms have been found for this gene.
Synonyms:	DKFZp686I15205; HRB; MGC116938; MGC116940; OTTHUMP00000204062; RAB; RIP

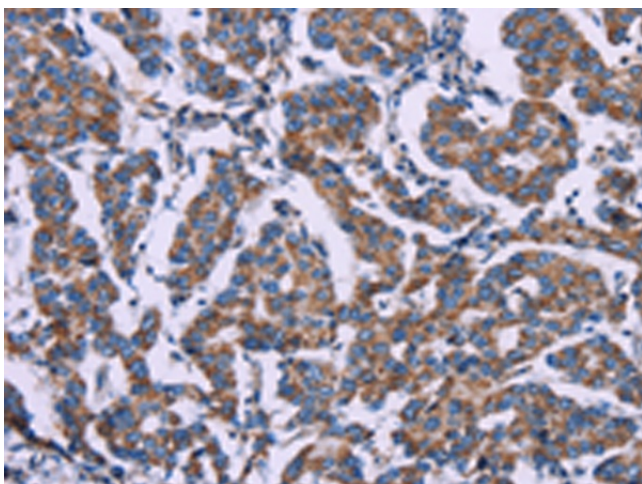


[View online »](#)

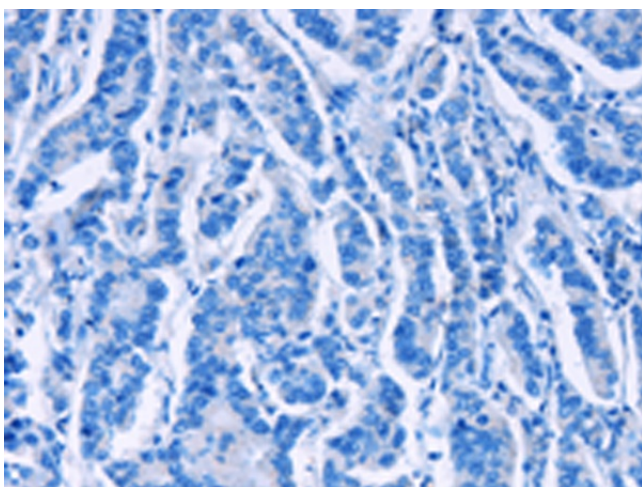
## Product images:



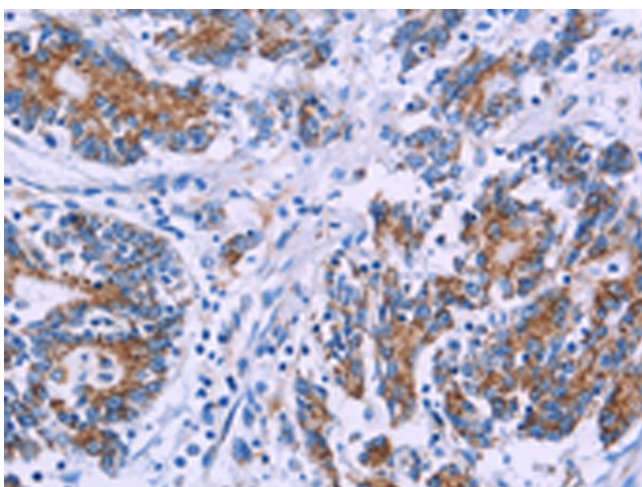
Gel: 8%SDS-PAGE  
Lysate: 40  $\mu$ g  
Lane 1-5: A172 cells  
Hela cells  
293T cells  
K562 cells  
human testis tissue  
Primary antibody: [TA368906] (AGFG1 Antibody)  
at dilution 1/533  
Secondary antibody: Goat anti rabbit IgG at  
1/8000 dilution  
Exposure time: 40 seconds



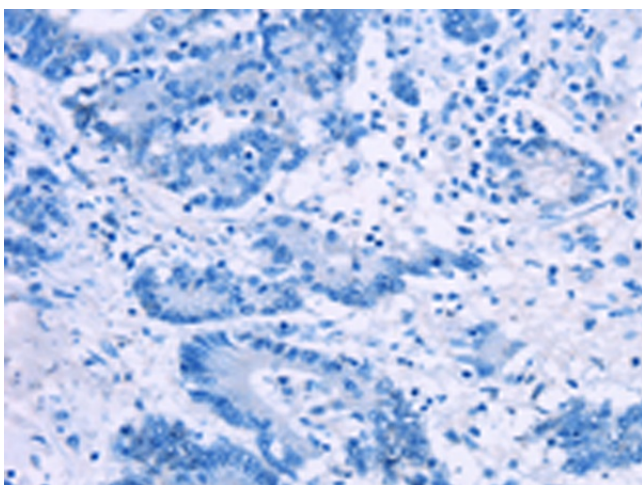
Immunohistochemistry of paraffin-embedded  
Human breast cancer tissue using [TA368906]  
(AGFG1 Antibody) at dilution 1/50 (Original  
magnification:  $\times$ 200)



Immunohistochemistry of paraffin-embedded Human breast cancer tissue using [TA368906] (AGFG1 Antibody) at dilution 1/50, treated with fusion protein. (Original magnification: ×200)



Immunohistochemistry of paraffin-embedded Human colon cancer tissue using [TA368906] (AGFG1 Antibody) at dilution 1/50 (Original magnification: ×200)



Immunohistochemistry of paraffin-embedded Human colon cancer tissue using [TA368906] (AGFG1 Antibody) at dilution 1/50, treated with fusion protein. (Original magnification: ×200)