

## Product datasheet for **TA368905S**

### AF9 (MLLT3) Rabbit Polyclonal Antibody

#### Product data:

Product Type:	Primary Antibodies
Applications:	IHC
Recommended Dilution:	IHC: 150-300 Positive control: Human gastric cancer Predicted cell location: Nucleus
Reactivity:	Human, Mouse
Host:	Rabbit
Isotype:	IgG
Clonality:	Polyclonal
Immunogen:	Fusion protein of human MLLT3
Formulation:	pH7.4 PBS, 0.05% NaN <sub>3</sub> , 40% Glycerol
Purification:	Antigen affinity purification
Conjugation:	Unconjugated
Storage:	Store at -20°C.
Stability:	1 year
Gene Name:	myeloid/lymphoid or mixed-lineage leukemia; translocated to, 3
Database Link:	<a href="#">Entrez Gene 4300 Human P42568</a>



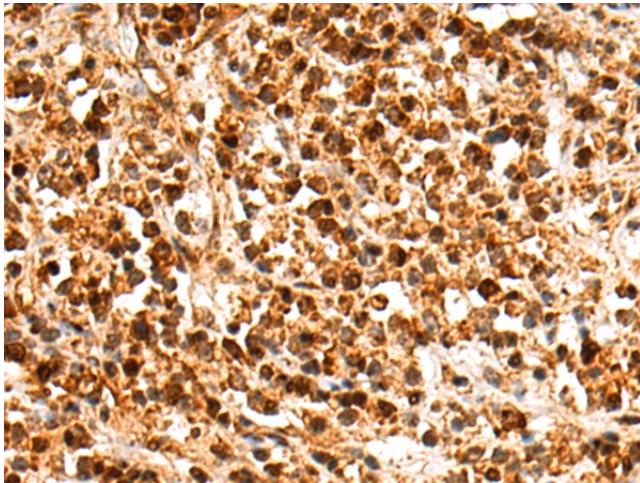
[View online »](#)

**Background:**

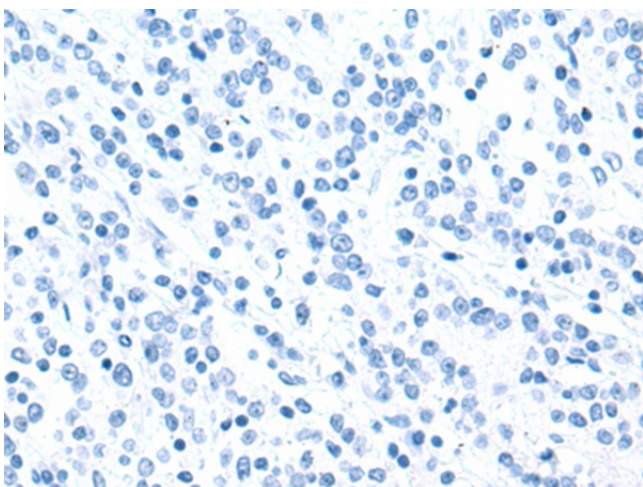
Chromatin reader component of the super elongation complex (SEC), a complex required to increase the catalytic rate of RNA polymerase II transcription by suppressing transient pausing by the polymerase at multiple sites along the DNA (PubMed:20159561, PubMed:20471948, PubMed:25417107, PubMed:27105114, PubMed:27545619). Specifically recognizes and binds acylated histone H3, with a marked preference for histone H3 that is crotonylated (PubMed:25417107, PubMed:27105114, PubMed:27545619). Crotonylation marks active promoters and enhancers and confers resistance to transcriptional repressors (PubMed:25417107, PubMed:27105114, PubMed:27545619). Recognizes and binds histone H3 crotonylated at 'Lys-9' (H3K9cr), and with slightly lower affinity histone H3 crotonylated at 'Lys-18' (H3K18cr) (PubMed:27105114). Also recognizes and binds histone H3 acetylated at 'Lys-9' (H3K9ac), but with lower affinity than crotonylated histone H3 (PubMed:25417107, PubMed:27105114). In the SEC complex, MLLT3 is required to recruit the complex to crotonylated histones (PubMed:27105114, PubMed:27545619).

**Synonyms:**

AF-9; AF9; FLJ2035; YEATS3

**Product images:**

Immunohistochemistry of paraffin-embedded Human gastric cancer tissue using [TA368905] (MLLT3 Antibody) at dilution 1/155 (Original magnification: ×200)



Immunohistochemistry of paraffin-embedded Human gastric cancer tissue using [TA368905] (MLLT3 Antibody) at dilution 1/155, treated with fusion protein. (Original magnification: ×200)