

## Product datasheet for **TA368897S**

### Meckelin (TMEM67) Rabbit Polyclonal Antibody

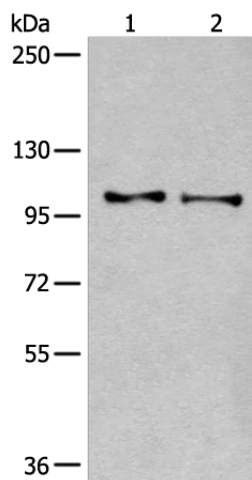
#### Product data:

Product Type:	Primary Antibodies
Applications:	IHC, WB
Recommended Dilution:	WB: 200-1000 WB positive control: Human kidney tissue and A549 cell lysates IHC: 20-100 Positive control: Human liver cancer Predicted cell location: Cytoplasm and Cell membrane
Reactivity:	Human, Mouse, Rat
Host:	Rabbit
Isotype:	IgG
Clonality:	Polyclonal
Immunogen:	Fusion protein of human TMEM67
Formulation:	pH7.4 PBS, 0.05% NaN <sub>3</sub> , 40% Glycerol
Purification:	Antigen affinity purification
Conjugation:	Unconjugated
Storage:	Store at -20°C.
Stability:	1 year
Predicted Protein Size:	112 kDa
Gene Name:	transmembrane protein 67
Database Link:	<a href="#">Entrez Gene 91147 Human Q5HYA8</a>
Background:	The protein encoded by this gene localizes to the primary cilium and to the plasma membrane. The gene functions in centriole migration to the apical membrane and formation of the primary cilium. Multiple transcript variants encoding different isoforms have been found for this gene. Defects in this gene are a cause of Meckel syndrome type 3 (MKS3) and Joubert syndrome type 6 (JBTS6).
Synonyms:	JBTS6; meckelin; MGC26979; MKS3; TNEM67

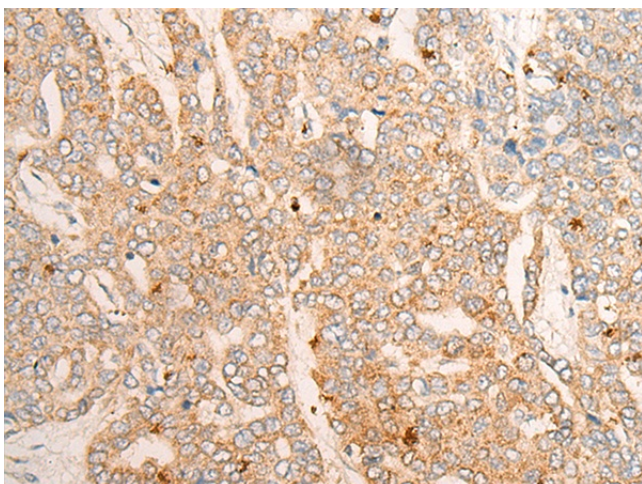


[View online »](#)

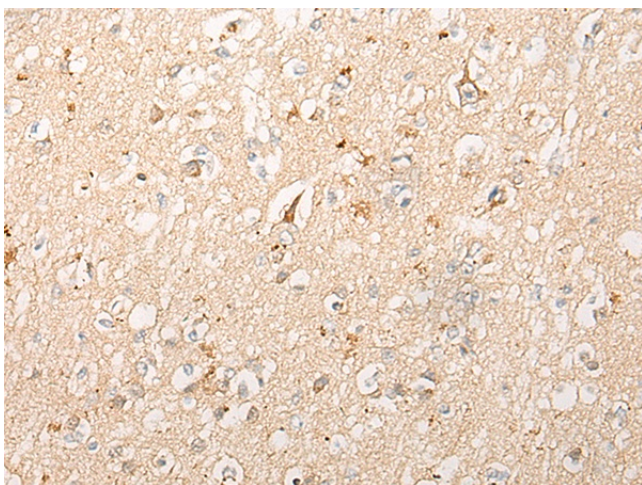
## Product images:



Gel: 6%SDS-PAGE  
Lysate: 40  $\mu$ g  
Lane 1-2: Human kidney tissue and A549 cell lysates  
Primary antibody: [TA368897] (TMEM67 Antibody) at dilution 1/200  
Secondary antibody: Goat anti rabbit IgG at 1/8000 dilution  
Exposure time: 10 minutes



Immunohistochemistry of paraffin-embedded Human liver cancer tissue using [TA368897] (TMEM67 Antibody) at dilution 1/20. (Original magnification:  $\times$ 200)



Immunohistochemistry of paraffin-embedded Human brain tissue using [TA368897] (TMEM67 Antibody) at dilution 1/20. (Original magnification:  $\times$ 200)