

## Product datasheet for **TA368887S**

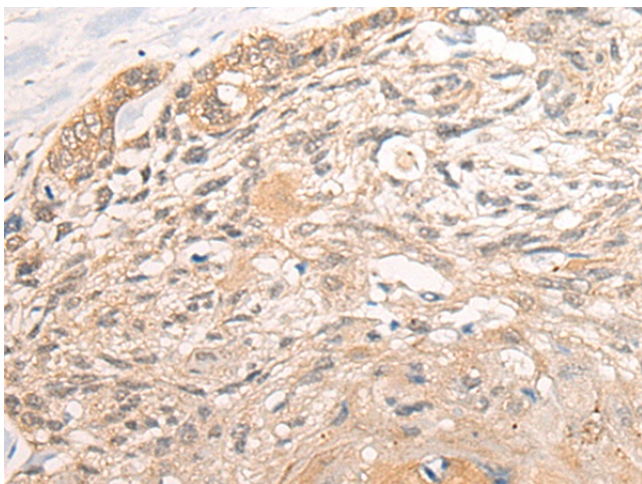
### **TRA16 (NR2C2AP) Rabbit Polyclonal Antibody**

#### **Product data:**

Product Type:	Primary Antibodies
Applications:	IHC
Recommended Dilution:	IHC: 25-100 Positive control: Human esophagus cancer Predicted cell location: Nucleus
Reactivity:	Human, Mouse
Host:	Rabbit
Isotype:	IgG
Clonality:	Polyclonal
Immunogen:	Full length fusion protein
Formulation:	pH7.4 PBS, 0.05% NaN <sub>3</sub> , 40% Glycerol
Purification:	Antigen affinity purification
Conjugation:	Unconjugated
Storage:	Store at -20°C.
Stability:	1 year
Gene Name:	nuclear receptor 2C2 associated protein
Database Link:	<a href="#">Entrez Gene 126382 Human Q86WQ0</a>
Background:	May act as a repressor of NR2C2-mediated transactivation by suppressing the binding between NR2C2/TR4 and the TR4-response element in target genes.
Synonyms:	TRA16



[View online »](#)

**Product images:**

Immunohistochemistry of paraffin-embedded Human esophagus cancer tissue using [TA368887] (NR2C2AP Antibody) at dilution 1/25. (Original magnification: ×200)