

Product datasheet for **TA368873S**

Prostaglandin D Synthase (PTGDS) Rabbit Polyclonal Antibody

Product data:

Product Type:	Primary Antibodies
Applications:	IHC, WB
Recommended Dilution:	WB: 1000-5000 WB positive control: Mouse eye tissue lysate IHC: 100-300 Positive control: Human colorectal cancer Predicted cell location: Cytoplasm
Reactivity:	Human, Mouse
Host:	Rabbit
Isotype:	IgG
Clonality:	Polyclonal
Immunogen:	Fusion protein of human PTGDS
Formulation:	pH7.4 PBS, 0.05% NaN ₃ , 40% Glycerol
Purification:	Antigen affinity purification
Conjugation:	Unconjugated
Storage:	Store at -20°C.
Stability:	1 year
Predicted Protein Size:	21 kDa
Gene Name:	prostaglandin D2 synthase
Database Link:	Entrez Gene 5730 Human P41222

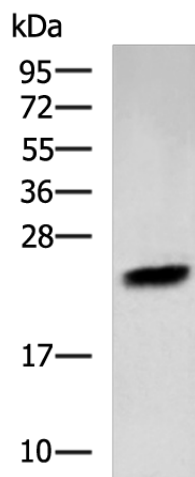
Background: The protein encoded by this gene is a glutathione-independent prostaglandin D synthase that catalyzes the conversion of prostaglandin H₂ (PGH₂) to prostaglandin D₂ (PGD₂). PGD₂ functions as a neuromodulator as well as a trophic factor in the central nervous system. PGD₂ is also involved in smooth muscle contraction/relaxation and is a potent inhibitor of platelet aggregation. This gene is preferentially expressed in brain. Studies with transgenic mice overexpressing this gene suggest that this gene may be also involved in the regulation of non-rapid eye movement sleep.



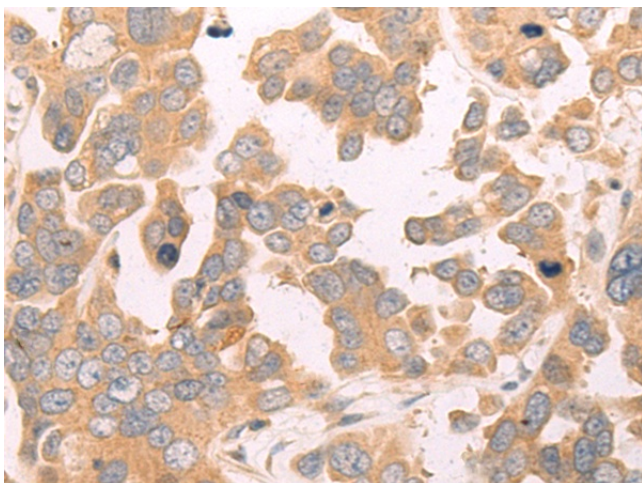
[View online »](#)

Synonyms: Cerebrin-28; L-PGDS; LPGDS; PDS; PGD2; PGDS; PGDS2

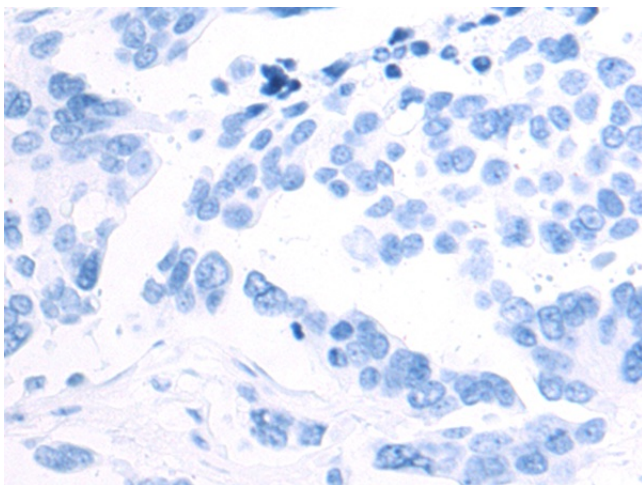
Product images:



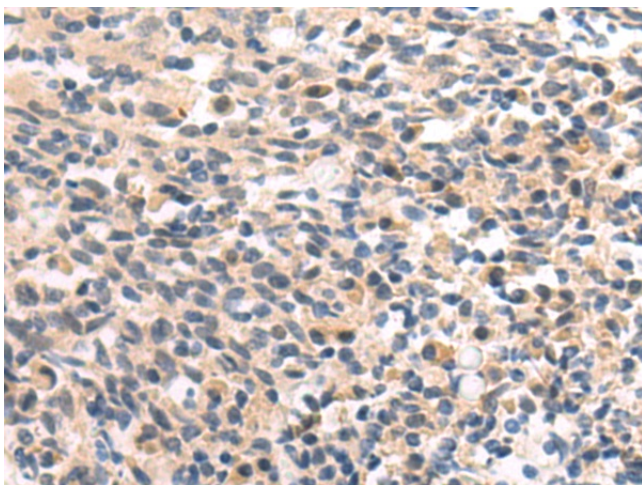
Gel: 12%SDS-PAGE
Lysate: 40 μ g
Lane: Mouse eye tissue lysate
Primary antibody: [TA368873] (PTGDS Antibody) at dilution 1/1300
Secondary antibody: Goat anti rabbit IgG at 1/5000 dilution
Exposure time: 1 minute



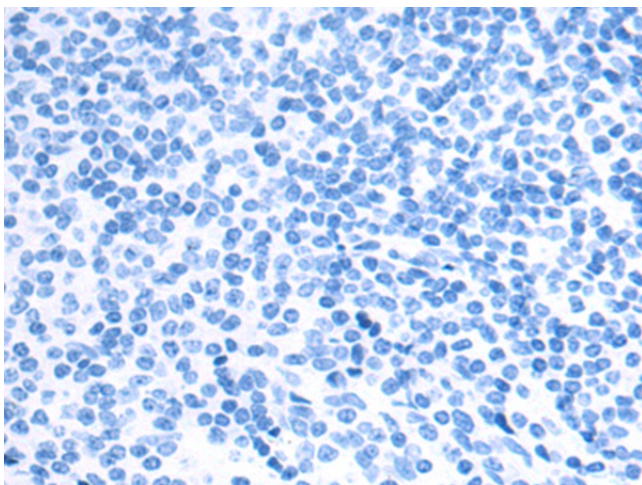
Immunohistochemistry of paraffin-embedded Human colorectal cancer tissue using [TA368873] (PTGDS Antibody) at dilution 1/120 (Original magnification: \times 200)



Immunohistochemistry of paraffin-embedded Human colorectal cancer tissue using [TA368873] (PTGDS Antibody) at dilution 1/120, treated with fusion protein. (Original magnification: $\times 200$)



Immunohistochemistry of paraffin-embedded Human tonsil tissue using [TA368873] (PTGDS Antibody) at dilution 1/120 (Original magnification: $\times 200$)



Immunohistochemistry of paraffin-embedded Human tonsil tissue using [TA368873] (PTGDS Antibody) at dilution 1/120, treated with fusion protein. (Original magnification: $\times 200$)