

## Product datasheet for **TA368870**

### SPDEF Rabbit Polyclonal Antibody

#### Product data:

Product Type:	Primary Antibodies
Applications:	IHC, WB
Recommended Dilution:	WB: 1000-5000 WB positive control: Human cerebella tissue, Human cerebrum tissue, Mouse brain tissue lysates IHC: 50-100 Positive control: Human liver cancer Predicted cell location: Nucleus
Reactivity:	Human, Mouse
Host:	Rabbit
Isotype:	IgG
Clonality:	Polyclonal
Immunogen:	Fusion protein of human SPDEF
Formulation:	pH7.4 PBS, 0.05% NaN <sub>3</sub> , 40% Glycerol
Concentration:	lot specific
Purification:	Antigen affinity purification
Conjugation:	Unconjugated
Storage:	Store at -20°C.
Stability:	1 year
Predicted Protein Size:	37 kDa
Gene Name:	SAM pointed domain containing ETS transcription factor
Database Link:	<a href="#">Entrez Gene 25803 Human O95238</a>



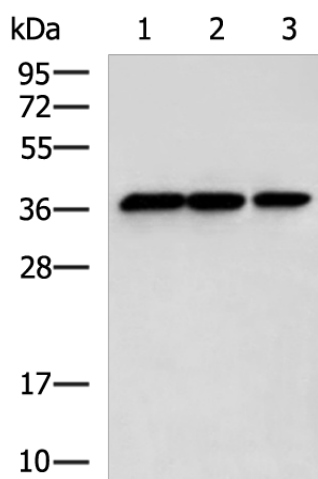
[View online »](#)

**Background:**

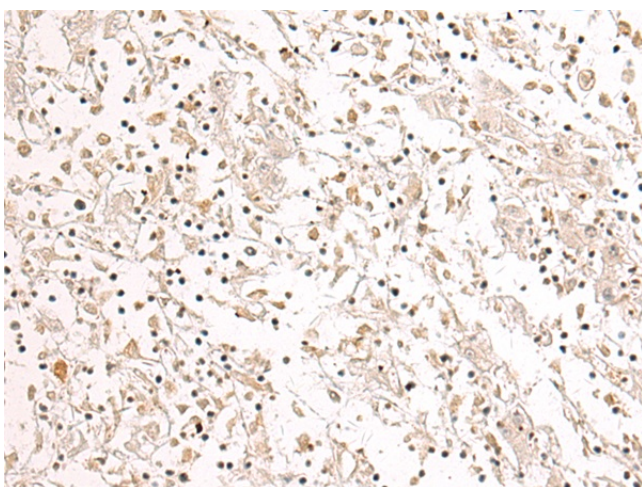
The protein encoded by this gene belongs to the ETS family of transcription factors. It is highly expressed in the prostate epithelial cells, and functions as an androgen-independent transactivator of prostate-specific antigen (PSA) promoter. Higher expression of this protein has also been reported in brain, breast, lung and ovarian tumors, compared to the corresponding normal tissues, and it shows better tumor-association than other cancer-associated molecules, making it a more suitable target for developing specific cancer therapies. Alternatively spliced transcript variants encoding different isoforms have been found for this gene.

**Synonyms:**

bA375E1.3; PDEF; PSE; RP11-375E1\_A.3

**Product images:**

Gel: 12%SDS-PAGE  
Lysate: 40 µg  
Lane 1-3: Human cerebella tissue  
Human cerebrum tissue  
Mouse brain tissue lysates  
Primary antibody: TA368870 (SPDEF Antibody) at dilution 1/600  
Secondary antibody: Goat anti rabbit IgG at 1/5000 dilution  
Exposure time: 10 seconds



Immunohistochemistry of paraffin-embedded Human liver cancer tissue using TA368870 (SPDEF Antibody) at dilution 1/75. (Original magnification: ×200)