

Product datasheet for **TA368869S**

PDE4D Rabbit Polyclonal Antibody

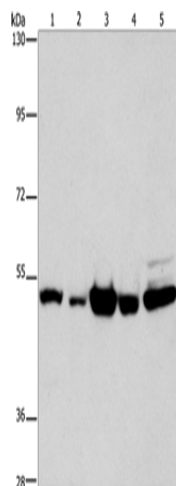
Product data:

Product Type:	Primary Antibodies
Applications:	IHC, WB
Recommended Dilution:	WB: 500-2000 WB positive control: Human bladder carcinoma and brain malignant glioma tissue, A172 cells, human fetal brain tissue and hela cells IHC: 25-100 Positive control: Human gastric cancer Predicted cell location: Cytoplasm
Reactivity:	Human
Host:	Rabbit
Isotype:	IgG
Clonality:	Polyclonal
Immunogen:	Fusion protein of human PDE4D
Formulation:	pH7.4 PBS, 0.05% NaN ₃ , 40% Glycerol
Purification:	Antigen affinity purification
Conjugation:	Unconjugated
Storage:	Store at -20°C.
Stability:	1 year
Predicted Protein Size:	91 kDa
Gene Name:	phosphodiesterase 4D
Database Link:	Entrez Gene 5144 Human Q08499
Background:	This gene encodes one of four mammalian counterparts to the fruit fly 'dunce' gene. The encoded protein has 3',5'-cyclic-AMP phosphodiesterase activity and degrades cAMP, which acts as a signal transduction molecule in multiple cell types. This gene uses different promoters to generate multiple alternatively spliced transcript variants that encode functional proteins.
Synonyms:	DKFZp686M11213; DPDE3; FLJ97311; HSPDE4D; PDE4DN2; PDE43; STRK1



[View online »](#)

Product images:



Gel: 8%SDS-PAGE

Lysate: 40 μ g

Lane 1-5: Human bladder carcinoma tissue

Human brain malignant glioma tissue

A172 cells

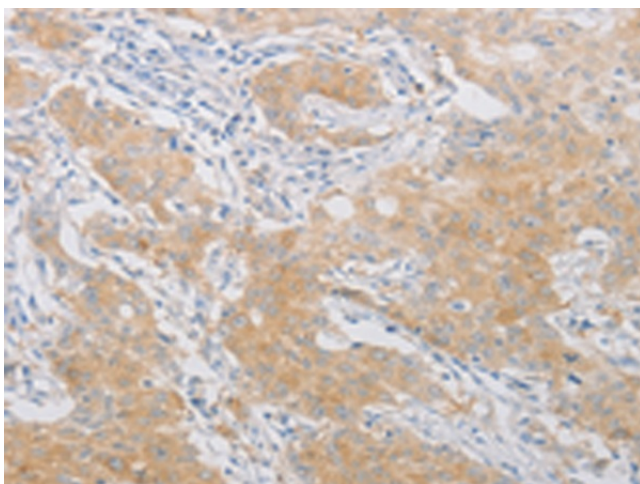
human fetal brain tissue

hela cells

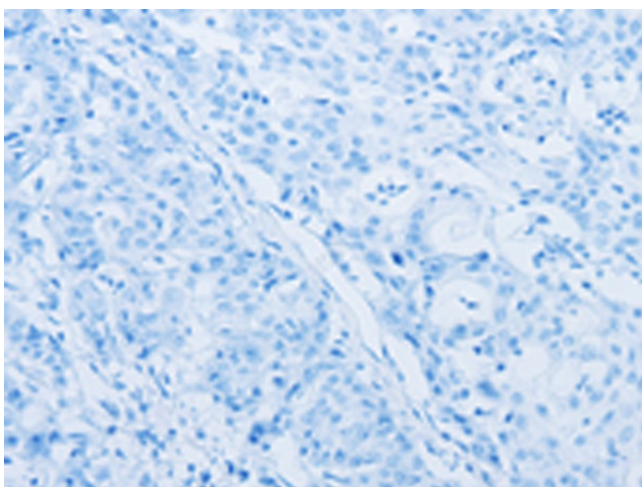
Primary antibody: [TA368869] (PDE4D Antibody)
at dilution 1/450

Secondary antibody: Goat anti rabbit IgG at
1/8000 dilution

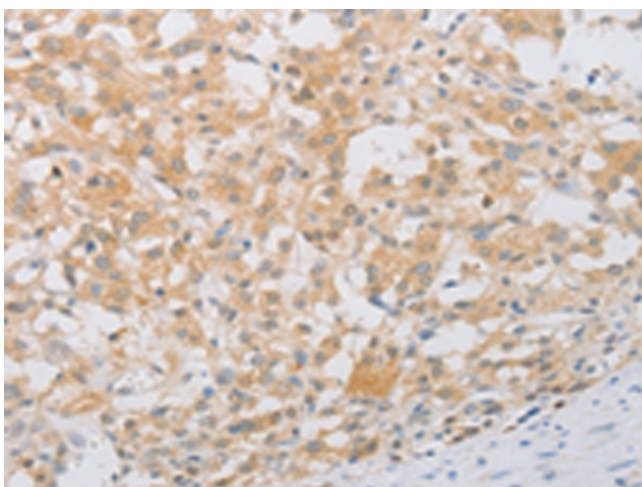
Exposure time: 10 seconds



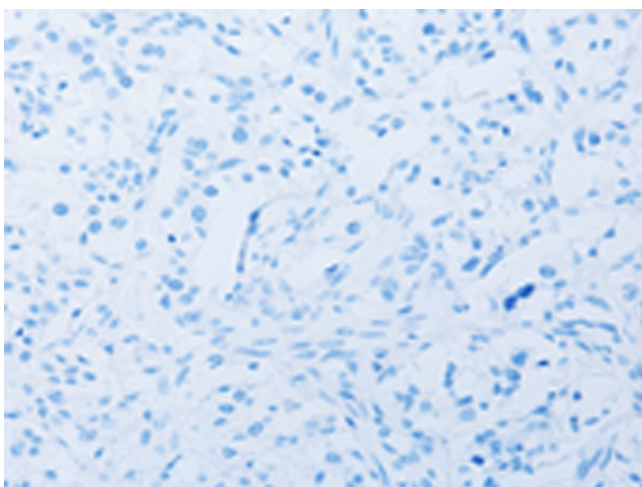
Immunohistochemistry of paraffin-embedded
Human gastric cancer tissue using [TA368869]
(PDE4D Antibody) at dilution 1/20 (Original
magnification: \times 200)



Immunohistochemistry of paraffin-embedded Human gastric cancer tissue using [TA368869] (PDE4D Antibody) at dilution 1/20, treated with fusion protein. (Original magnification: $\times 200$)



Immunohistochemistry of paraffin-embedded Human thyroid cancer tissue using [TA368869] (PDE4D Antibody) at dilution 1/20 (Original magnification: $\times 200$)



Immunohistochemistry of paraffin-embedded Human thyroid cancer tissue using [TA368869] (PDE4D Antibody) at dilution 1/20, treated with fusion protein. (Original magnification: $\times 200$)