

## Product datasheet for **TA368845S**

### MASP1 Rabbit Polyclonal Antibody

#### Product data:

Product Type:	Primary Antibodies
Applications:	IHC, WB
Recommended Dilution:	WB: 500-2000 WB positive control: Human heart tissue and Hela cell lysates IHC: 100-300 Positive control: Human prostate cancer Predicted cell location: Secreted
Reactivity:	Human
Host:	Rabbit
Isotype:	IgG
Clonality:	Polyclonal
Immunogen:	Fusion protein of human MASP1
Formulation:	pH7.4 PBS, 0.05% NaN <sub>3</sub> , 40% Glycerol
Purification:	Antigen affinity purification
Conjugation:	Unconjugated
Storage:	Store at -20°C.
Stability:	1 year
Predicted Protein Size:	79 kDa
Gene Name:	mannan binding lectin serine peptidase 1
Database Link:	<a href="#">Entrez Gene 5648 Human P48740</a>



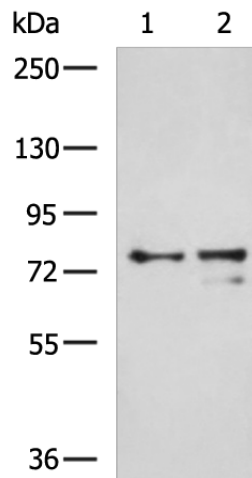
[View online »](#)

**Background:**

This gene encodes a serine protease that functions as a component of the lectin pathway of complement activation. The complement pathway plays an essential role in the innate and adaptive immune response. The encoded protein is synthesized as a zymogen and is activated when it complexes with the pathogen recognition molecules of lectin pathway, the mannose-binding lectin and the ficolins. This protein is not directly involved in complement activation but may play a role as an amplifier of complement activation by cleaving complement C2 or by activating another complement serine protease, MASP-2. The encoded protein is also able to cleave fibrinogen and factor XIII and may be involved in coagulation. A splice variant of this gene which lacks the serine protease domain functions as an inhibitor of the complement pathway. Alternate splicing results in multiple transcript variants.

**Synonyms:**

CRARF; CRARF1; DKFZp686I01199; FLJ26383; MASP; MASP-1; MGC126283; MGC126284; PRSS5; RaRF

**Product images:**

Gel: 6%SDS-PAGE

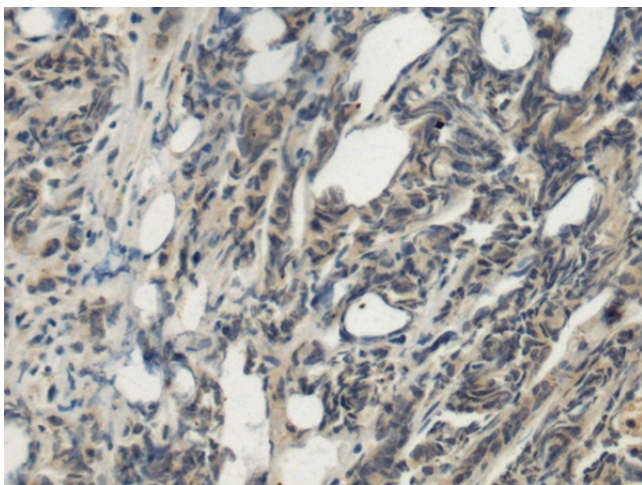
Lysate: 40 µg

Lane 1-2: Human heart tissue and HeLa cell lysates

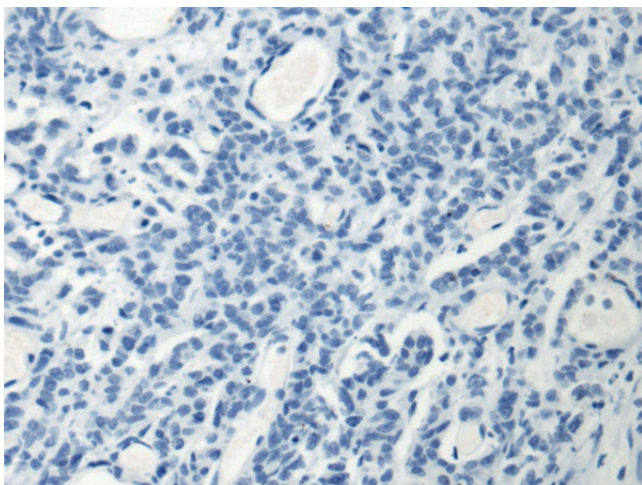
Primary antibody: [TA368845] (MASP1 Antibody) at dilution 1/1000

Secondary antibody: Goat anti rabbit IgG at 1/5000 dilution

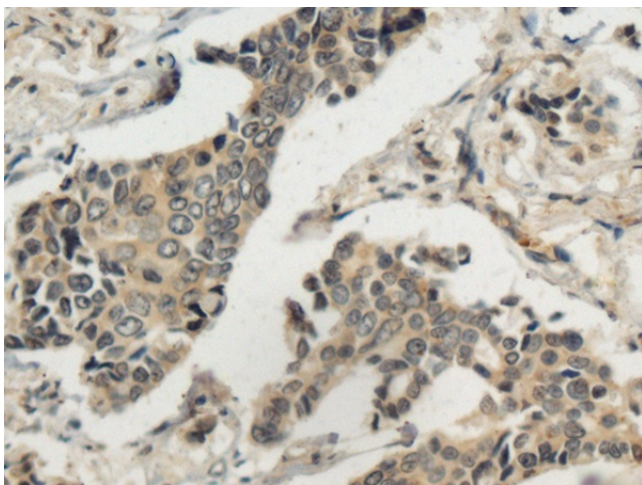
Exposure time: 2 minutes



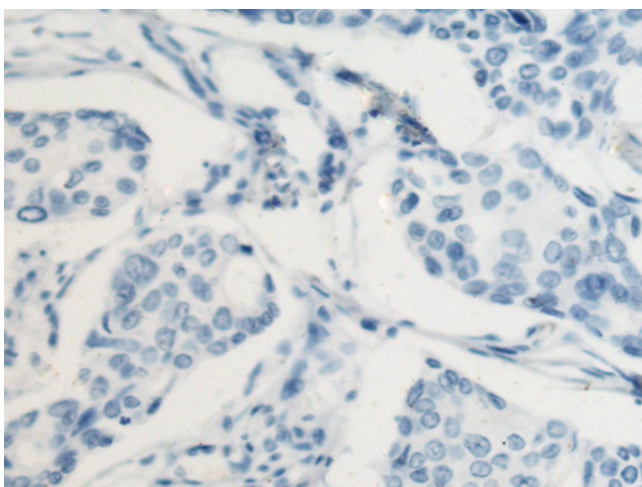
Immunohistochemistry of paraffin-embedded Human prostate cancer tissue using [TA368845] (MASP1 Antibody) at dilution 1/140 (Original magnification: x200)



Immunohistochemistry of paraffin-embedded Human prostate cancer tissue using [TA368845] (MASP1 Antibody) at dilution 1/140, treated with fusion protein. (Original magnification: x200)



Immunohistochemistry of paraffin-embedded Human breast cancer tissue using [TA368845] (MASP1 Antibody) at dilution 1/140 (Original magnification: x200)



Immunohistochemistry of paraffin-embedded Human breast cancer tissue using [TA368845] (MASP1 Antibody) at dilution 1/140, treated with fusion protein. (Original magnification: ×200)