

## Product datasheet for **TA368830**

### Integrin beta 1 (ITGB1) Rabbit Polyclonal Antibody

#### Product data:

Product Type:	Primary Antibodies
Applications:	IHC, WB
Recommended Dilution:	WB: 500-2000 WB positive control: Human stomach tissue, Human gastric carcinoma tissue, 823 cell, Human leiomyosarcoma tissue, A172 cell, HUVEC cell, Human gastric carcinoma and surrounding tissue lysates IHC: 50-200 Positive control: Human liver cancer Predicted cell location: Cytoplasm
Reactivity:	Human, Mouse, Rat
Host:	Rabbit
Isotype:	IgG
Clonality:	Polyclonal
Immunogen:	Fusion protein of human ITGB1
Formulation:	pH7.4 PBS, 0.05% NaN <sub>3</sub> , 40% Glycerol
Concentration:	lot specific
Purification:	Antigen affinity purification
Conjugation:	Unconjugated
Storage:	Store at -20°C.
Stability:	1 year
Predicted Protein Size:	88 kDa
Gene Name:	integrin subunit beta 1
Database Link:	<a href="#">Entrez Gene 3688 Human P05556</a>



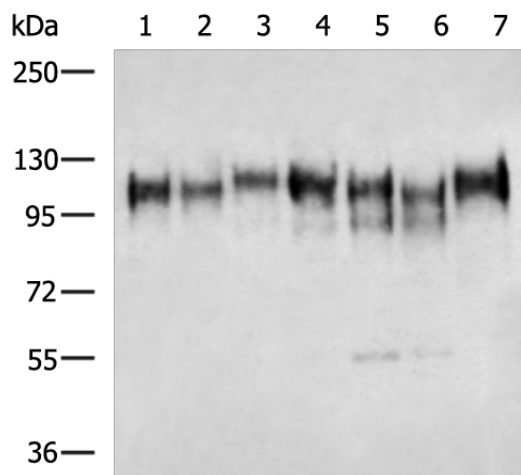
[View online »](#)

**Background:**

Integrins are heterodimeric proteins made up of alpha and beta subunits. At least 18 alpha and 8 beta subunits have been described in mammals. Integrin family members are membrane receptors involved in cell adhesion and recognition in a variety of processes including embryogenesis, hemostasis, tissue repair, immune response and metastatic diffusion of tumor cells. This gene encodes a beta subunit. Multiple alternatively spliced transcript variants which encode different protein isoforms have been found for this gene.

**Synonyms:**

CD29; FNRB; GPIIA; MDF2; MSK12; VLA-BETA; VLAB

**Product images:**


Gel: 6%SDS-PAGE

Lysate: 40 µg

Lane 1-7: Human stomach tissue

Human gastric carcinoma tissue

823 cell

Human leiomyosarcoma tissue

A172 cell

HUVEC cell

Human gastric carcinoma and surrounding tissue

lysates

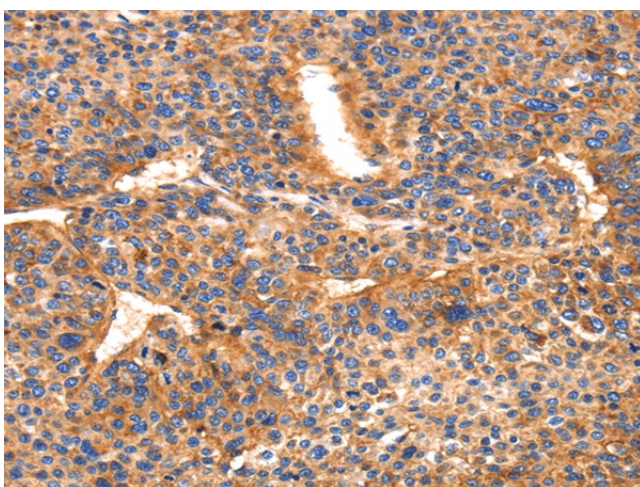
Primary antibody: TA368830 (ITGB1 Antibody) at

dilution 1/100

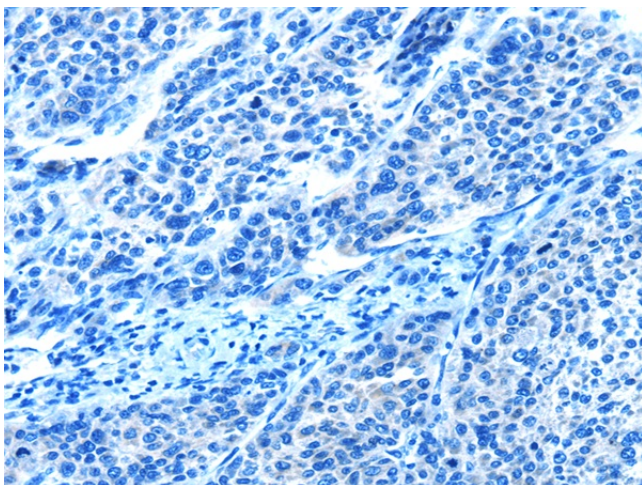
Secondary antibody: Goat anti rabbit IgG at

1/5000 dilution

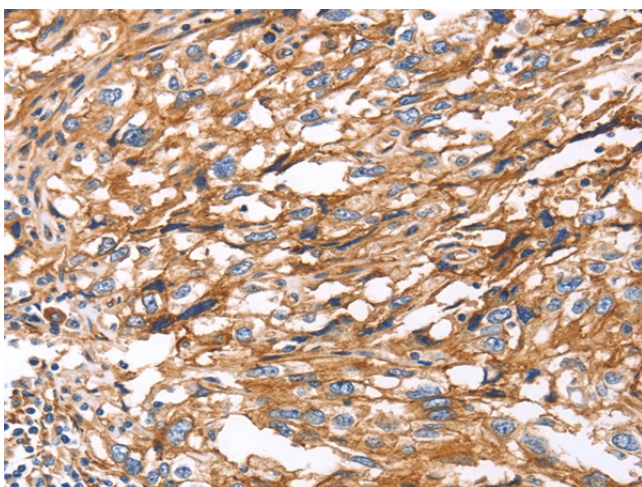
Exposure time: 5 seconds



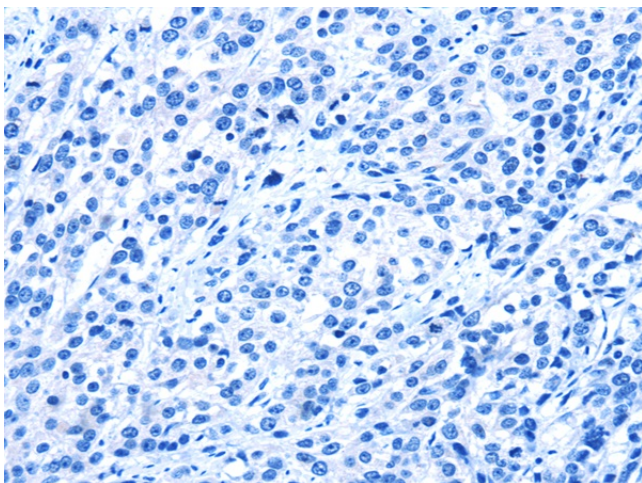
Immunohistochemistry of paraffin-embedded Human liver cancer tissue using TA368830 (ITGB1 Antibody) at dilution 1/50 (Original magnification: ×200)



Immunohistochemistry of paraffin-embedded Human liver cancer tissue using TA368830 (ITGB1 Antibody) at dilution 1/50, treated with fusion protein. (Original magnification: x200)



Immunohistochemistry of paraffin-embedded Human esophagus cancer tissue using TA368830 (ITGB1 Antibody) at dilution 1/50 (Original magnification: x200)



Immunohistochemistry of paraffin-embedded Human esophagus cancer tissue using TA368830 (ITGB1 Antibody) at dilution 1/50, treated with fusion protein. (Original magnification: x200)