

Product datasheet for **TA368816**

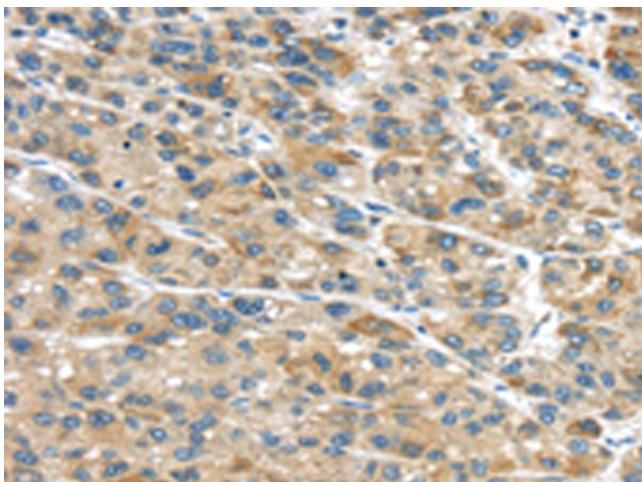
GLP2R Rabbit Polyclonal Antibody

Product data:

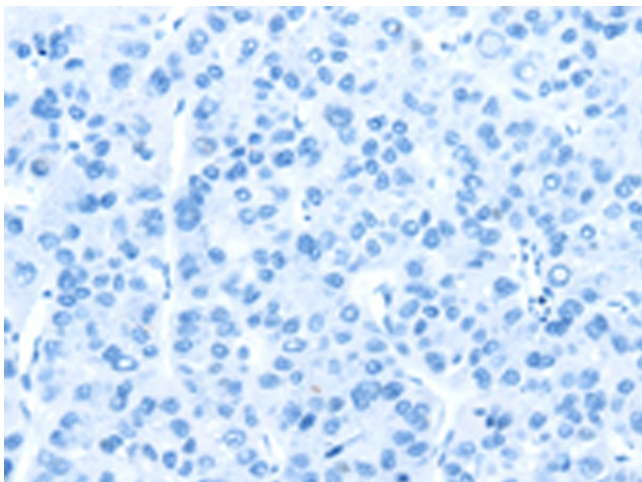
Product Type:	Primary Antibodies
Applications:	IHC
Recommended Dilution:	IHC: 25-100 Positive control: Human liver cancer Predicted cell location: Cytoplasm or Cell membrane
Reactivity:	Human
Host:	Rabbit
Isotype:	IgG
Clonality:	Polyclonal
Immunogen:	Fusion protein of human GLP2R
Formulation:	pH7.4 PBS, 0.05% NaN ₃ , 40% Glycerol
Concentration:	lot specific
Purification:	Antigen affinity purification
Conjugation:	Unconjugated
Storage:	Store at -20°C.
Stability:	1 year
Gene Name:	glucagon like peptide 2 receptor
Database Link:	Entrez Gene 9340 Human O95838
Background:	This gene encodes a G protein-coupled receptor that is closely related to the glucagon receptor and binds to glucagon-like peptide-2 (GLP2). Signalling through GLP2 stimulates intestinal growth and increases villus height in the small intestine, concomitant with increased crypt cell proliferation and decreased enterocyte apoptosis.
Synonyms:	GLP-2-R; GLP-2R



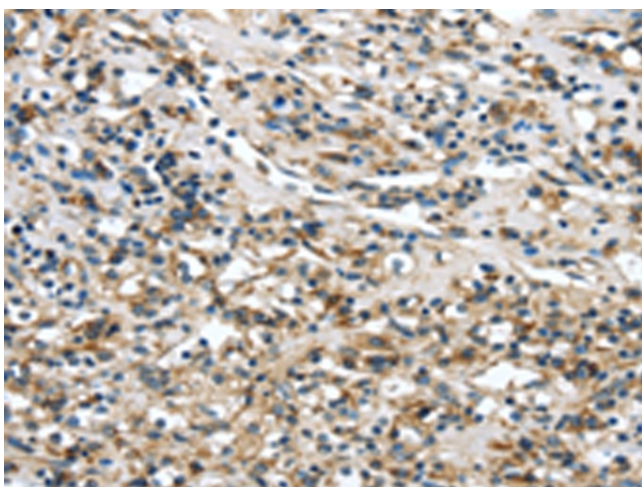
[View online »](#)

Product images:

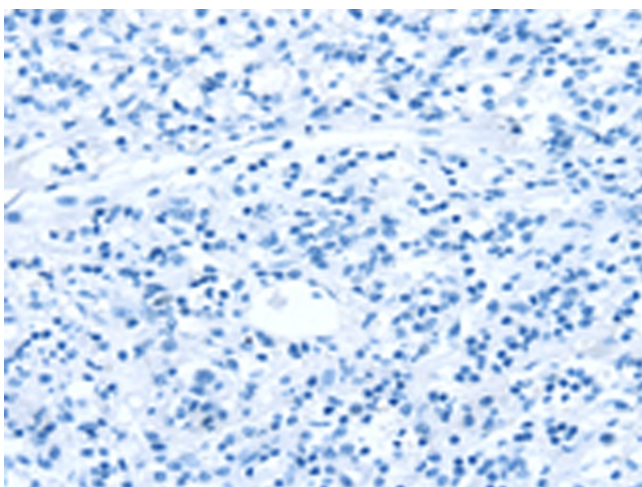
Immunohistochemistry of paraffin-embedded Human liver cancer tissue using TA368816 (GLP2R Antibody) at dilution 1/30 (Original magnification: ×200)



Immunohistochemistry of paraffin-embedded Human liver cancer tissue using TA368816 (GLP2R Antibody) at dilution 1/30, treated with fusion protein. (Original magnification: ×200)



Immunohistochemistry of paraffin-embedded Human prostate cancer tissue using TA368816 (GLP2R Antibody) at dilution 1/30 (Original magnification: $\times 200$)



Immunohistochemistry of paraffin-embedded Human prostate cancer tissue using TA368816 (GLP2R Antibody) at dilution 1/30, treated with fusion protein. (Original magnification: $\times 200$)