

## Product datasheet for **TA368812S**

### Galectin 2 (LGALS2) Rabbit Polyclonal Antibody

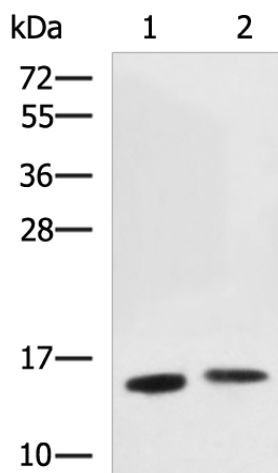
#### Product data:

Product Type:	Primary Antibodies
Applications:	IHC, WB
Recommended Dilution:	WB: 500-2000 WB positive control: Human fetal intestines tissue and Mouse stomach tissue lysates IHC: 50-100 Positive control: Human liver cancer Predicted cell location: Cytoplasm
Reactivity:	Human, Mouse
Host:	Rabbit
Isotype:	IgG
Clonality:	Polyclonal
Immunogen:	Fusion protein of human LGALS2
Formulation:	pH7.4 PBS, 0.05% NaN <sub>3</sub> , 40% Glycerol
Purification:	Antigen affinity purification
Conjugation:	Unconjugated
Storage:	Store at -20°C.
Stability:	1 year
Predicted Protein Size:	15 kDa
Gene Name:	galectin 2
Database Link:	<a href="#">Entrez Gene 3957 Human P05162</a>
Background:	The protein encoded by this gene is a soluble beta-galactoside binding lectin. The encoded protein is found as a homodimer and can bind to lymphotoxin-alpha. A single nucleotide polymorphism in an intron of this gene can alter the transcriptional level of the protein, with a resultant increased risk of myocardial infarction.
Synonyms:	HL14; MGC75071

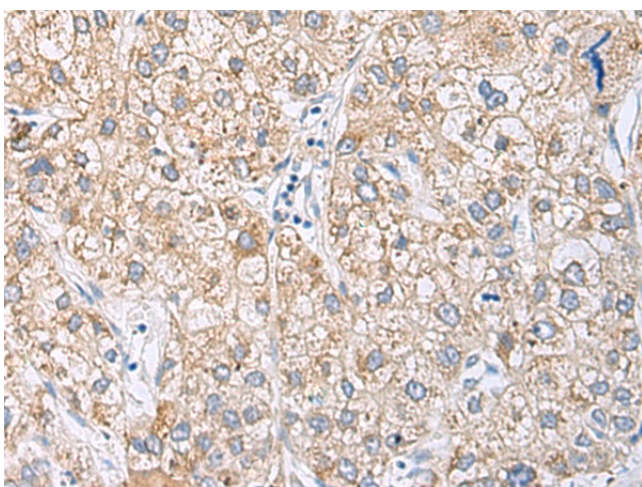


[View online »](#)

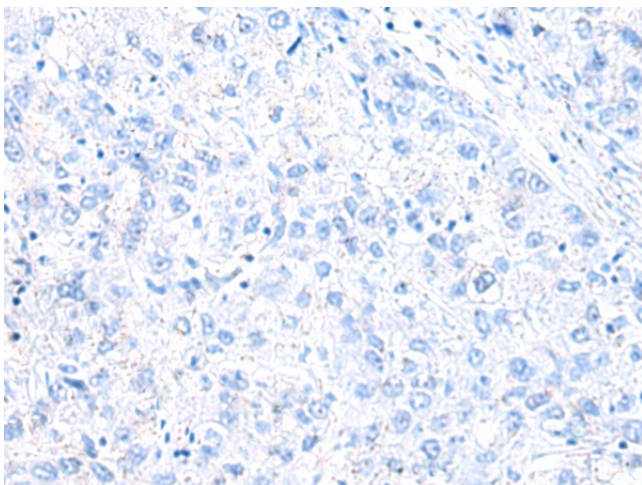
## Product images:



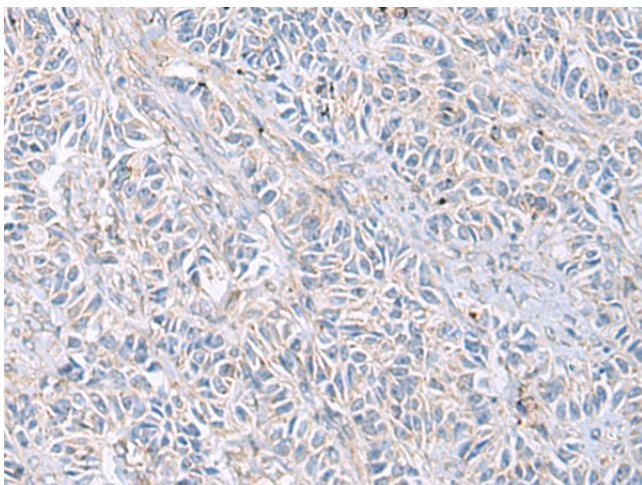
Gel: 12%SDS-PAGE  
Lysate: 40  $\mu$ g  
Lane 1-2: Human fetal intestines tissue and  
Mouse stomach tissue lysates  
Primary antibody: [TA368812] (LGALS2 Antibody)  
at dilution 1/600  
Secondary antibody: Goat anti rabbit IgG at  
1/5000 dilution  
Exposure time: 2 minutes



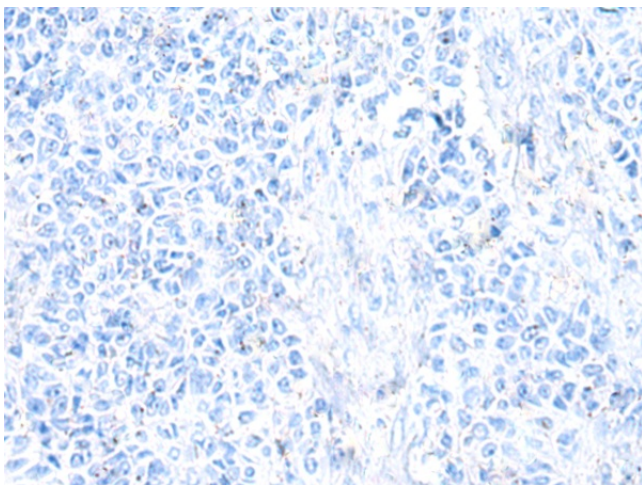
Immunohistochemistry of paraffin-embedded  
Human liver cancer tissue using [TA368812]  
(LGALS2 Antibody) at dilution 1/40 (Original  
magnification:  $\times$ 200)



Immunohistochemistry of paraffin-embedded Human liver cancer tissue using [TA368812] (LGALS2 Antibody) at dilution 1/40, treated with fusion protein. (Original magnification: ×200)



Immunohistochemistry of paraffin-embedded Human ovarian cancer tissue using [TA368812] (LGALS2 Antibody) at dilution 1/40 (Original magnification: ×200)



Immunohistochemistry of paraffin-embedded Human ovarian cancer tissue using [TA368812] (LGALS2 Antibody) at dilution 1/40, treated with fusion protein. (Original magnification: ×200)