

## Product datasheet for **TA368811**

### GNB1 Rabbit Polyclonal Antibody

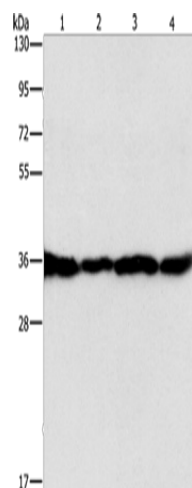
#### Product data:

Product Type:	Primary Antibodies
Applications:	IHC, WB
Recommended Dilution:	WB: 500-2000 WB positive control: HepG2, A549, 293T and 231 cells IHC: 25-100 Positive control: Human brain Predicted cell location: Cytoplasm and membrane
Reactivity:	Human, Mouse, Rat
Host:	Rabbit
Isotype:	IgG
Clonality:	Polyclonal
Immunogen:	Fusion protein of human GNB1
Formulation:	pH7.4 PBS, 0.05% NaN <sub>3</sub> , 40% Glycerol
Concentration:	lot specific
Purification:	Antigen affinity purification
Conjugation:	Unconjugated
Storage:	Store at -20°C.
Stability:	1 year
Predicted Protein Size:	37 kDa
Gene Name:	G protein subunit beta 1
Database Link:	<a href="#">Entrez Gene 2782 Human P62873</a>
Background:	Heterotrimeric guanine nucleotide-binding proteins (G proteins), which integrate signals between receptors and effector proteins, are composed of an alpha, a beta, and a gamma subunit. These subunits are encoded by families of related genes. This gene encodes a beta subunit. Beta subunits are important regulators of alpha subunits, as well as of certain signal transduction receptors and effectors. This gene uses alternative polyadenylation signals.
Synonyms:	GNB1



[View online »](#)

## Product images:



Gel: 15%SDS-PAGE

Lysate: 40  $\mu$ g

Lane 1-4: HepG2 cells

A549 cells

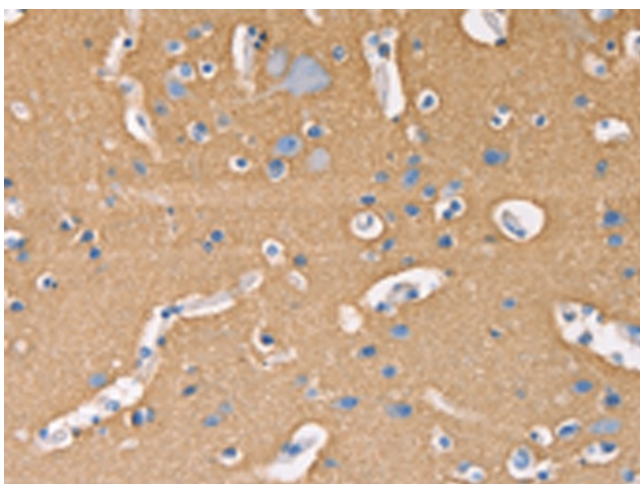
293T cells

231 cells

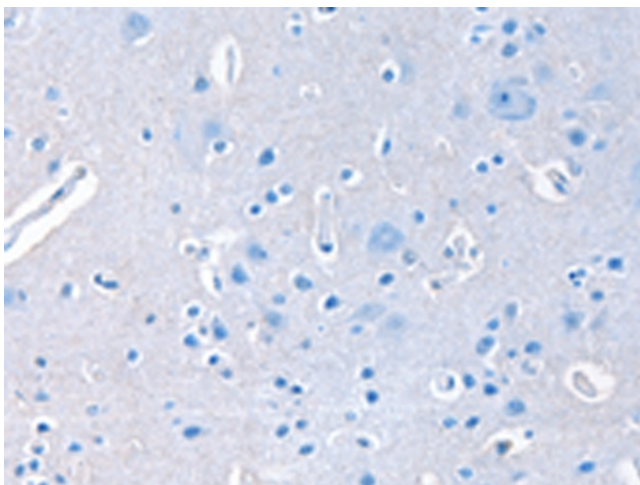
Primary antibody: TA368811 (GNB1 Antibody) at dilution 1/400

Secondary antibody: Goat anti rabbit IgG at 1/8000 dilution

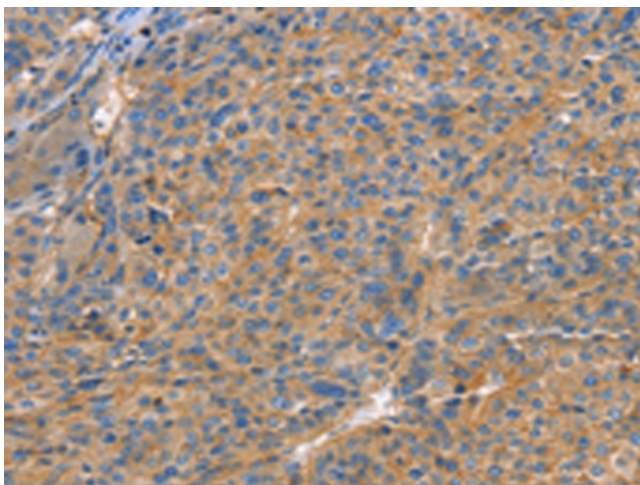
Exposure time: 1 second



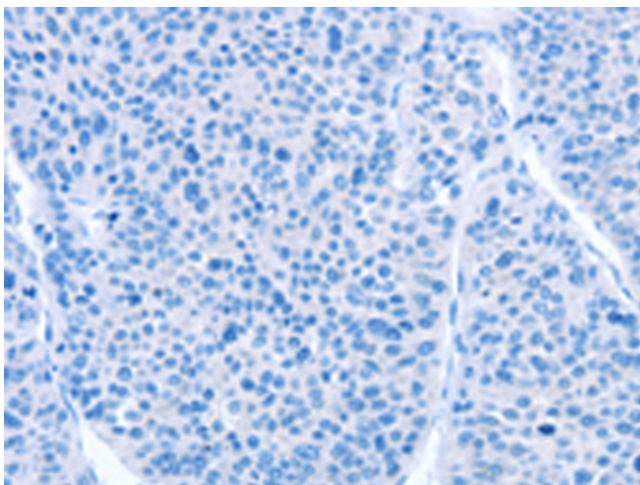
Immunohistochemistry of paraffin-embedded Human brain tissue using TA368811 (GNB1 Antibody) at dilution 1/20 (Original magnification:  $\times$ 200)



Immunohistochemistry of paraffin-embedded Human brain tissue using TA368811 (GNB1 Antibody) at dilution 1/20, treated with fusion protein. (Original magnification: x200)



Immunohistochemistry of paraffin-embedded Human liver cancer tissue using TA368811 (GNB1 Antibody) at dilution 1/20 (Original magnification: x200)



Immunohistochemistry of paraffin-embedded Human liver cancer tissue using TA368811 (GNB1 Antibody) at dilution 1/20, treated with fusion protein. (Original magnification: x200)