

Product datasheet for **TA368810S**

G protein alpha 13 (GNA13) Rabbit Polyclonal Antibody

Product data:

Product Type:	Primary Antibodies
Applications:	IHC, WB
Recommended Dilution:	WB: 500-2000 WB positive control: Mouse kidney tissue, human testis and brain malignant glioma tissue IHC: 25-100 Positive control: Human tonsil Predicted cell location: Cytoplasm
Reactivity:	Human, Mouse, Rat
Host:	Rabbit
Isotype:	IgG
Clonality:	Polyclonal
Immunogen:	Fusion protein of human GNA13
Formulation:	pH7.4 PBS, 0.05% NaN ₃ , 40% Glycerol
Purification:	Antigen affinity purification
Conjugation:	Unconjugated
Storage:	Store at -20°C.
Stability:	1 year
Predicted Protein Size:	44 kDa
Gene Name:	G protein subunit alpha 13
Database Link:	Entrez Gene 10672 Human Q14344

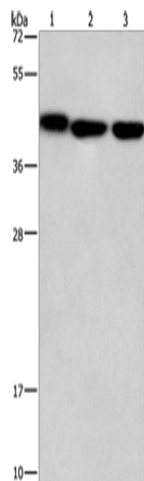
Background: Guanine nucleotide-binding protein subunit alpha-13 is a protein that in humans is encoded by the GNA13 gene. Guanine nucleotide-binding proteins (G proteins) are involved as modulators or transducers in various transmembrane signaling systems. G proteins are composed of 3 units; alpha, beta and gamma. The alpha chain contains the guanine nucleotide binding site. Interacts with UBXD5. Interacts with HAX1. Interacts (when active) with PPP5C (via TPR repeats); activates PPP5C phosphatase activity and translocates PPP5C to the cell membrane.



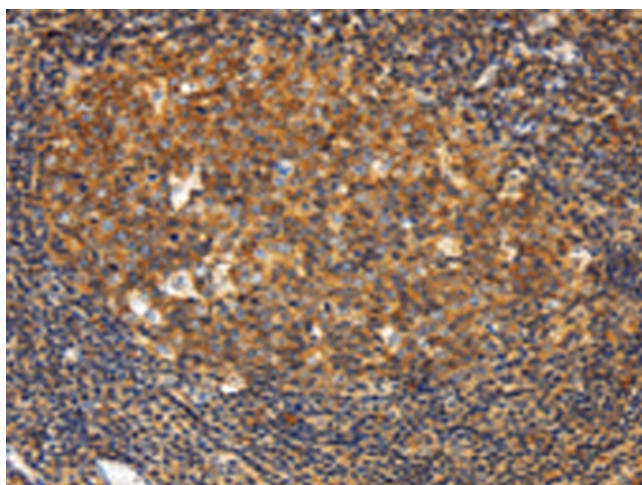
[View online »](#)

Synonyms: G13; MGC46138

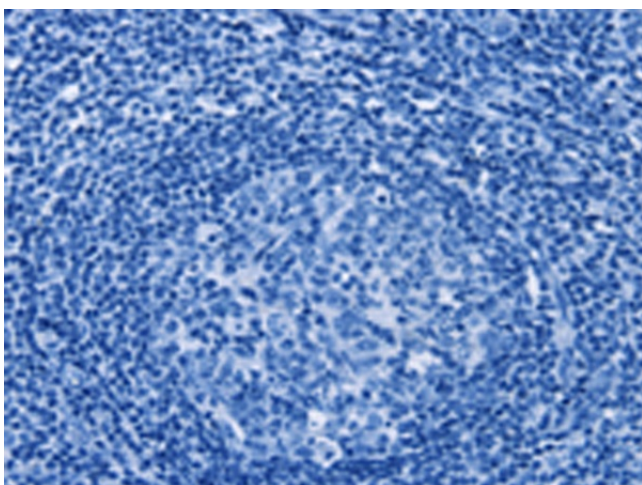
Product images:



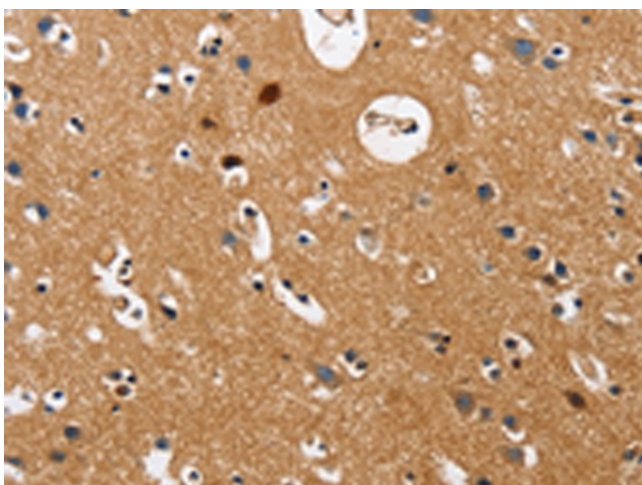
Gel: 15%SDS-PAGE
 Lysate: 40 µg
 Lane 1-3: Mouse kidney tissue
 human testis tissue
 Human brain malignant glioma tissue
 Primary antibody: [TA368810] (GNA13 Antibody)
 at dilution 1/450
 Secondary antibody: Goat anti rabbit IgG at
 1/8000 dilution
 Exposure time: 1 minute



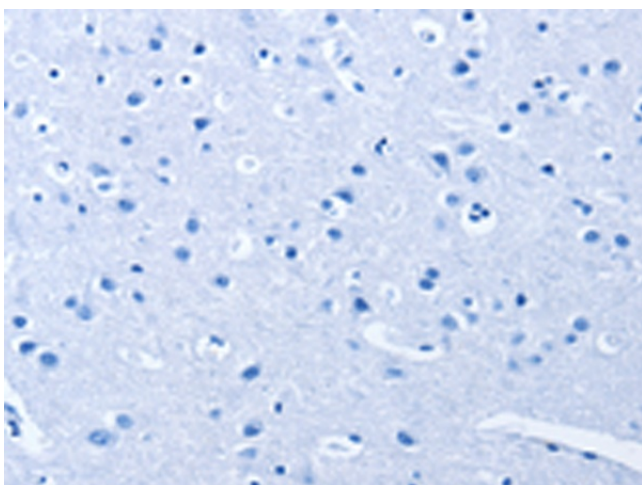
Immunohistochemistry of paraffin-embedded
 Human tonsil tissue using [TA368810] (GNA13
 Antibody) at dilution 1/20 (Original magnification:
 ×200)



Immunohistochemistry of paraffin-embedded Human tonsil tissue using [TA368810] (GNA13 Antibody) at dilution 1/20, treated with fusion protein. (Original magnification: $\times 200$)



Immunohistochemistry of paraffin-embedded Human brain tissue using [TA368810] (GNA13 Antibody) at dilution 1/20 (Original magnification: $\times 200$)



Immunohistochemistry of paraffin-embedded Human brain tissue using [TA368810] (GNA13 Antibody) at dilution 1/20, treated with fusion protein. (Original magnification: $\times 200$)