

## Product datasheet for **TA368807**

### **FGL1 Rabbit Polyclonal Antibody**

#### **Product data:**

Product Type:	Primary Antibodies
Applications:	IHC, WB
Recommended Dilution:	WB: 500-2000 WB positive control: Human fetal liver tissue IHC: 25-100 Positive control: Human liver cancer Predicted cell location: Cytoplasm
Reactivity:	Human, Mouse, Rat
Host:	Rabbit
Isotype:	IgG
Clonality:	Polyclonal
Immunogen:	Fusion protein of human FGL1
Formulation:	pH7.4 PBS, 0.05% NaN <sub>3</sub> , 40% Glycerol
Concentration:	lot specific
Purification:	Antigen affinity purification
Conjugation:	Unconjugated
Storage:	Store at -20°C.
Stability:	1 year
Predicted Protein Size:	36 kDa
Gene Name:	fibrinogen like 1
Database Link:	<a href="#">Entrez Gene 2267 Human Q08830</a>



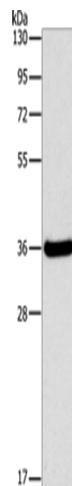
[View online »](#)

**Background:**

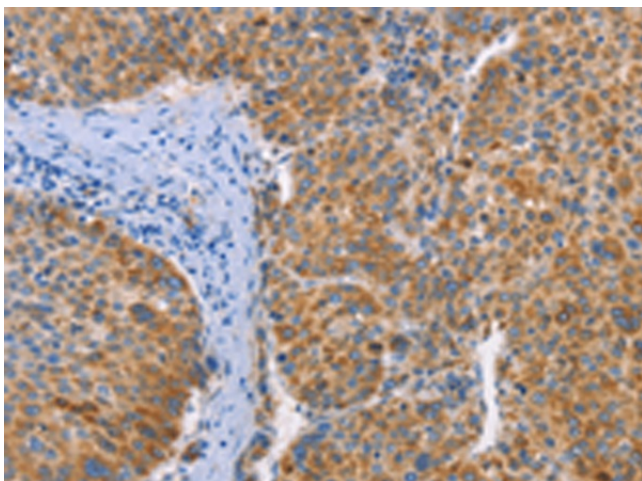
Fibrinogen-like 1 is a member of the fibrinogen family. This protein is homologous to the carboxy terminus of the fibrinogen beta- and gamma- subunits which contains the four conserved cysteines of fibrinogens and fibrinogen related proteins. However, this protein lacks the platelet-binding site, cross-linking region and a thrombin-sensitive site which are necessary for fibrin clot formation. This protein may play a role in the development of hepatocellular carcinomas. Four alternatively spliced transcript variants encoding the same protein exist for this gene.

**Synonyms:**

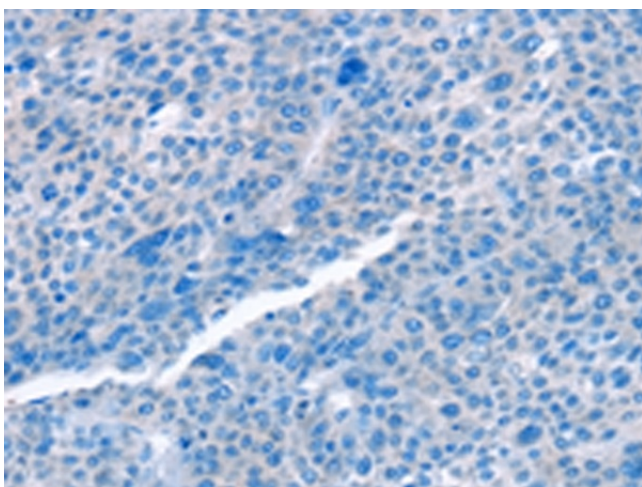
hepassocin; HFREP-1; HFREP1; HP-041; LFIRE-1; LFIRE1; MGC12455; OTTHUMP00000122468

**Product images:**

Gel: 15%SDS-PAGE  
Lysate: 40 µg  
Lane: Human fetal liver tissue  
Primary antibody: TA368807 (FGL1 Antibody) at dilution 1/1050  
Secondary antibody: Goat anti rabbit IgG at 1/8000 dilution  
Exposure time: 2 seconds



Immunohistochemistry of paraffin-embedded Human liver cancer tissue using TA368807 (FGL1 Antibody) at dilution 1/25 (Original magnification: ×200)



Immunohistochemistry of paraffin-embedded Human liver cancer tissue using TA368807 (FGL1 Antibody) at dilution 1/25, treated with fusion protein. (Original magnification: x200)