

## Product datasheet for **TA368806**

### Radixin (RDX) Rabbit Polyclonal Antibody

#### Product data:

Product Type:	Primary Antibodies
Applications:	IHC, WB
Recommended Dilution:	WB: 500-2000 WB positive control: Hela cells and human brain tissue, 293T cells, human hepatocellular carcinoma tissue and NIH/3T3 cells IHC: 100-300 Positive control: Human tonsil Predicted cell location: Cytoplasm
Reactivity:	Human, Mouse
Host:	Rabbit
Isotype:	IgG
Clonality:	Polyclonal
Immunogen:	Fusion protein of human RDX
Formulation:	pH7.4 PBS, 0.05% NaN <sub>3</sub> , 40% Glycerol
Concentration:	lot specific
Purification:	Antigen affinity purification
Conjugation:	Unconjugated
Storage:	Store at -20°C.
Stability:	1 year
Predicted Protein Size:	69 kDa
Gene Name:	radixin
Database Link:	<a href="#">Entrez Gene 5962 Human P35241</a>



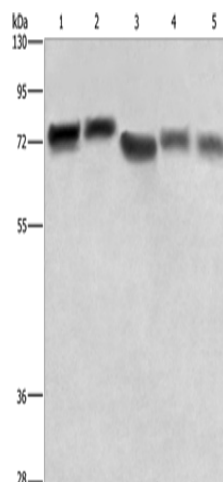
[View online »](#)

**Background:**

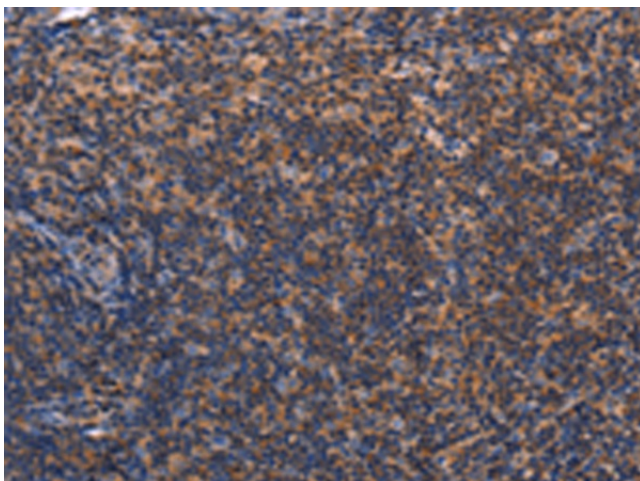
Radixin is a cytoskeletal protein that may be important in linking actin to the plasma membrane. It is highly similar in sequence to both ezrin and moesin. The radixin gene has been localized by fluorescence in situ hybridization to 11q23. A truncated version representing a pseudogene (RDXP2) was assigned to Xp21.3. Another pseudogene that seemed to lack introns (RDXP1) was mapped to 11p by Southern and PCR analyses. Multiple alternatively spliced transcript variants encoding different isoforms have been found for this gene.

**Synonyms:**

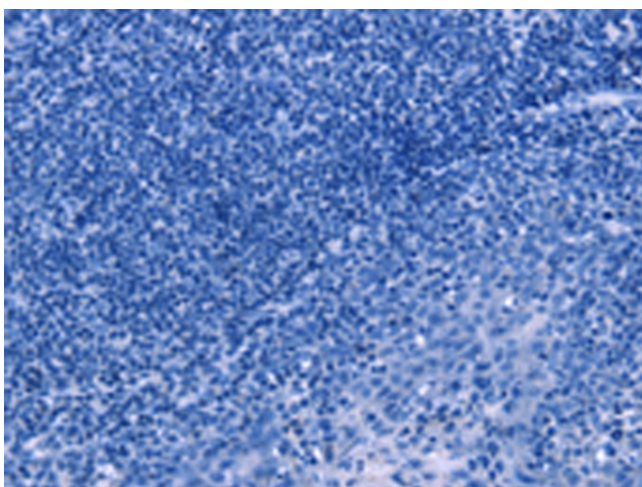
DFNB24; radixin

**Product images:**


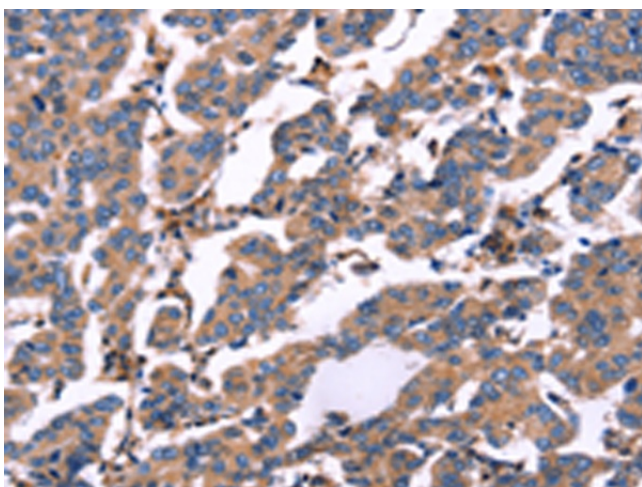
Gel: 6%SDS-PAGE  
 Lysate: 40 µg  
 Lane 1-5: HeLa cells  
 human brain tissue  
 293T cells  
 human hepatocellular carcinoma tissue  
 NIH/3T3 cells  
 Primary antibody: TA368806 (RDX Antibody) at dilution 1/600  
 Secondary antibody: Goat anti rabbit IgG at 1/8000 dilution  
 Exposure time: 5 seconds



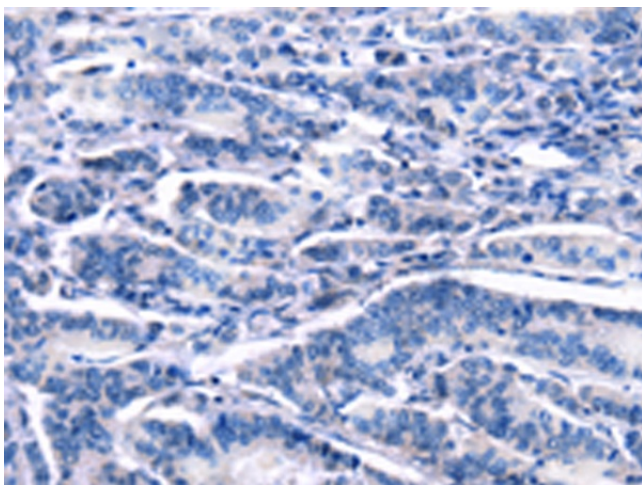
Immunohistochemistry of paraffin-embedded Human tonsil tissue using TA368806 (RDX Antibody) at dilution 1/60 (Original magnification: ×200)



Immunohistochemistry of paraffin-embedded Human tonsil tissue using TA368806 (RDX Antibody) at dilution 1/60, treated with fusion protein. (Original magnification: ×200)



Immunohistochemistry of paraffin-embedded Human breast cancer tissue using TA368806 (RDX Antibody) at dilution 1/60 (Original magnification: ×200)



Immunohistochemistry of paraffin-embedded Human breast cancer tissue using TA368806 (RDX Antibody) at dilution 1/60, treated with fusion protein. (Original magnification: ×200)