

Product datasheet for **TA368801**

DLK (DLK1) Rabbit Polyclonal Antibody

Product data:

Product Type:	Primary Antibodies
Applications:	IHC, WB
Recommended Dilution:	WB: 500-2000 WB positive control: HEPG2 and 231 cell lysates IHC: 25-100 Positive control: Human colorectal cancer Predicted cell location: Cell membrane
Reactivity:	Human, Mouse
Host:	Rabbit
Isotype:	IgG
Clonality:	Polyclonal
Immunogen:	Fusion protein of human DLK1
Formulation:	pH7.4 PBS, 0.05% NaN ₃ , 40% Glycerol
Concentration:	lot specific
Purification:	Antigen affinity purification
Conjugation:	Unconjugated
Storage:	Store at -20°C.
Stability:	1 year
Predicted Protein Size:	41 kDa
Gene Name:	delta like non-canonical Notch ligand 1
Database Link:	Entrez Gene 8788 Human P80370



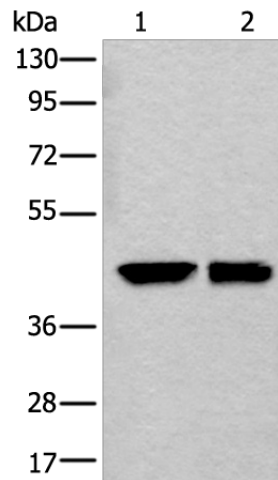
[View online »](#)

Background:

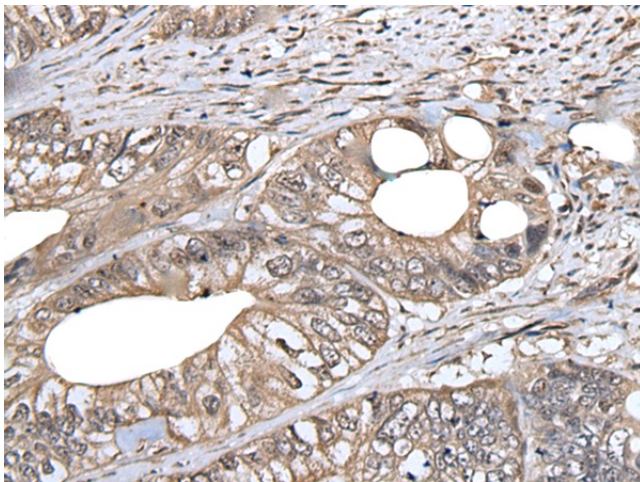
This gene encodes a transmembrane protein that contains multiple epidermal growth factor repeats that functions as a regulator of cell growth. The encoded protein is involved in the differentiation of several cell types including adipocytes. This gene is located in a region of chromosome 14 frequently showing uniparental disomy, and is imprinted and expressed from the paternal allele. A single nucleotide variant in this gene is associated with child and adolescent obesity and shows polar overdominance, where heterozygotes carrying an active paternal allele express the phenotype, while mutant homozygotes are normal.

Synonyms:

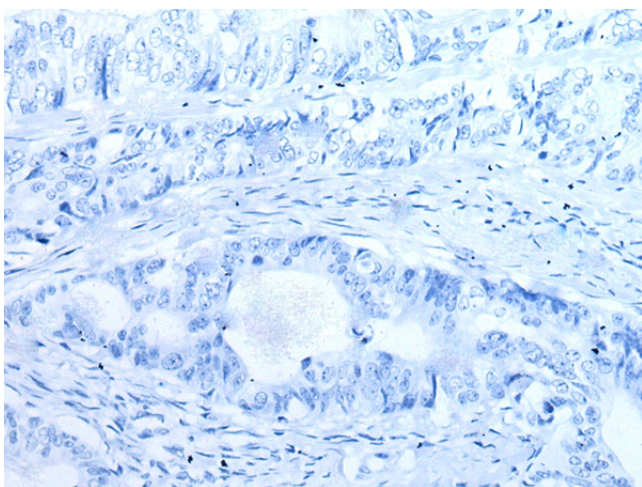
DLK; DLK-1; FA1; pG2; Pref-1; PREF1; secredelin; ZOG

Product images:

Gel: 6%SDS-PAGE
Lysate: 40 µg
Lane 1-2: HEPG2 and 231 cell lysates
Primary antibody: TA368801 (DLK1 Antibody) at dilution 1/250
Secondary antibody: Goat anti rabbit IgG at 1/8000 dilution
Exposure time: 3 seconds



Immunohistochemistry of paraffin-embedded Human colorectal cancer tissue using TA368801 (DLK1 Antibody) at dilution 1/30 (Original magnification: ×200)



Immunohistochemistry of paraffin-embedded Human colorectal cancer tissue using TA368801 (DLK1 Antibody) at dilution 1/30, treated with fusion protein. (Original magnification: $\times 200$)