

Product datasheet for **TA368800**

DTX3L Rabbit Polyclonal Antibody

Product data:

Product Type:	Primary Antibodies
Applications:	WB
Recommended Dilution:	WB: 200-1000 WB positive control: A431 cell lysate
Reactivity:	Human
Host:	Rabbit
Isotype:	IgG
Clonality:	Polyclonal
Immunogen:	Fusion protein of human DTX3L
Formulation:	pH7.4 PBS, 0.05% NaN ₃ , 40% Glycerol
Concentration:	lot specific
Purification:	Antigen affinity purification
Conjugation:	Unconjugated
Storage:	Store at -20°C.
Stability:	1 year
Predicted Protein Size:	84 kDa
Gene Name:	deltex 3 like, E3 ubiquitin ligase
Database Link:	Entrez Gene 151636 Human Q8TDB6



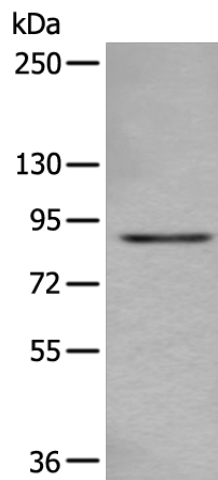
[View online »](#)

Background:

The Deltex family is responsible for influencing Notch signaling and may regulate transcription through interactions with specific transcription factors. Deltex proteins have a basic N-terminus, a central proline-rich region and a C-terminal RING-type zinc finger domain, a motif often found in ubiquitin-protein isopeptide ligases (E3). The RING-type zinc finger domain binds two Zn²⁺ atoms and forms a cross-brace motif that is essential for many proteins involved the ubiquitination pathway. DTX3L (Deltex-3-like), also known as BBAP, is a 740 amino acid protein that is similar to Deltex-3 and acts as a ubiquitin ligase in vitro. DTX3L can heterodimerize with Deltex-1, a transcriptional regulator, thereby enhancing the activity of the E3 ubiquitin ligase complex and increasing the influence of E3 on the Notch signaling pathway.

Synonyms:

BBAP; Rhysin-2; Rhysin2

Product images:

Gel: 6%SDS-PAGE
Lysate: 40 µg
Lane: A431 cell lysate
Primary antibody: TA368800 (DTX3L Antibody) at dilution 1/300
Secondary antibody: Goat anti rabbit IgG at 1/8000 dilution
Exposure time: 5 seconds