

Product datasheet for **TA368794**

Cytochrome C (CYCS) Rabbit Polyclonal Antibody

Product data:

Product Type:	Primary Antibodies
Applications:	IHC, WB
Recommended Dilution:	WB: 500-2000 WB positive control: Hela, K562 cells, mouse brain, heart and kidney tissue, PC3 and Jurkat cells IHC: 100-300 Positive control: Human colon cancer Predicted cell location: Cytoplasm
Reactivity:	Human, Mouse, Rat
Host:	Rabbit
Isotype:	IgG
Clonality:	Polyclonal
Immunogen:	Fusion protein of human CYCS
Formulation:	pH7.4 PBS, 0.05% NaN ₃ , 40% Glycerol
Concentration:	lot specific
Purification:	Antigen affinity purification
Conjugation:	Unconjugated
Storage:	Store at -20°C.
Stability:	1 year
Predicted Protein Size:	12 kDa
Gene Name:	cytochrome c, somatic
Database Link:	Entrez Gene 54205 Human P99999



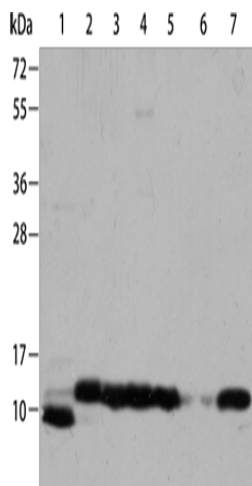
[View online »](#)

Background:

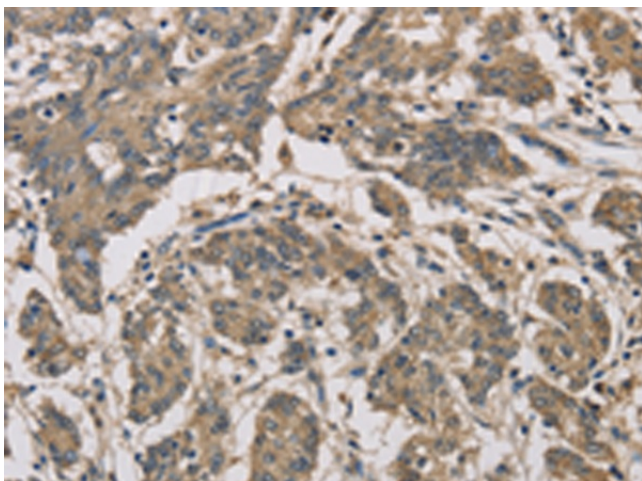
This gene encodes a small heme protein that functions as a central component of the electron transport chain in mitochondria. The encoded protein associates with the inner membrane of the mitochondrion where it accepts electrons from cytochrome b and transfers them to the cytochrome oxidase complex. This protein is also involved in initiation of apoptosis. Mutations in this gene are associated with autosomal dominant nonsyndromic thrombocytopenia. Numerous processed pseudogenes of this gene are found throughout the human genome.

Synonyms:

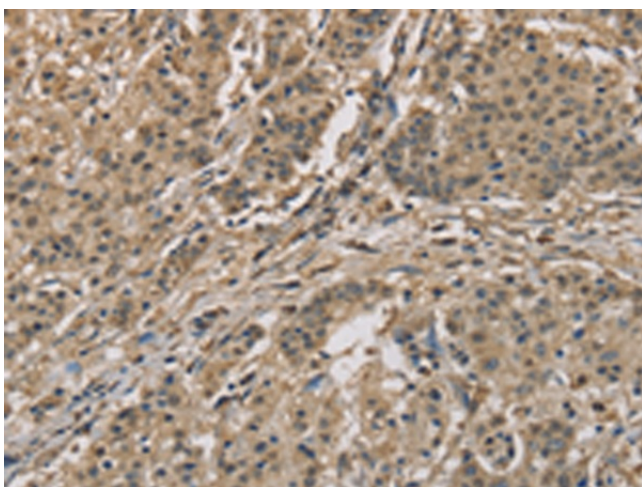
CYC; HCS; OTTHUMP00000202043; OTTHUMP00000202044; THC4

Product images:


Gel: 8%SDS-PAGE
 Lysate: 40 µg
 Lane 1-7: HeLa cells
 K562 cells
 mouse brain tissue
 Mouse heart tissue
 Mouse kidney tissue
 PC3 cells
 Jurkat cells
 Primary antibody: TA368794 (CYCS Antibody) at dilution 1/700
 Secondary antibody: Goat anti rabbit IgG at 1/8000 dilution
 Exposure time: 5 seconds



Immunohistochemistry of paraffin-embedded Human colon cancer tissue using TA368794 (CYCS Antibody) at dilution 1/70. (Original magnification: ×200)



Immunohistochemistry of paraffin-embedded Human gastric cancer tissue using TA368794 (CYCS Antibody) at dilution 1/70. (Original magnification: ×200)