

Product datasheet for **TA368793S**

Cyclin J (CCNJ) Rabbit Polyclonal Antibody

Product data:

Product Type:	Primary Antibodies
Applications:	IHC
Recommended Dilution:	IHC: 25-100 Positive control: Human liver cancer Predicted cell location: Cytoplasm
Reactivity:	Human
Host:	Rabbit
Isotype:	IgG
Clonality:	Polyclonal
Immunogen:	Fusion protein of human CCNJ
Formulation:	pH7.4 PBS, 0.05% NaN ₃ , 40% Glycerol
Purification:	Antigen affinity purification
Conjugation:	Unconjugated
Storage:	Store at -20°C.
Stability:	1 year
Gene Name:	cyclin J
Database Link:	Entrez Gene 54619 Human Q5T5M9

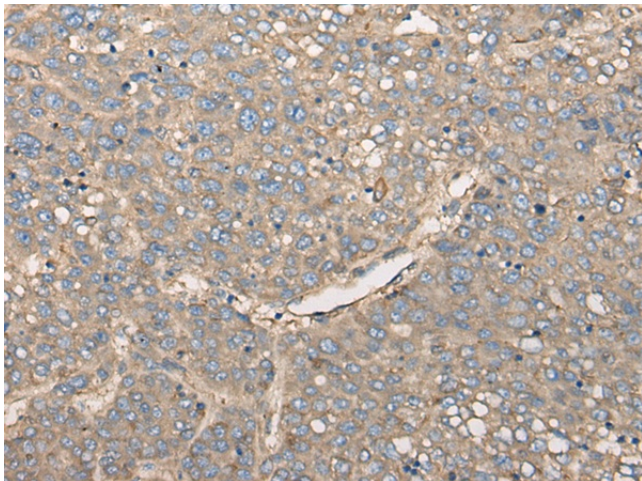
Background: Cyclin J is a 372 amino acid protein encoded by the human gene CCNJ located on chromosome 10. Cyclin J belongs to the cyclin family and contains one cyclin N-terminal domain. A cyclin forms a complex with its partner cyclin-dependent kinase (Cdk), which activates the protein kinase function of the Cdk. Cyclins are so named because their concentration varies in a cyclical fashion during the cell cycle. They are produced or degraded as needed in order to drive the cell through the different stages of the cell cycle. When its concentrations in the cell are low, the cyclin detaches from the Cdk, inhibiting the activity of the enzyme, probably by causing a protein chain to block the enzymatic site. Cyclin J-associated kinase activity is required for the early embryonic division cycles.

Synonyms: bA690P14.1; FLJ10895

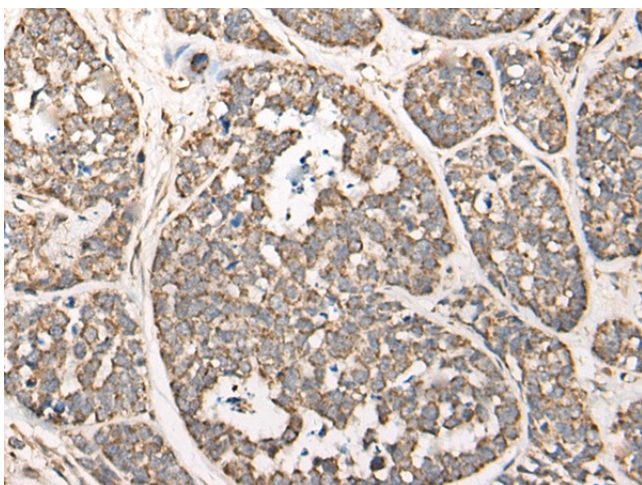


[View online »](#)

Product images:



Immunohistochemistry of paraffin-embedded Human liver cancer tissue using [TA368793] (CCNJ Antibody) at dilution 1/30. (Original magnification: ×200)



Immunohistochemistry of paraffin-embedded Human esophagus cancer tissue using [TA368793] (CCNJ Antibody) at dilution 1/30. (Original magnification: ×200)