

## Product datasheet for **TA368790**

### Cullin 7 (CUL7) Rabbit Polyclonal Antibody

#### Product data:

Product Type:	Primary Antibodies
Applications:	IHC, WB
Recommended Dilution:	WB: 200-1000 WB positive control: A431 cell IHC: 25-100 Positive control: Human thyroid cancer Predicted cell location: cytoplasm
Reactivity:	Human, Rat
Host:	Rabbit
Isotype:	IgG
Clonality:	Polyclonal
Immunogen:	Fusion protein of human CUL7
Formulation:	pH7.4 PBS, 0.05% NaN <sub>3</sub> , 40% Glycerol
Concentration:	lot specific
Purification:	Antigen affinity purification
Conjugation:	Unconjugated
Storage:	Store at -20°C.
Stability:	1 year
Predicted Protein Size:	191 kDa
Gene Name:	cullin 7
Database Link:	<a href="#">Entrez Gene 9820 Human Q14999</a>



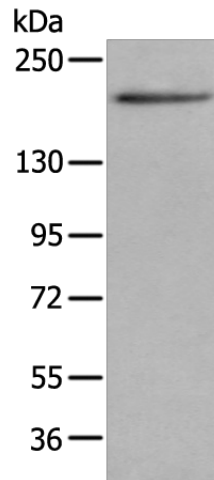
[View online »](#)

**Background:**

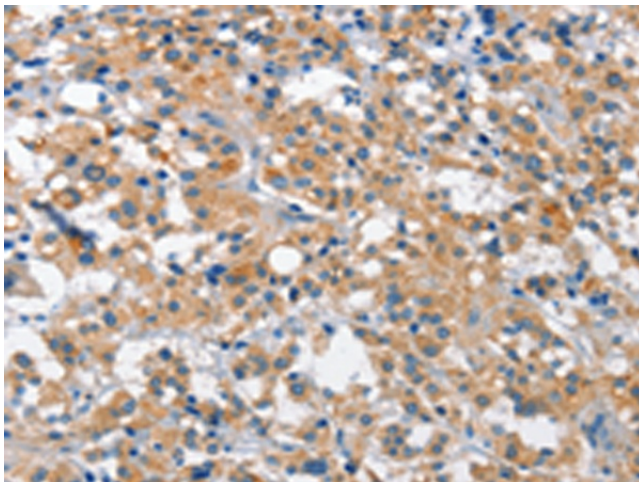
The protein encoded by this gene is a component of an E3 ubiquitin-protein ligase complex. The encoded protein interacts with TP53, CUL9, and FBXW8 proteins. Defects in this gene are a cause of 3M syndrome type 1 (3M1). Two transcript variants encoding different isoforms have been found for this gene. CUL-7 is highly expressed in fetal kidney and adult skeletal muscle in addition to abundant expression in fetal brain, and adult pancreas, kidney, placenta and heart. It is also detected in trophoblasts, lymphoblasts, osteoblasts, chondrocytes and skin fibroblasts.

**Synonyms:**

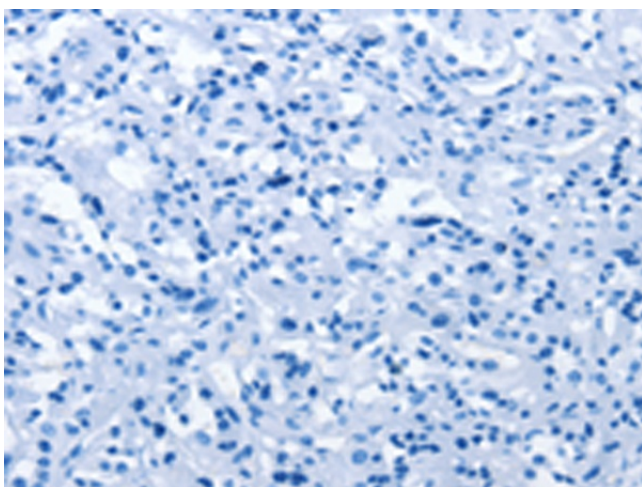
CUL-7; dJ20C7.5; KIAA0076

**Product images:**

Gel: 6%SDS-PAGE  
Lysate: 40 µg  
Lane: A431 cell  
Primary antibody: TA368790 (CUL7 Antibody) at dilution 1/200  
Secondary antibody: Goat anti rabbit IgG at 1/8000 dilution  
Exposure time: 3 seconds



Immunohistochemistry of paraffin-embedded Human thyroid cancer tissue using TA368790 (CUL7 Antibody) at dilution 1/35 (Original magnification: ×200)



Immunohistochemistry of paraffin-embedded Human thyroid cancer tissue using TA368790 (CUL7 Antibody) at dilution 1/35, treated with fusion protein. (Original magnification: ×200)