

## Product datasheet for **TA368787**

### COX7A2L Rabbit Polyclonal Antibody

#### Product data:

Product Type:	Primary Antibodies
Applications:	IHC, WB
Recommended Dilution:	WB: 500-2000 WB positive control: A549, HepG2, Hela, RAW264.7 cell lysates IHC: 50-200 Positive control: Human thyroid cancer Predicted cell location: Cytoplasm
Reactivity:	Human, Mouse
Host:	Rabbit
Isotype:	IgG
Clonality:	Polyclonal
Immunogen:	Fusion protein of human COX7A2L
Formulation:	pH7.4 PBS, 0.05% NaN <sub>3</sub> , 40% Glycerol
Concentration:	lot specific
Purification:	Antigen affinity purification
Conjugation:	Unconjugated
Storage:	Store at -20°C.
Stability:	1 year
Predicted Protein Size:	13 kDa
Gene Name:	cytochrome c oxidase subunit 7A2 like
Database Link:	<a href="#">Entrez Gene 9167 Human O14548</a>



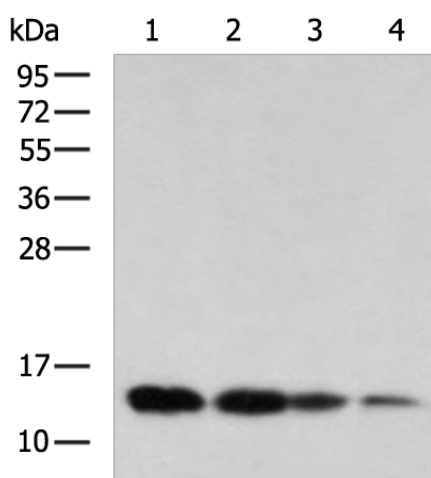
[View online »](#)

**Background:**

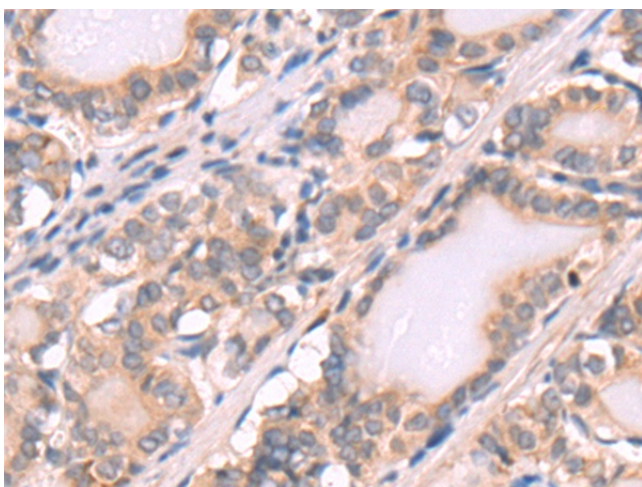
Cytochrome c oxidase (COX), the terminal component of the mitochondrial respiratory chain, catalyzes the electron transfer from reduced cytochrome c to oxygen. This component is a heteromeric complex consisting of 3 catalytic subunits encoded by mitochondrial genes and multiple structural subunits encoded by nuclear genes. The mitochondrially-encoded subunits function in electron transfer, and the nuclear-encoded subunits may function in the regulation and assembly of the complex. This nuclear gene encodes a protein similar to polypeptides 1 and 2 of subunit VIIa in the C-terminal region, and also highly similar to the mouse Sig81 protein sequence. This gene is expressed in all tissues, and upregulated in a breast cancer cell line after estrogen treatment. It is possible that this gene represents a regulatory subunit of COX and mediates the higher level of energy production in target cells by estrogen. Several transcript variants, some protein-coding and others non-protein coding, have been found for this gene.

**Synonyms:**

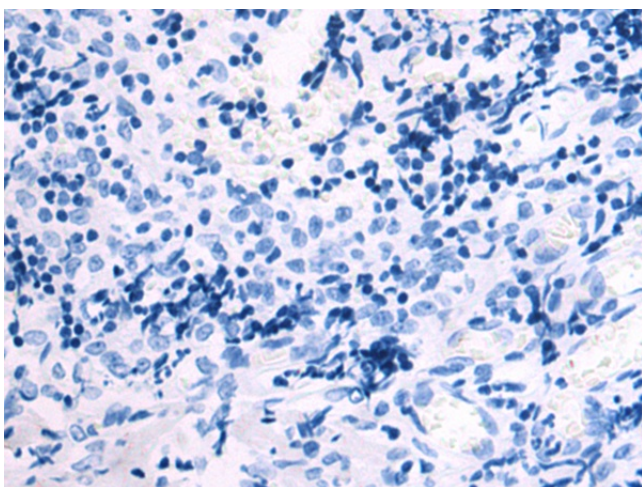
COX7AR; COX7RP; EB1; OTTHUMP00000158765; SIG81

**Product images:**

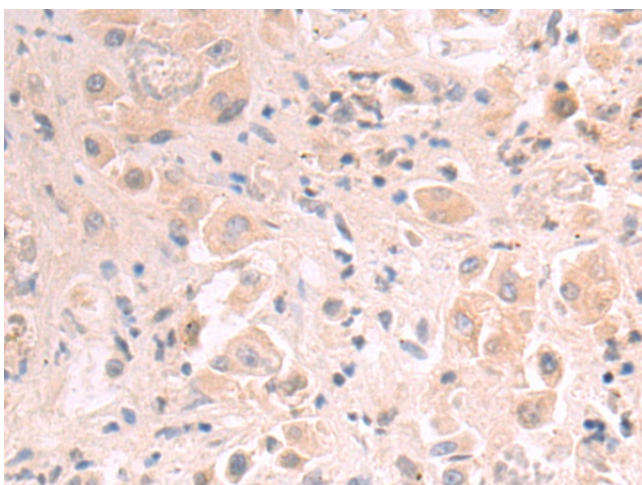
Gel: 12%SDS-PAGE  
Lysate: 40 µg  
Lane 1-4: A549  
HepG2  
Hela  
RAW264.7 cell lysates  
Primary antibody: TA368787 (COX7A2L Antibody)  
at dilution 1/550  
Secondary antibody: Goat anti rabbit IgG at  
1/5000 dilution  
Exposure time: 15 seconds



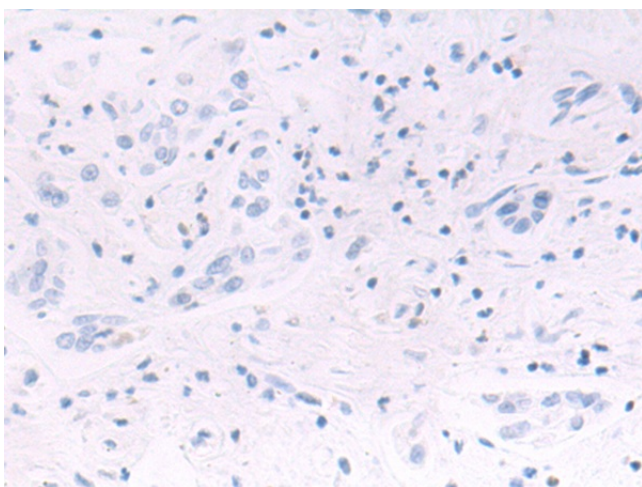
Immunohistochemistry of paraffin-embedded Human thyroid cancer tissue using TA368787 (COX7A2L Antibody) at dilution 1/65 (Original magnification: x200)



Immunohistochemistry of paraffin-embedded Human thyroid cancer tissue using TA368787 (COX7A2L Antibody) at dilution 1/65, treated with fusion protein. (Original magnification: x200)



Immunohistochemistry of paraffin-embedded Human liver cancer tissue using TA368787 (COX7A2L Antibody) at dilution 1/65 (Original magnification: x200)



Immunohistochemistry of paraffin-embedded Human liver cancer tissue using TA368787 (COX7A2L Antibody) at dilution 1/65, treated with fusion protein. (Original magnification: ×200)