

Product datasheet for **TA368786**

Claudin 23 (CLDN23) Rabbit Polyclonal Antibody

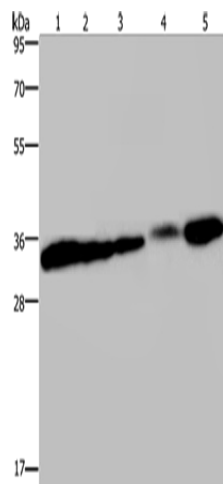
Product data:

Product Type:	Primary Antibodies
Applications:	WB
Recommended Dilution:	WB: 500-2000 WB positive control: HUVEC and 293T cells, mouse bladder, human placenta and mouse kidney tissue
Reactivity:	Human, Mouse
Host:	Rabbit
Isotype:	IgG
Clonality:	Polyclonal
Immunogen:	Fusion protein of human CLDN23
Formulation:	pH7.4 PBS, 0.05% NaN ₃ , 40% Glycerol
Concentration:	lot specific
Purification:	Antigen affinity purification
Conjugation:	Unconjugated
Storage:	Store at -20°C.
Stability:	1 year
Predicted Protein Size:	32 kDa
Gene Name:	claudin 23
Database Link:	Entrez Gene 137075 Human Q96B33
Background:	This gene encodes a member of the claudin family. Claudins are integral membrane proteins and components of tight junction strands. Tight junction strands serve as a physical barrier to prevent solutes and water from passing freely through the paracellular space between epithelial or endothelial cell sheets, and also play critical roles in maintaining cell polarity and signal transductions. This gene is expressed in germinal center B-cells, placenta and stomach as well as in colon tumor. This gene is down-regulated in intestinal type gastric cancer.
Synonyms:	2310014B08Rik; CLDNL; hCG1646163



[View online »](#)

Product images:



Gel: 10%SDS-PAGE
Lysate: 40 μ g
Lane 1-5: HUVEC cells
293T cells
mouse bladder tissue
human placenta tissue
mouse kidney tissue
Primary antibody: TA368786 (CLDN23 Antibody)
at dilution 1/200
Secondary antibody: Goat anti rabbit IgG at
1/8000 dilution
Exposure time: 40 seconds