

Product datasheet for **TA368784**

Collagen II (COL2A1) Rabbit Polyclonal Antibody

Product data:

Product Type:	Primary Antibodies
Applications:	IHC, WB
Recommended Dilution:	WB: 500-2000 WB positive control: C2C12 cell, Rat skeletal muscle tissue lysates IHC: 50-200 Positive control: Human liver cancer Predicted cell location: Secreted
Reactivity:	Human, Mouse, Rat
Host:	Rabbit
Isotype:	IgG
Clonality:	Polyclonal
Immunogen:	Fusion protein of human COL2A1
Formulation:	pH7.4 PBS, 0.05% NaN ₃ , 40% Glycerol
Concentration:	lot specific
Purification:	Antigen affinity purification
Conjugation:	Unconjugated
Storage:	Store at -20°C.
Stability:	1 year
Predicted Protein Size:	142 kDa
Gene Name:	collagen type II alpha 1 chain
Database Link:	Entrez Gene 1280 Human P02458



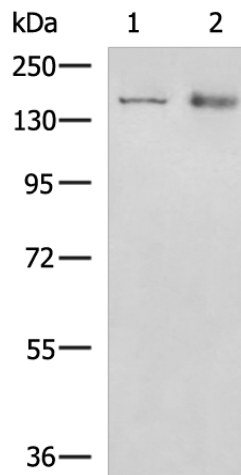
[View online »](#)

Background:

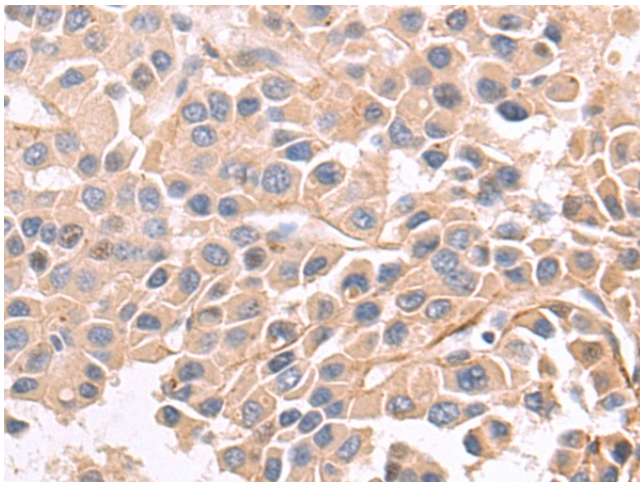
This gene encodes the alpha-1 chain of type II collagen, a fibrillar collagen found in cartilage and the vitreous humor of the eye. Mutations in this gene are associated with achondrogenesis, chondrodysplasia, early onset familial osteoarthritis, SED congenita, Langer-Saldino achondrogenesis, Kniest dysplasia, Stickler syndrome type I, and spondyloepimetaphyseal dysplasia Strudwick type. In addition, defects in processing chondrocalcin, a calcium binding protein that is the C-propeptide of this collagen molecule, are also associated with chondrodysplasia. There are two transcripts identified for this gene.

Synonyms:

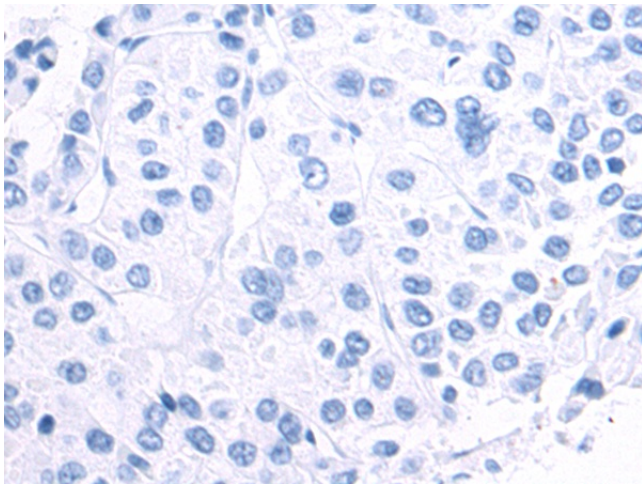
ANFH; AOM; chondrocalcin; COL11A3; MGC131516; SEDC

Product images:


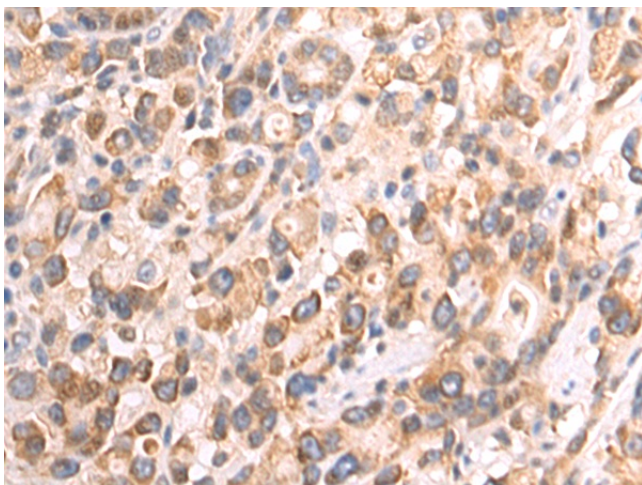
Gel: 6%SDS-PAGE
 Lysate: 40 µg
 Lane 1-2: C2C12 cell
 Rat skeletal muscle tissue lysates
 Primary antibody: TA368784 (COL2A1 Antibody)
 at dilution 1/700
 Secondary antibody: Goat anti rabbit IgG at
 1/5000 dilution
 Exposure time: 5 minutes



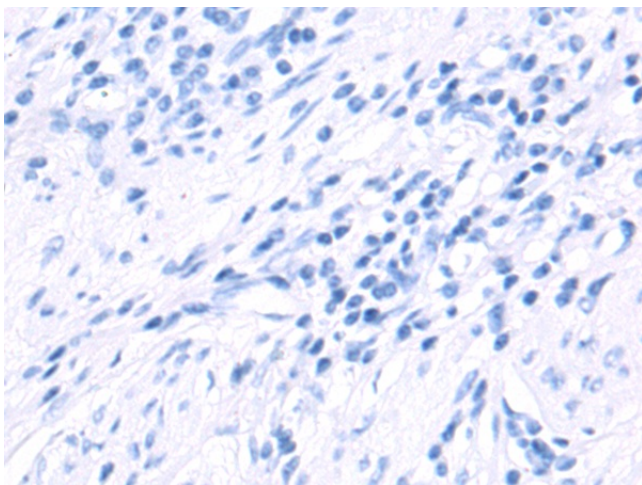
Immunohistochemistry of paraffin-embedded
 Human liver cancer tissue using TA368784
 (COL2A1 Antibody) at dilution 1/60 (Original
 magnification: ×200)



Immunohistochemistry of paraffin-embedded Human liver cancer tissue using TA368784 (COL2A1 Antibody) at dilution 1/60, treated with fusion protein. (Original magnification: $\times 200$)



Immunohistochemistry of paraffin-embedded Human gastric cancer tissue using TA368784 (COL2A1 Antibody) at dilution 1/60 (Original magnification: $\times 200$)



Immunohistochemistry of paraffin-embedded Human gastric cancer tissue using TA368784 (COL2A1 Antibody) at dilution 1/60, treated with fusion protein. (Original magnification: $\times 200$)