

Product datasheet for **TA368775S**

CD66b (CEACAM8) Rabbit Polyclonal Antibody

Product data:

Product Type:	Primary Antibodies
Applications:	IHC, WB
Recommended Dilution:	WB: 200-1000 WB positive control: A431 and HepG2 cell lysates IHC: 50-100 Positive control: Human cervical cancer Predicted cell location: Cytoplasm and Cell membrane
Reactivity:	Human
Host:	Rabbit
Isotype:	IgG
Clonality:	Polyclonal
Immunogen:	Fusion protein of human CEACAM8
Formulation:	pH7.4 PBS, 0.05% NaN ₃ , 40% Glycerol
Purification:	Antigen affinity purification
Conjugation:	Unconjugated
Storage:	Store at -20°C.
Stability:	1 year
Predicted Protein Size:	38 kDa
Gene Name:	carcinoembryonic antigen related cell adhesion molecule 8
Database Link:	Entrez Gene 1088 Human P31997



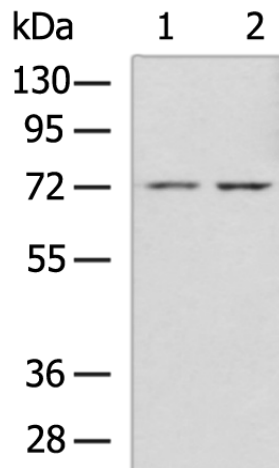
[View online »](#)

Background:

Cell surface glycoprotein that plays a role in cell adhesion in a calcium-independent manner (PubMed:8776764, PubMed:2022629, PubMed:11590190). Mediates heterophilic cell adhesion with other carcinoembryonic antigen-related cell adhesion molecules, such as CEACAM6 (PubMed:8776764, PubMed:2022629, PubMed:11590190). Heterophilic interaction with CEACAM8 occurs in activated neutrophils (PubMed:8776764). By probing white blood cell cDNA libraries with tumor nonspecific crossreacting antigen, Arakawa et al. (1990) isolated a cDNA encoding CEACAM8, which they called NCA-W272. The deduced 349-amino acid protein contains 11 potential N-glycosylation sites and 4 cysteines expected to form 2 intramolecular disulfide linkages. It also has a signal peptide and several domains similar to those of other CEA family proteins, such as CEACAM1 (109770). Immunoblot analysis showed expression of a 70-kD protein that was reduced to a 37-kD major protein and a 34-kD minor protein in the presence of a glycosylation inhibitor.

Synonyms:

CD66b; CD67; CGM6; NCA-95

Product images:

Gel: 8%SDS-PAGE

Lysate: 40 µg

Lane 1-2: A431 and HepG2 cell lysates

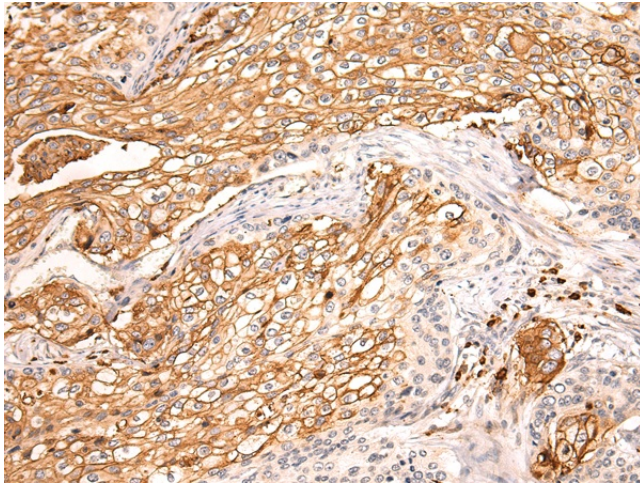
Primary antibody: [TA368775] (CEACAM8

Antibody) at dilution 1/500

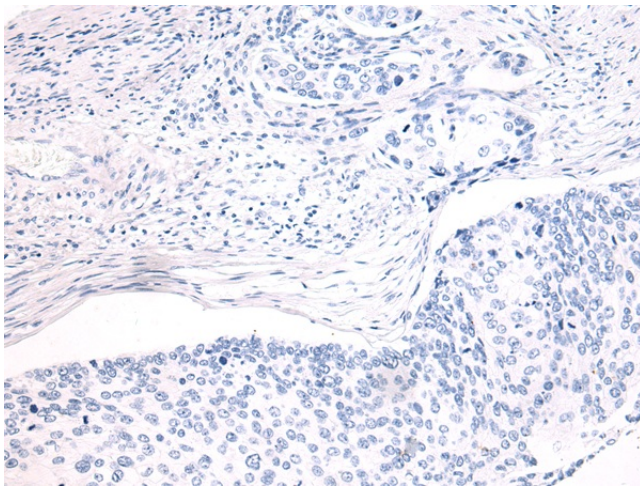
Secondary antibody: Goat anti rabbit IgG at

1/5000 dilution

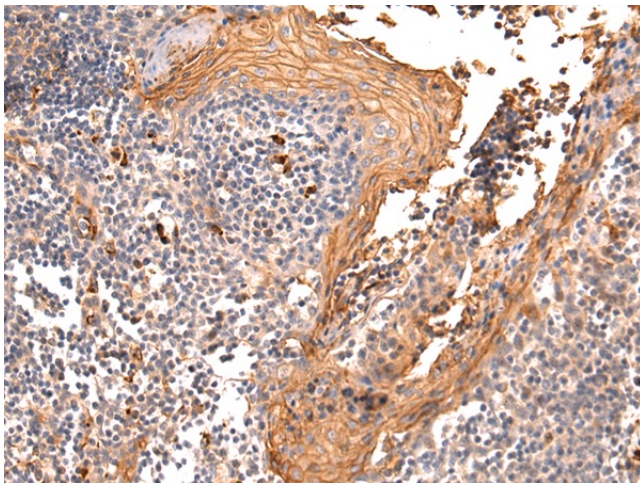
Exposure time: 2 minutes



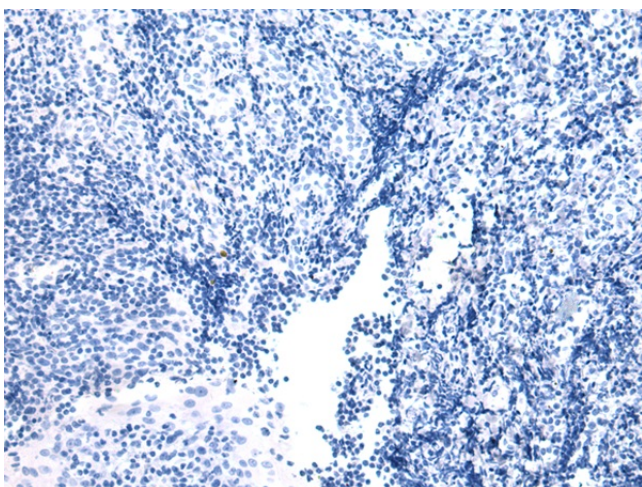
Immunohistochemistry of paraffin-embedded Human cervical cancer tissue using [TA368775] (CEACAM8 Antibody) at dilution 1/50 (Original magnification: $\times 200$)



Immunohistochemistry of paraffin-embedded Human cervical cancer tissue using [TA368775] (CEACAM8 Antibody) at dilution 1/50, treated with fusion protein. (Original magnification: $\times 200$)



Immunohistochemistry of paraffin-embedded Human tonsil tissue using [TA368775] (CEACAM8 Antibody) at dilution 1/50 (Original magnification: $\times 200$)



Immunohistochemistry of paraffin-embedded Human tonsil tissue using [TA368775] (CEACAM8 Antibody) at dilution 1/50, treated with fusion protein. (Original magnification: ×200)