

Product datasheet for **TA368756**

ATF3 Rabbit Polyclonal Antibody

Product data:

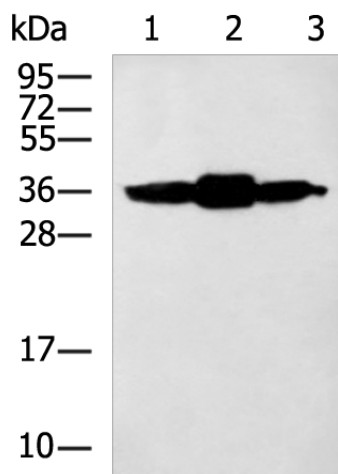
| | |
|-------------------------|--|
| Product Type: | Primary Antibodies |
| Applications: | IHC, WB |
| Recommended Dilution: | WB: 1000-5000 WB positive control: HepG2, Hela, 293T cell lysates IHC: 100-200 Positive control: Human liver cancer Predicted cell location: Nucleus |
| Reactivity: | Human, Mouse, Rat |
| Host: | Rabbit |
| Isotype: | IgG |
| Clonality: | Polyclonal |
| Immunogen: | Fusion protein of human ATF3 |
| Formulation: | pH7.4 PBS, 0.05% NaN ₃ , 40% Glycerol |
| Concentration: | lot specific |
| Purification: | Antigen affinity purification |
| Conjugation: | Unconjugated |
| Storage: | Store at -20°C. |
| Stability: | 1 year |
| Predicted Protein Size: | 21 kDa |
| Gene Name: | activating transcription factor 3 |
| Database Link: | Entrez Gene 467 Human P18847 |
| Background: | This gene encodes a member of the mammalian activation transcription factor/cAMP responsive element-binding (CREB) protein family of transcription factors. This gene is induced by a variety of signals, including many of those encountered by cancer cells, and is involved in the complex process of cellular stress response. Multiple transcript variants encoding different isoforms have been found for this gene. It is possible that alternative splicing of this gene may be physiologically important in the regulation of target genes. |



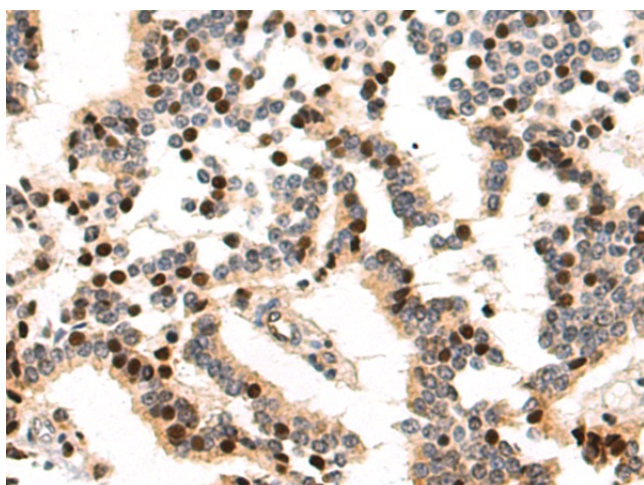
[View online »](#)

Synonyms: ATF3deltaZip2; ATF3deltaZip2c; ATF3deltaZip3; OTTHUMP00000034890

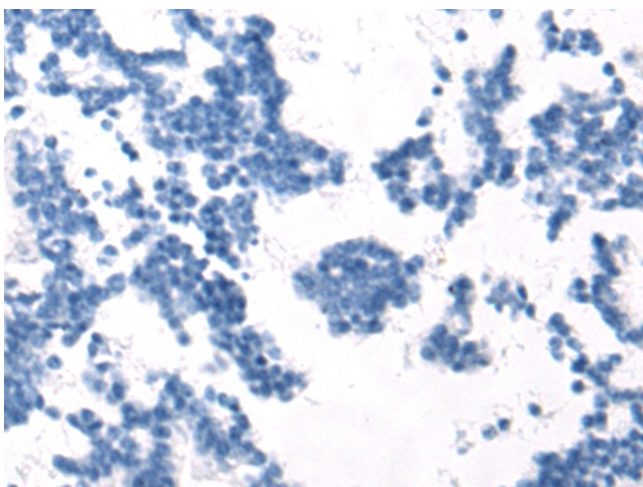
Product images:



Gel: 12%SDS-PAGE
 Lysate: 40 µg
 Lane 1-3: HepG2
 Hela
 293T cell lysates
 Primary antibody: TA368756 (ATF3 Antibody) at dilution 1/900
 Secondary antibody: Goat anti rabbit IgG at 1/5000 dilution
 Exposure time: 1 minute



Immunohistochemistry of paraffin-embedded Human liver cancer tissue using TA368756 (ATF3 Antibody) at dilution 1/120 (Original magnification: ×200)



Immunohistochemistry of paraffin-embedded Human liver cancer tissue using TA368756 (ATF3 Antibody) at dilution 1/120, treated with fusion protein. (Original magnification: $\times 200$)