

## Product datasheet for **TA368731S**

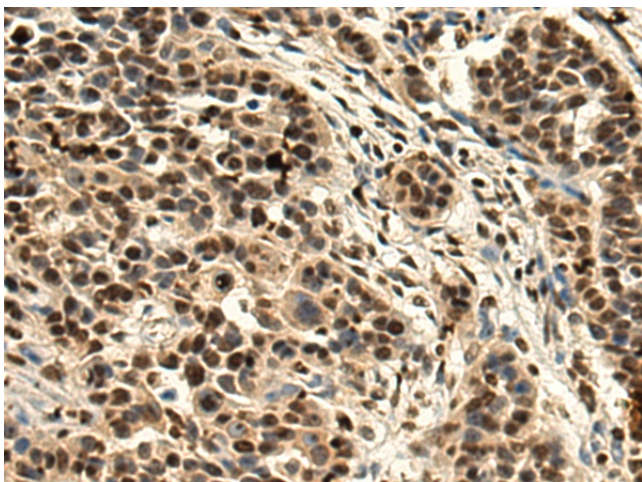
### PCP4 Rabbit Polyclonal Antibody

#### Product data:

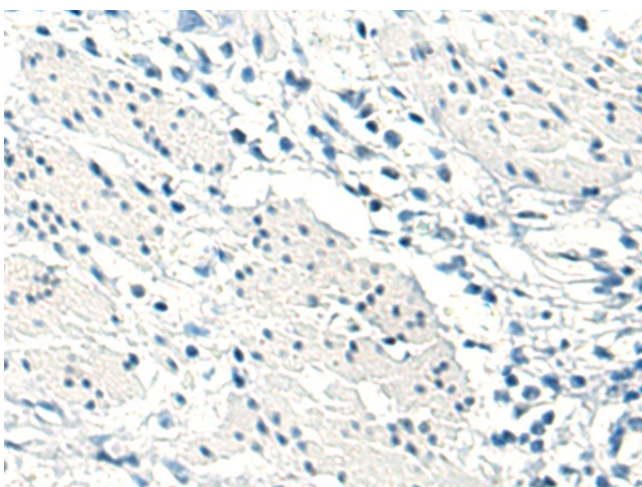
Product Type:	Primary Antibodies
Applications:	IHC
Recommended Dilution:	IHC: 200-400 Positive control: Human thyroid cancer Predicted cell location: Nucleus
Reactivity:	Human, Mouse, Rat
Host:	Rabbit
Isotype:	IgG
Clonality:	Polyclonal
Immunogen:	Fusion protein of human PCP4
Formulation:	pH7.4 PBS, 0.05% NaN3, 40% Glycerol
Purification:	Antigen affinity purification
Conjugation:	Unconjugated
Storage:	Store at -20°C.
Stability:	1 year
Gene Name:	Purkinje cell protein 4
Database Link:	<a href="#">Entrez Gene 5121 Human P48539</a>
Background:	Functions as a modulator of calcium-binding by calmodulin. Thereby, regulates calmodulin activity and the different processes it controls (PubMed:19106096, PubMed:23204517, PubMed:27876793). For instance, may play a role in neuronal differentiation through activation of calmodulin-dependent kinase signaling pathways (PubMed:21491429).
Synonyms:	PEP-19



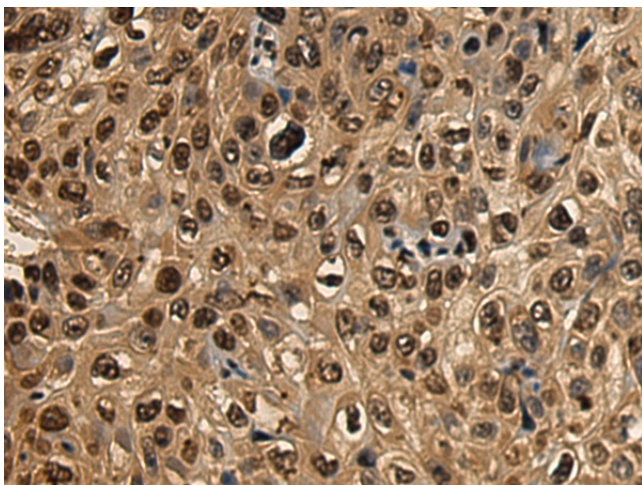
[View online »](#)

**Product images:**

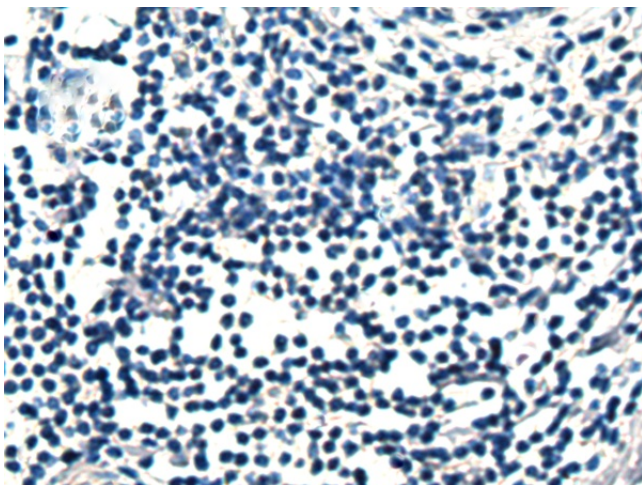
Immunohistochemistry of paraffin-embedded Human thyroid cancer tissue using [TA368731] (PCP4 Antibody) at dilution 1/160 (Original magnification:  $\times 200$ )



Immunohistochemistry of paraffin-embedded Human thyroid cancer tissue using [TA368731] (PCP4 Antibody) at dilution 1/160, treated with fusion protein. (Original magnification:  $\times 200$ )



Immunohistochemistry of paraffin-embedded Human esophagus cancer tissue using [TA368731] (PCP4 Antibody) at dilution 1/160 (Original magnification:  $\times 200$ )



Immunohistochemistry of paraffin-embedded Human esophagus cancer tissue using [TA368731] (PCP4 Antibody) at dilution 1/160, treated with fusion protein. (Original magnification:  $\times 200$ )