

## Product datasheet for **TA368725S**

### 14 3 3 eta (YWHAH) Rabbit Polyclonal Antibody

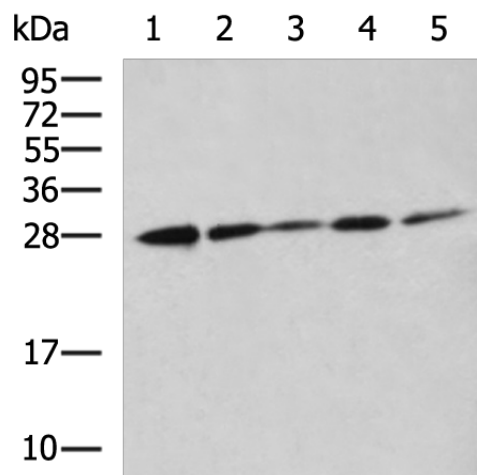
#### Product data:

Product Type:	Primary Antibodies
Applications:	IHC, WB
Recommended Dilution:	WB: 500-2000 WB positive control: NIH/3T3, HeLa, K562, 231, Raji cell lysates IHC: 50-200 Positive control: Human esophagus cancer Predicted cell location: Cytoplasm
Reactivity:	Human, Mouse, Rat
Host:	Rabbit
Isotype:	IgG
Clonality:	Polyclonal
Immunogen:	Synthetic peptide of human YWHAH
Formulation:	pH7.4 PBS, 0.05% NaN <sub>3</sub> , 40% Glycerol
Purification:	Antigen affinity purification
Conjugation:	Unconjugated
Storage:	Store at -20°C.
Stability:	1 year
Predicted Protein Size:	28 kDa
Gene Name:	tyrosine 3-monooxygenase/tryptophan 5-monooxygenase activation protein eta
Database Link:	<a href="#">Entrez Gene 7533 Human Q04917</a>
Background:	This gene product belongs to the 14-3-3 family of proteins which mediate signal transduction by binding to phosphoserine-containing proteins. This highly conserved protein family is found in both plants and mammals, and this protein is 99% identical to the mouse, rat and bovine orthologs. This gene contains a 7 bp repeat sequence in its 5' UTR, and changes in the number of this repeat have been associated with early-onset schizophrenia and psychotic bipolar disorder.
Synonyms:	YWHA1

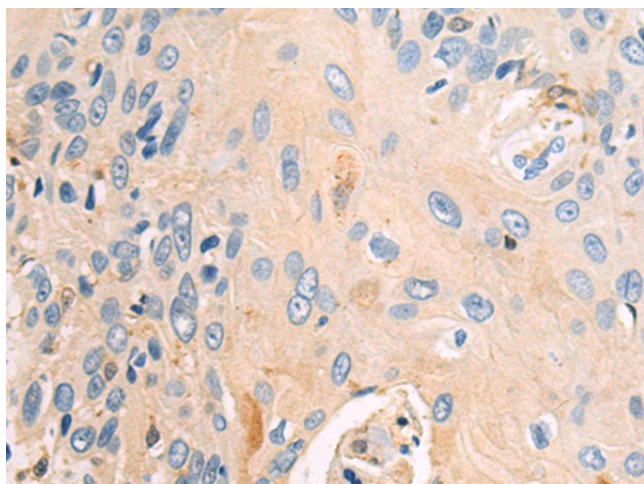


[View online »](#)

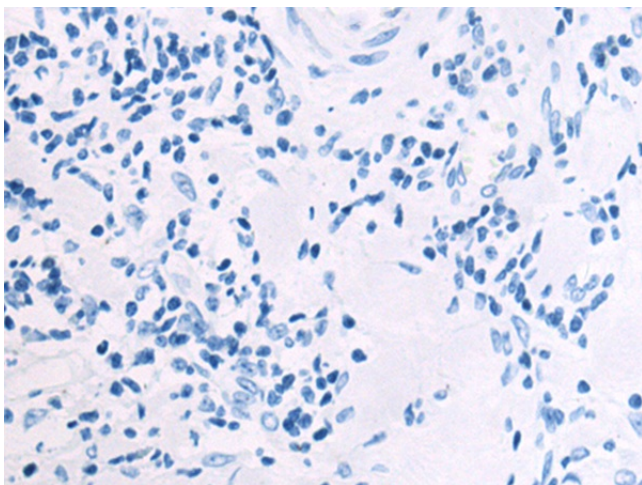
## Product images:



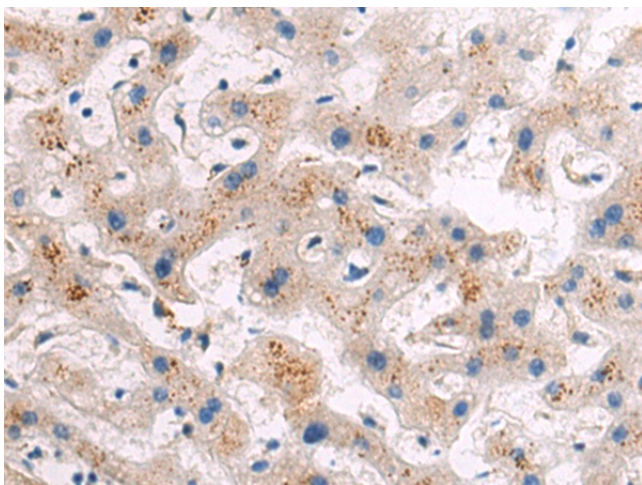
Gel: 12%SDS-PAGE  
Lysate: 40  $\mu$ g  
Lane 1-5: NIH/3T3  
Hela  
K562  
231  
Raji cell lysates  
Primary antibody: [TA368725] (YWHAH Antibody)  
at dilution 1/500  
Secondary antibody: Goat anti rabbit IgG at  
1/5000 dilution  
Exposure time: 1 minute



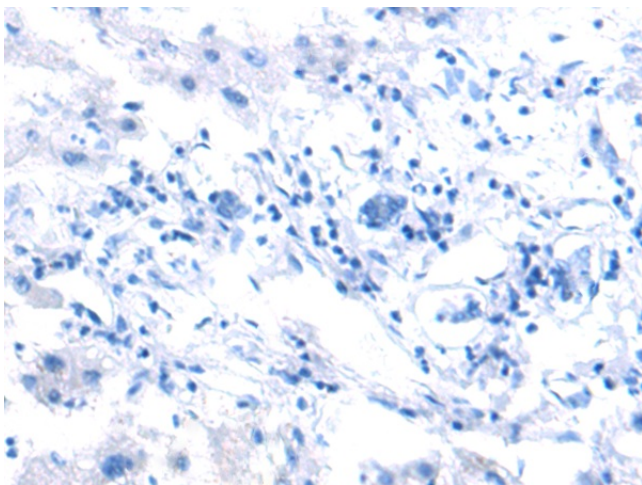
Immunohistochemistry of paraffin-embedded  
Human esophagus cancer tissue using  
[TA368725] (YWHAH Antibody) at dilution 1/50  
(Original magnification:  $\times$ 200)



Immunohistochemistry of paraffin-embedded Human esophagus cancer tissue using [TA368725] (YWHAH Antibody) at dilution 1/50, treated with synthetic peptide. (Original magnification:  $\times 200$ )



Immunohistochemistry of paraffin-embedded Human liver cancer tissue using [TA368725] (YWHAH Antibody) at dilution 1/50 (Original magnification:  $\times 200$ )



Immunohistochemistry of paraffin-embedded Human liver cancer tissue using [TA368725] (YWHAH Antibody) at dilution 1/50, treated with synthetic peptide. (Original magnification:  $\times 200$ )