

Product datasheet for **TA368717**

SLC47A1 Rabbit Polyclonal Antibody

Product data:

Product Type:	Primary Antibodies
Applications:	IHC, WB
Recommended Dilution:	WB: 500-2000 WB positive control: 293T, Hela, HepG2, A549 cell lysates IHC: 25-50 Positive control: Human prostate cancer Predicted cell location: Cell membrane
Reactivity:	Human
Host:	Rabbit
Isotype:	IgG
Clonality:	Polyclonal
Immunogen:	Synthetic peptide of human SLC47A1
Formulation:	pH7.4 PBS, 0.05% NaN ₃ , 40% Glycerol
Concentration:	lot specific
Purification:	Antigen affinity purification
Conjugation:	Unconjugated
Storage:	Store at -20°C.
Stability:	1 year
Predicted Protein Size:	62 kDa
Gene Name:	solute carrier family 47 member 1
Database Link:	Entrez Gene 55244 Human Q96FL8



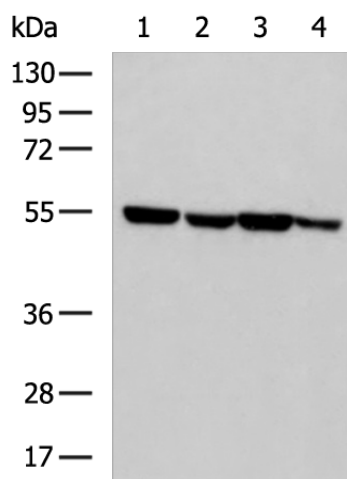
[View online »](#)

Background:

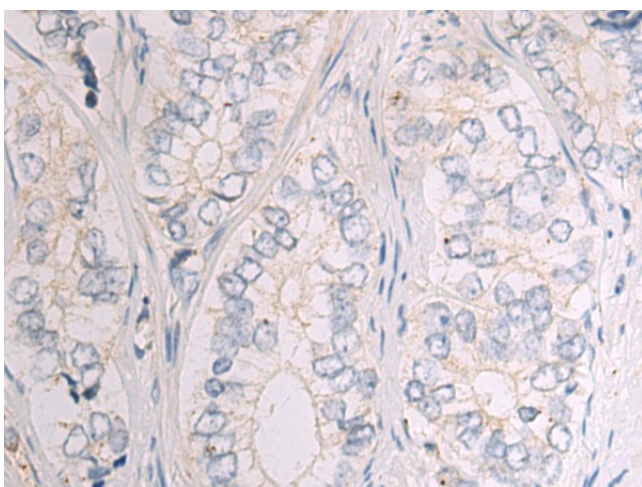
Solute transporter for tetraethylammonium (TEA), 1-methyl-4-phenylpyridinium (MPP), cimetidine, N-methylnicotinamide (NMN), metformin, creatinine, guanidine, procainamide, topotecan, estrone sulfate, acyclovir, ganciclovir and also the zwitterionic cephalosporin, cephalexin and cephradine. Seems to also play a role in the uptake of oxaliplatin (a new platinum anticancer agent). Able to transport paraquat (PQ or N,N-dimethyl-4,4'-bipyridinium); a widely used herbicide. Responsible for the secretion of cationic drugs across the brush border membranes. This gene is located within the Smith-Magenis syndrome region on chromosome 17.

Synonyms:

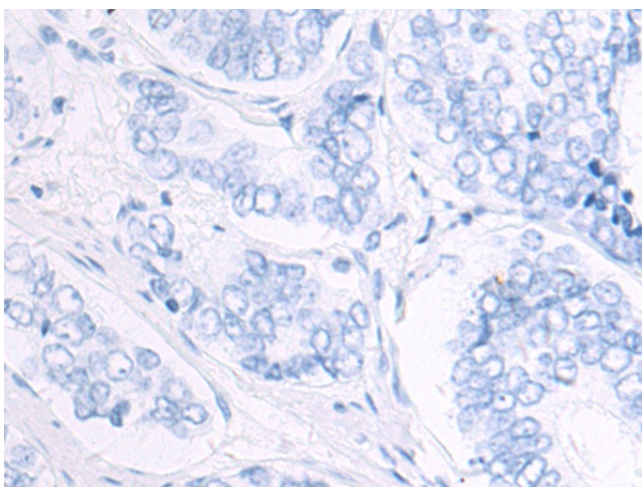
FLJ10847; hMATE-1; MATE-1; MATE1; MGC64822

Product images:


Gel: 8%SDS-PAGE
Lysate: 40 µg
Lane 1-4: 293T
HeLa
HepG2
A549 cell lysates
Primary antibody: TA368717 (SLC47A1 Antibody)
at dilution 1/400
Secondary antibody: Goat anti rabbit IgG at
1/5000 dilution
Exposure time: 10 seconds



Immunohistochemistry of paraffin-embedded
Human prostate cancer tissue using TA368717
(SLC47A1 Antibody) at dilution 1/50 (Original
magnification: x200)



Immunohistochemistry of paraffin-embedded Human prostate cancer tissue using TA368717 (SLC47A1 Antibody) at dilution 1/50, treated with synthetic peptide. (Original magnification: ×200)