

Product datasheet for **TA368715S**

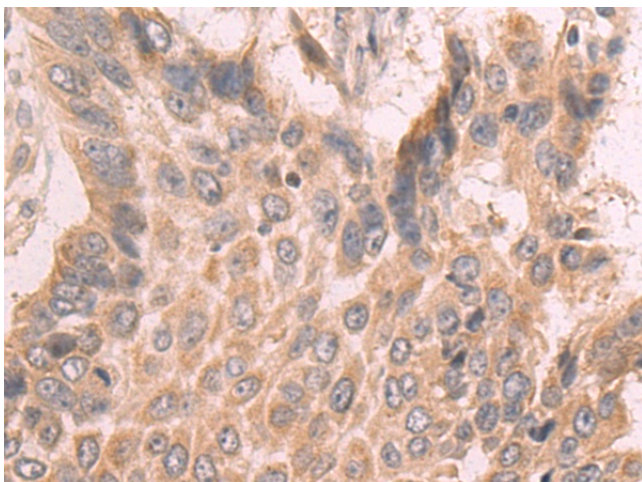
SLC35B1 Rabbit Polyclonal Antibody

Product data:

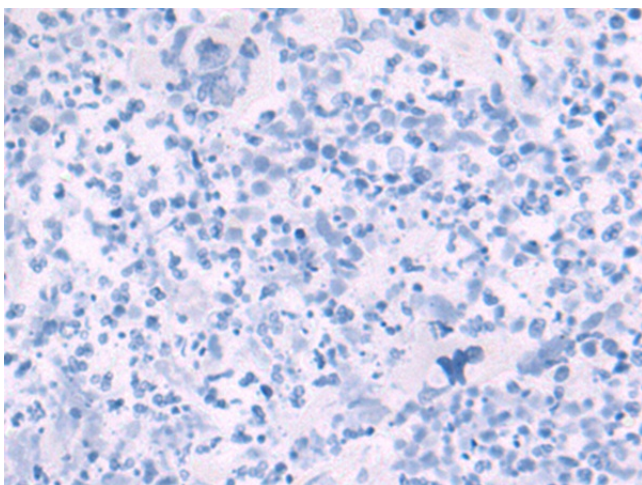
Product Type:	Primary Antibodies
Applications:	IHC
Recommended Dilution:	IHC: 50-200 Positive control: Human esophagus cancer Predicted cell location: Cytoplasm
Reactivity:	Human, Mouse, Rat
Host:	Rabbit
Isotype:	IgG
Clonality:	Polyclonal
Immunogen:	Synthetic peptide of human SLC35B1
Formulation:	pH7.4 PBS, 0.05% NaN ₃ , 40% Glycerol
Purification:	Antigen affinity purification
Conjugation:	Unconjugated
Storage:	Store at -20°C.
Stability:	1 year
Gene Name:	solute carrier family 35 member B1
Database Link:	Entrez Gene 10237 Human P78383
Background:	This gene encodes a nucleotide sugar transporter which is a member of solute carrier family 35. The transporters in this family are highly conserved hydrophobic proteins with multiple transmembrane domains. Alternative splicing results in multiple transcript variants encoding different isoforms.
Synonyms:	hUGTrel1; UGTREL1



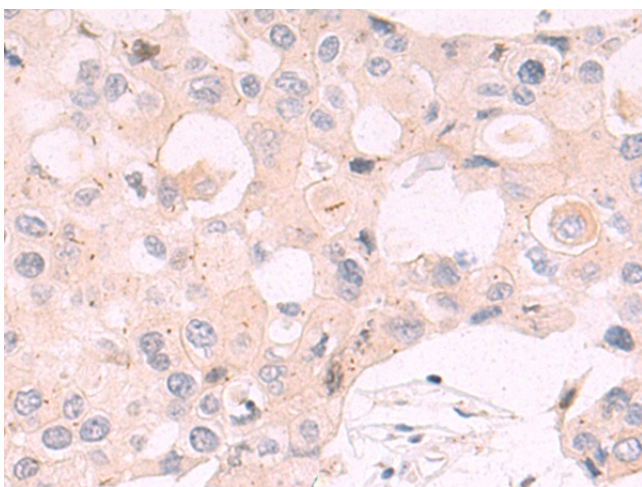
[View online »](#)

Product images:

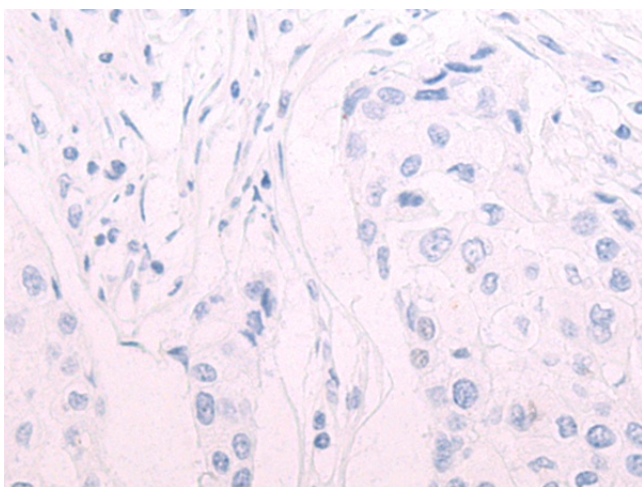
Immunohistochemistry of paraffin-embedded Human esophagus cancer tissue using [TA368715] (SLC35B1 Antibody) at dilution 1/60 (Original magnification: ×200)



Immunohistochemistry of paraffin-embedded Human esophagus cancer tissue using [TA368715] (SLC35B1 Antibody) at dilution 1/60, treated with synthetic peptide. (Original magnification: ×200)



Immunohistochemistry of paraffin-embedded Human breast cancer tissue using [TA368715] (SLC35B1 Antibody) at dilution 1/60 (Original magnification: ×200)



Immunohistochemistry of paraffin-embedded Human breast cancer tissue using [TA368715] (SLC35B1 Antibody) at dilution 1/60, treated with synthetic peptide. (Original magnification: ×200)