

Product datasheet for **TA368705**

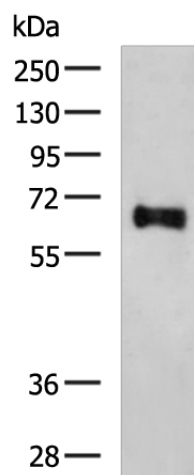
SLC24A4 Rabbit Polyclonal Antibody

Product data:

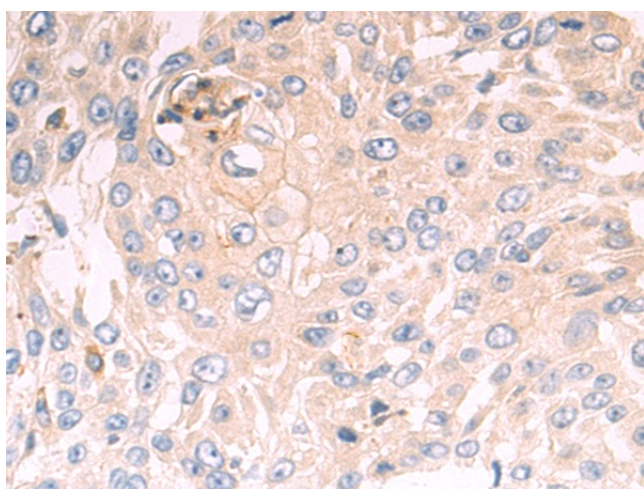
Product Type:	Primary Antibodies
Applications:	IHC, WB
Recommended Dilution:	WB: 500-2000 WB positive control: Mouse brain tissue lysate IHC: 50-100 Positive control: Human esophagus cancer Predicted cell location: Cytoplasm and Cell membrane
Reactivity:	Human, Mouse
Host:	Rabbit
Isotype:	IgG
Clonality:	Polyclonal
Immunogen:	Synthetic peptide of human SLC24A4
Formulation:	pH7.4 PBS, 0.05% NaN ₃ , 40% Glycerol
Concentration:	lot specific
Purification:	Antigen affinity purification
Conjugation:	Unconjugated
Storage:	Store at -20°C.
Stability:	1 year
Predicted Protein Size:	69 kDa
Gene Name:	solute carrier family 24 member 4
Database Link:	Entrez Gene 123041 Human Q8NFF2
Background:	This gene encodes a member of the potassium-dependent sodium/calcium exchanger protein family. Alternative splicing results in multiple transcript variants.
Synonyms:	FLJ38852; NCKX4; SHEP6; SLC24A2



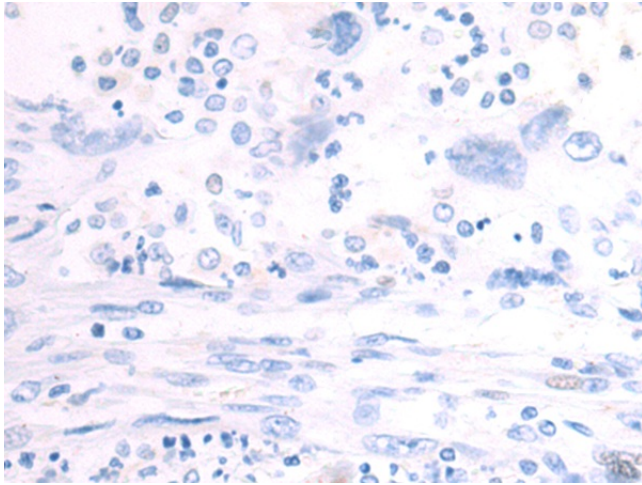
[View online »](#)

Product images:

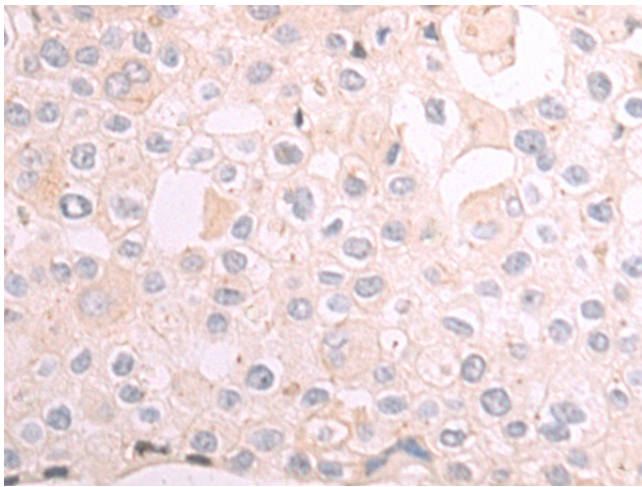
Gel: 8%SDS-PAGE
Lysate: 40 μ g
Lane: Mouse brain tissue lysate
Primary antibody: TA368705 (SLC24A4 Antibody)
at dilution 1/400
Secondary antibody: Goat anti rabbit IgG at
1/5000 dilution
Exposure time: 3 minutes



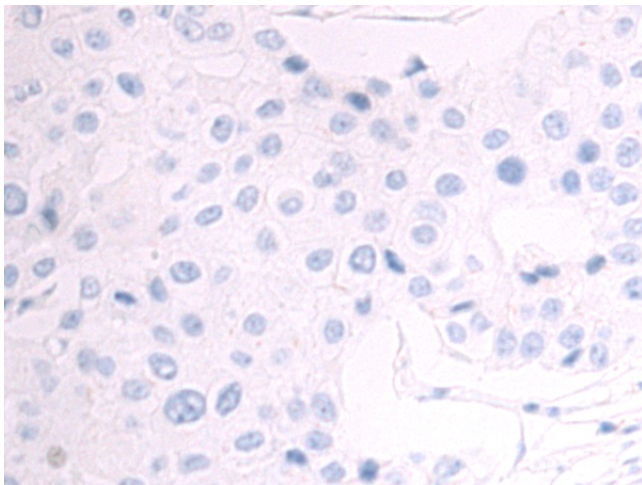
Immunohistochemistry of paraffin-embedded
Human esophagus cancer tissue using TA368705
(SLC24A4 Antibody) at dilution 1/50 (Original
magnification: \times 200)



Immunohistochemistry of paraffin-embedded Human esophagus cancer tissue using TA368705 (SLC24A4 Antibody) at dilution 1/50, treated with synthetic peptide. (Original magnification: ×200)



Immunohistochemistry of paraffin-embedded Human breast cancer tissue using TA368705 (SLC24A4 Antibody) at dilution 1/50 (Original magnification: ×200)



Immunohistochemistry of paraffin-embedded Human breast cancer tissue using TA368705 (SLC24A4 Antibody) at dilution 1/50, treated with synthetic peptide. (Original magnification: ×200)