

Product datasheet for **TA368704**

MRP2 (ABCC2) Rabbit Polyclonal Antibody

Product data:

Product Type:	Primary Antibodies
Applications:	WB
Recommended Dilution:	WB: 500-2000 WB positive control: Human rectum tissue lysate
Reactivity:	Human
Host:	Rabbit
Isotype:	IgG
Clonality:	Polyclonal
Immunogen:	Synthetic peptide of human ABCC2
Formulation:	pH7.4 PBS, 0.05% NaN ₃ , 40% Glycerol
Concentration:	lot specific
Purification:	Antigen affinity purification
Conjugation:	Unconjugated
Storage:	Store at -20°C.
Stability:	1 year
Predicted Protein Size:	174 kDa
Gene Name:	ATP binding cassette subfamily C member 2
Database Link:	Entrez Gene 1244 Human Q92887



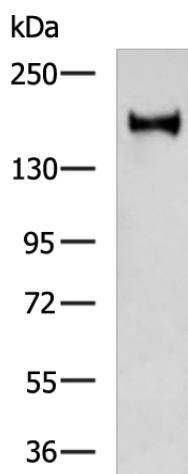
[View online »](#)

Background:

The protein encoded by this gene is a member of the superfamily of ATP-binding cassette (ABC) transporters. ABC proteins transport various molecules across extra- and intra-cellular membranes. ABC genes are divided into seven distinct subfamilies (ABC1, MDR/TAP, MRP, ALD, OABP, GCN20, White). This protein is a member of the MRP subfamily which is involved in multi-drug resistance. This protein is expressed in the canalicular (apical) part of the hepatocyte and functions in biliary transport. Substrates include anticancer drugs such as vinblastine; therefore, this protein appears to contribute to drug resistance in mammalian cells. Several different mutations in this gene have been observed in patients with Dubin-Johnson syndrome (DJS), an autosomal recessive disorder characterized by conjugated hyperbilirubinemia.

Synonyms:

ABC30; CMOAT; CMOAT1; cMRP; DJS; KIAA1010; MRP2

Product images:

Gel: 6%SDS-PAGE
Lysate: 20 μ g
Lane: Human rectum tissue lysate
Primary antibody: TA368704 (ABCC2 Antibody) at dilution 1/400
Secondary antibody: Goat anti rabbit IgG at 1/5000 dilution
Exposure time: 40 seconds