

Product datasheet for **TA368699S**

PRKACB Rabbit Polyclonal Antibody

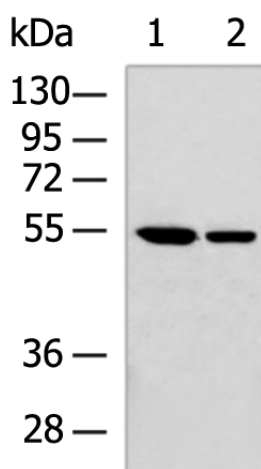
Product data:

Product Type:	Primary Antibodies
Applications:	IHC, WB
Recommended Dilution:	WB: 500-2000 WB positive control: Mouse testis tissue, Jurkat cell lysates IHC: 50-200 Positive control: Human cervical cancer Predicted cell location: Cytoplasm
Reactivity:	Human, Mouse, Rat
Host:	Rabbit
Isotype:	IgG
Clonality:	Polyclonal
Immunogen:	Synthetic peptide of human PRKACB
Formulation:	pH7.4 PBS, 0.05% NaN ₃ , 40% Glycerol
Purification:	Antigen affinity purification
Conjugation:	Unconjugated
Storage:	Store at -20°C.
Stability:	1 year
Predicted Protein Size:	41 kDa
Gene Name:	protein kinase cAMP-activated catalytic subunit beta
Database Link:	Entrez Gene 5567 Human P22694
Background:	The protein encoded by this gene is a member of the serine/threonine protein kinase family. The encoded protein is a catalytic subunit of cAMP (cyclic AMP)-dependent protein kinase, which mediates signalling through cAMP. cAMP signaling is important to a number of processes, including cell proliferation and differentiation. Multiple alternatively spliced transcript variants encoding distinct isoforms have been observed.
Synonyms:	DKFZp78112452; MGC9320; MGC41879; PKACb

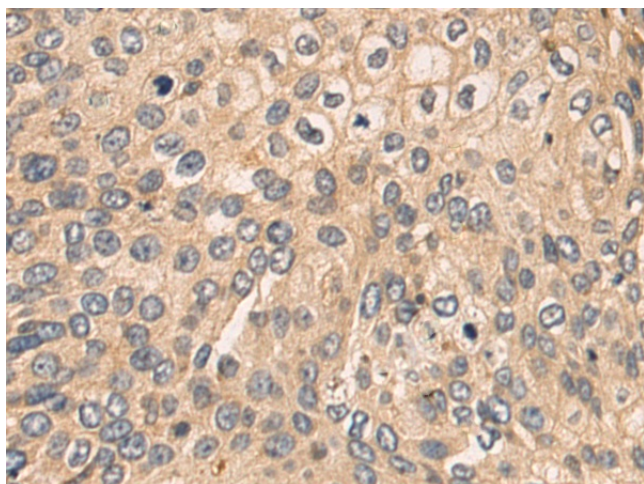


[View online »](#)

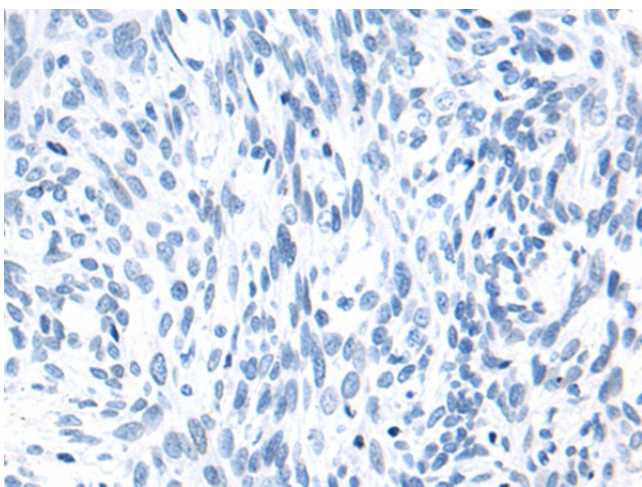
Product images:



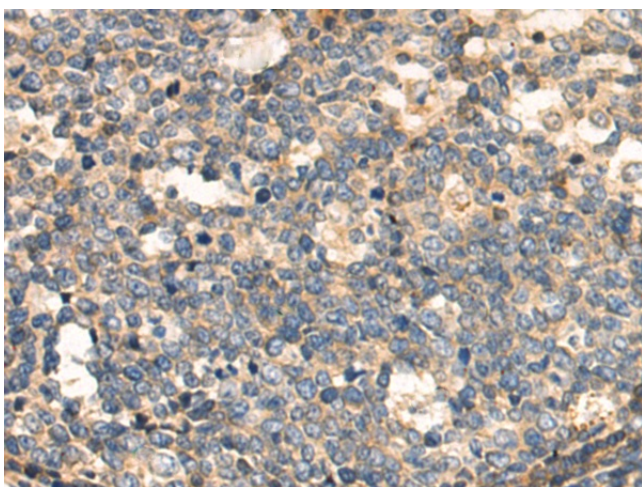
Gel: 8%SDS-PAGE
Lysate: 40 μ g
Lane 1-2: Mouse testis tissue
Jurkat cell lysates
Primary antibody: [TA368699] (PRKACB Antibody)
at dilution 1/400
Secondary antibody: Goat anti rabbit IgG at
1/5000 dilution
Exposure time: 5 seconds



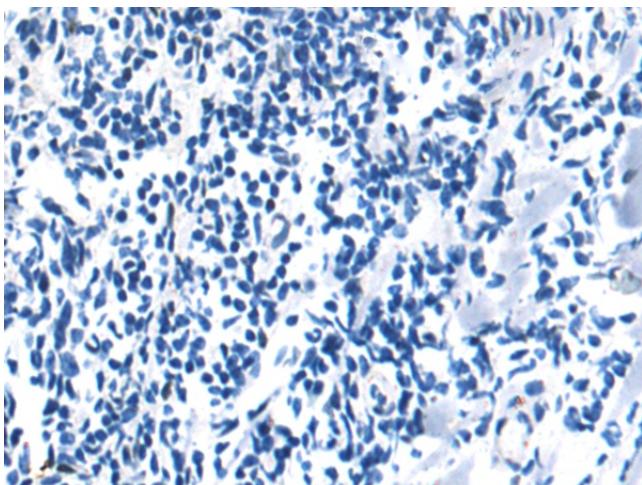
Immunohistochemistry of paraffin-embedded
Human cervical cancer tissue using [TA368699]
(PRKACB Antibody) at dilution 1/50 (Original
magnification: \times 200)



Immunohistochemistry of paraffin-embedded Human cervical cancer tissue using [TA368699] (PRKACB Antibody) at dilution 1/50, treated with synthetic peptide. (Original magnification: $\times 200$)



Immunohistochemistry of paraffin-embedded Human tonsil tissue using [TA368699] (PRKACB Antibody) at dilution 1/50 (Original magnification: $\times 200$)



Immunohistochemistry of paraffin-embedded Human tonsil tissue using [TA368699] (PRKACB Antibody) at dilution 1/50, treated with synthetic peptide. (Original magnification: $\times 200$)