

## Product datasheet for **TA368698S**

### PEX14 Rabbit Polyclonal Antibody

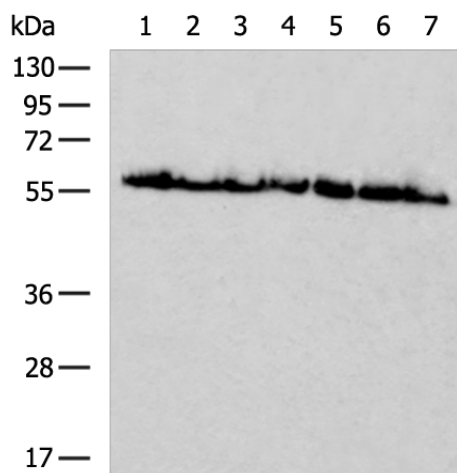
#### Product data:

Product Type:	Primary Antibodies
Applications:	IHC, WB
Recommended Dilution:	WB: 500-2000 WB positive control: 293T, A431, HeLa, NIH/3T3, RAW264.7, C2C12, SKOV3 cell lysates IHC: 50-200 Positive control: Human liver cancer Predicted cell location: Cytoplasm
Reactivity:	Human, Mouse, Rat
Host:	Rabbit
Isotype:	IgG
Clonality:	Polyclonal
Immunogen:	Synthetic peptide of human PEX14
Formulation:	pH7.4 PBS, 0.05% NaN <sub>3</sub> , 40% Glycerol
Purification:	Antigen affinity purification
Conjugation:	Unconjugated
Storage:	Store at -20°C.
Stability:	1 year
Predicted Protein Size:	41 kDa
Gene Name:	peroxisomal biogenesis factor 14
Database Link:	<a href="#">Entrez Gene 5195 Human O75381</a>
Background:	This gene encodes an essential component of the peroxisomal import machinery. The protein is integrated into peroxisome membranes with its C-terminus exposed to the cytosol, and interacts with the cytosolic receptor for proteins containing a PTS1 peroxisomal targeting signal. The protein also functions as a transcriptional corepressor and interacts with a histone deacetylase. A mutation in this gene results in one form of Zellweger syndrome.
Synonyms:	dj734G22.2; MGC12767; NAPP2; peroxin-14; Pex14p



[View online »](#)

## Product images:



Gel: 8%SDS-PAGE

Lysate: 40 µg

Lane 1-7: 293T

A431

HeLa

NIH/3T3

RAW264.7

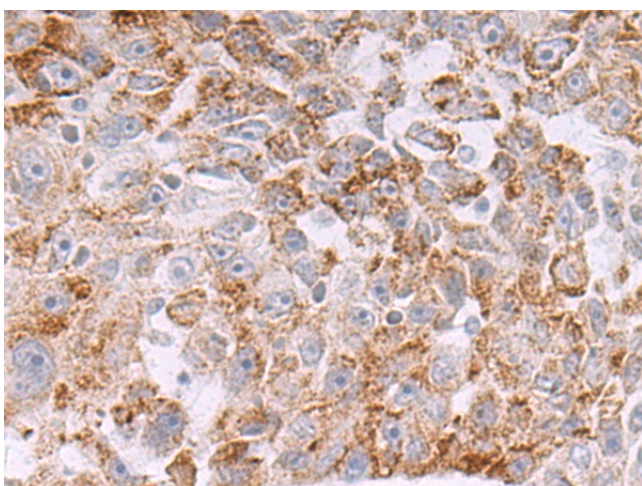
C2C12

SKOV3 cell lysates

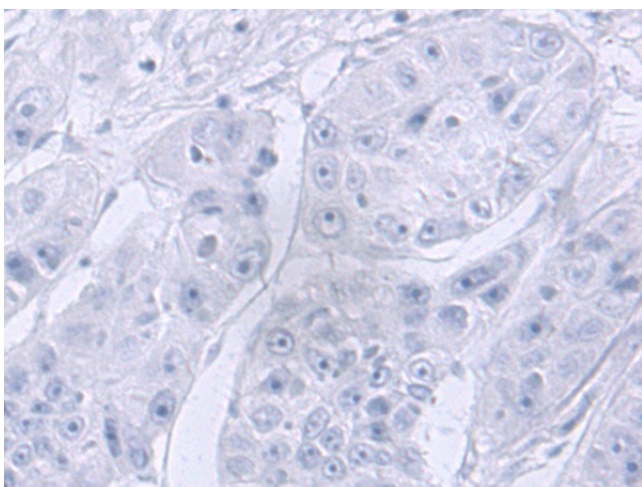
Primary antibody: [TA368698] (PEX14 Antibody)  
at dilution 1/200

Secondary antibody: Goat anti rabbit IgG at  
1/5000 dilution

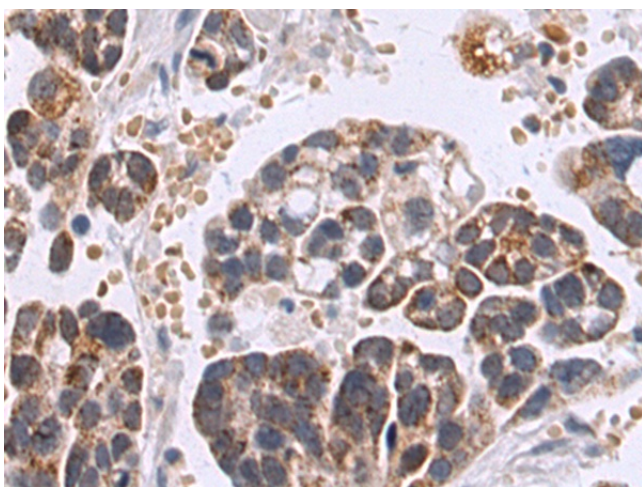
Exposure time: 15 seconds



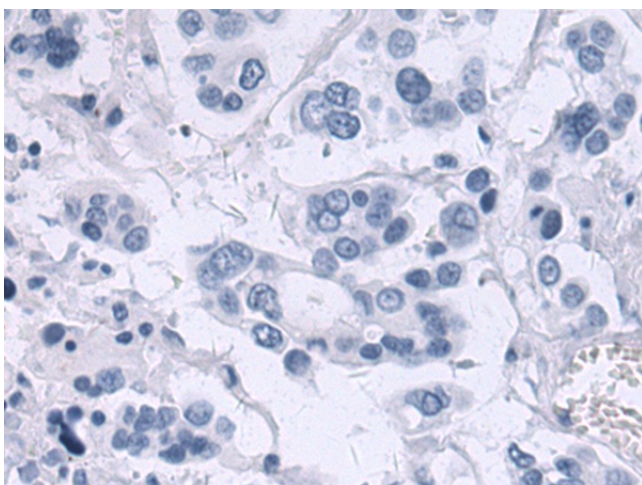
Immunohistochemistry of paraffin-embedded  
Human liver cancer tissue using [TA368698]  
(PEX14 Antibody) at dilution 1/50 (Original  
magnification: ×200)



Immunohistochemistry of paraffin-embedded Human liver cancer tissue using [TA368698] (PEX14 Antibody) at dilution 1/50, treated with synthetic peptide. (Original magnification:  $\times 200$ )



Immunohistochemistry of paraffin-embedded Human colorectal cancer tissue using [TA368698] (PEX14 Antibody) at dilution 1/50 (Original magnification:  $\times 200$ )



Immunohistochemistry of paraffin-embedded Human colorectal cancer tissue using [TA368698] (PEX14 Antibody) at dilution 1/50, treated with synthetic peptide. (Original magnification:  $\times 200$ )