

Product datasheet for **TA368692S**

STEAP3 Rabbit Polyclonal Antibody

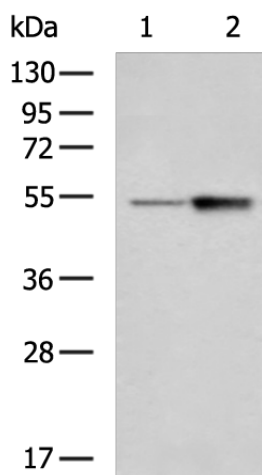
Product data:

Product Type:	Primary Antibodies
Applications:	IHC, WB
Recommended Dilution:	WB: 500-2000 WB positive control: Hela and A172 cell lysates IHC: 50-200 Positive control: Human cervical cancer Predicted cell location: Cytoplasm and Cell membrane
Reactivity:	Human, Mouse, Rat
Host:	Rabbit
Isotype:	IgG
Clonality:	Polyclonal
Immunogen:	Synthetic peptide of human STEAP3
Formulation:	pH7.4 PBS, 0.05% NaN ₃ , 40% Glycerol
Purification:	Antigen affinity purification
Conjugation:	Unconjugated
Storage:	Store at -20°C.
Stability:	1 year
Predicted Protein Size:	55 kDa
Gene Name:	STEAP3 metalloreductase
Database Link:	Entrez Gene 55240 Human Q658P3
Background:	This gene encodes a multipass membrane protein that functions as an iron transporter. The encoded protein can reduce both iron (Fe ³⁺) and copper (Cu ²⁺) cations. This protein may mediate downstream responses to p53, including promoting apoptosis. Deficiency in this gene can cause anemia. Alternative splicing results in multiple transcript variants.
Synonyms:	1010001D01Rik; dudlin-2; Dudulin-2; hpHyde; hTSAP6; OTTHUMP00000162093; pHyde; STMP3; TSAP6

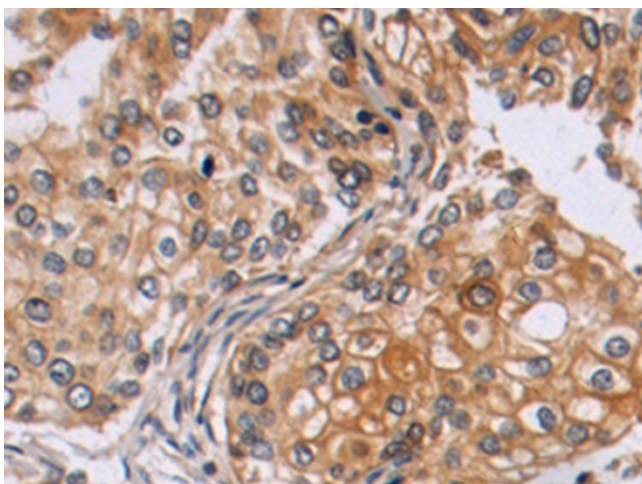


[View online »](#)

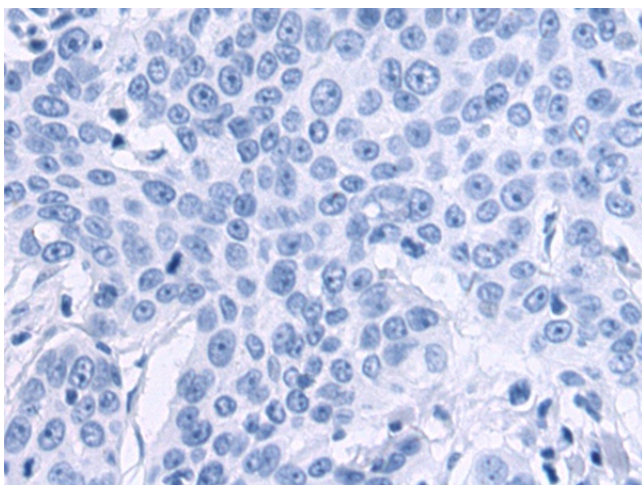
Product images:



Gel: 8%SDS-PAGE
Lysate: 40 μ g
Lane 1-2: HeLa and A172 cell lysates
Primary antibody: [TA368692] (STEAP3 Antibody)
at dilution 1/400
Secondary antibody: Goat anti rabbit IgG at
1/5000 dilution
Exposure time: 7 seconds



Immunohistochemistry of paraffin-embedded
Human cervical cancer tissue using [TA368692]
(STEAP3 Antibody) at dilution 1/50 (Original
magnification: \times 200)



Immunohistochemistry of paraffin-embedded
Human cervical cancer tissue using [TA368692]
(STEAP3 Antibody) at dilution 1/50, treated with
synthetic peptide. (Original magnification: \times 200)