

## Product datasheet for **TA368692**

### STEAP3 Rabbit Polyclonal Antibody

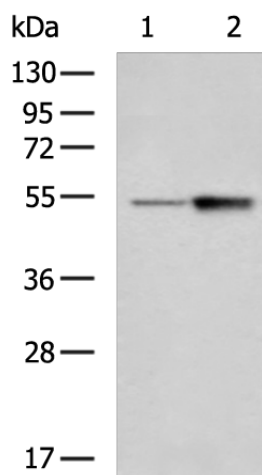
#### Product data:

|                         |   |
|-------------------------|---|
| Product Type:           | Primary Antibodies  |
| Applications:           | IHC, WB   |
| Recommended Dilution:   | WB: 500-2000<br>WB positive control: Hela and A172 cell lysates<br>IHC: 50-200<br>Positive control: Human cervical cancer<br>Predicted cell location: Cytoplasm and Cell membrane   |
| Reactivity:             | Human, Mouse, Rat   |
| Host:                   | Rabbit  |
| Isotype:                | IgG   |
| Clonality:              | Polyclonal  |
| Immunogen:              | Synthetic peptide of human STEAP3   |
| Formulation:            | pH7.4 PBS, 0.05% NaN <sub>3</sub> , 40% Glycerol  |
| Concentration:          | lot specific  |
| Purification:           | Antigen affinity purification   |
| Conjugation:            | Unconjugated  |
| Storage:                | Store at -20°C.   |
| Stability:              | 1 year  |
| Predicted Protein Size: | 55 kDa  |
| Gene Name:              | STEAP3 metalloreductase   |
| Database Link:          | <a href="#">Entrez Gene 55240 Human Q658P3</a>  |
| Background:             | This gene encodes a multipass membrane protein that functions as an iron transporter. The encoded protein can reduce both iron (Fe <sup>3+</sup> ) and copper (Cu <sup>2+</sup> ) cations. This protein may mediate downstream responses to p53, including promoting apoptosis. Deficiency in this gene can cause anemia. Alternative splicing results in multiple transcript variants. |
| Synonyms:               | 1010001D01Rik; dudlin-2; Dudulin-2; hpHyde; hTSAP6; OTTHUMP00000162093; pHyde; STMP3; TSAP6   |

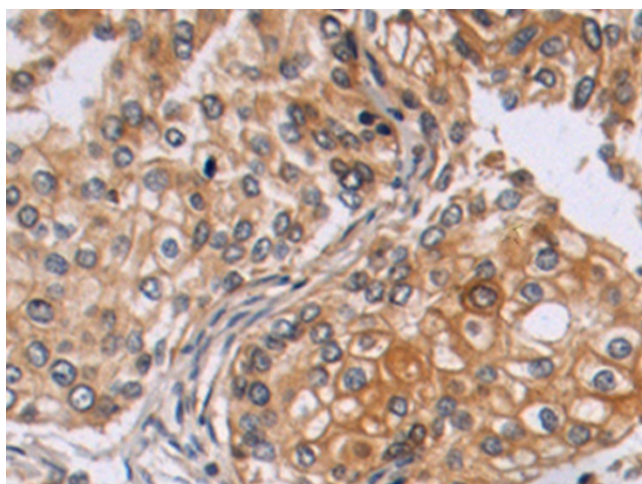


[View online »](#)

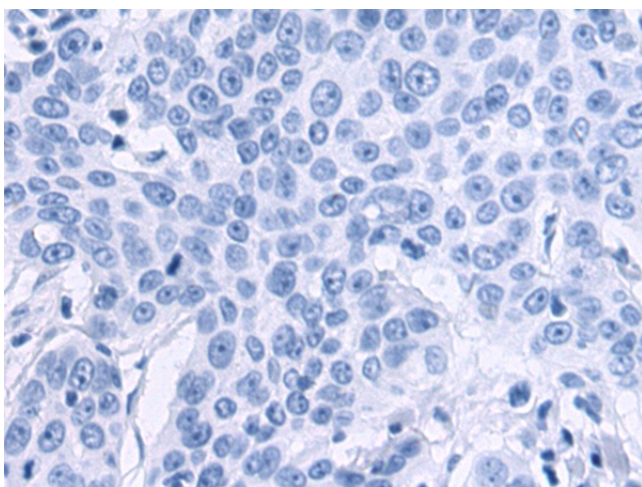
## Product images:



Gel: 8%SDS-PAGE  
Lysate: 40  $\mu$ g  
Lane 1-2: HeLa and A172 cell lysates  
Primary antibody: TA368692 (STEAP3 Antibody) at dilution 1/400  
Secondary antibody: Goat anti rabbit IgG at 1/5000 dilution  
Exposure time: 7 seconds



Immunohistochemistry of paraffin-embedded Human cervical cancer tissue using TA368692 (STEAP3 Antibody) at dilution 1/50 (Original magnification:  $\times$ 200)



Immunohistochemistry of paraffin-embedded Human cervical cancer tissue using TA368692 (STEAP3 Antibody) at dilution 1/50, treated with synthetic peptide. (Original magnification: ×200)