

## Product datasheet for **TA368689**

### RPS9 Rabbit Polyclonal Antibody

#### Product data:

Product Type:	Primary Antibodies
Applications:	IHC, WB
Recommended Dilution:	WB: 500-2000 WB positive control: Jurkat, NIH/3T3, HepG2, LOVO cell lysates IHC: 50-200 Positive control: Human cervical cancer Predicted cell location: Cytoplasm
Reactivity:	Human, Mouse, Rat
Host:	Rabbit
Isotype:	IgG
Clonality:	Polyclonal
Immunogen:	Synthetic peptide of human RPS9
Formulation:	pH7.4 PBS, 0.05% NaN <sub>3</sub> , 40% Glycerol
Concentration:	lot specific
Purification:	Antigen affinity purification
Conjugation:	Unconjugated
Storage:	Store at -20°C.
Stability:	1 year
Predicted Protein Size:	23 kDa
Gene Name:	ribosomal protein S9
Database Link:	<a href="#">Entrez Gene 6203 Human P46781</a>



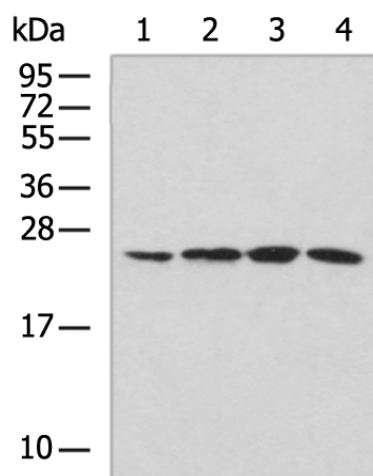
[View online »](#)

**Background:**

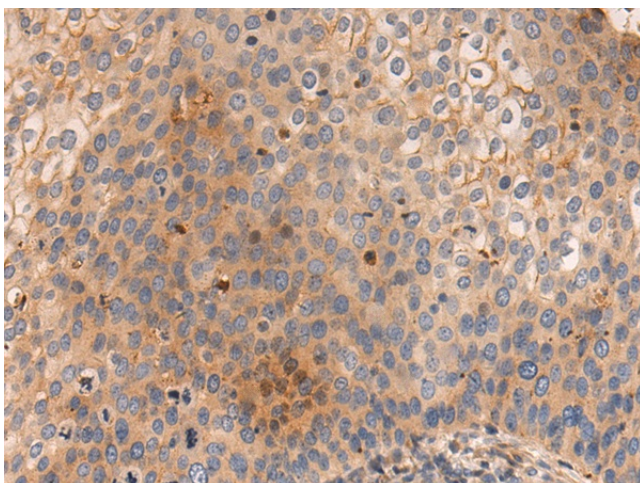
Ribosomes, the organelles that catalyze protein synthesis, consist of a small 40S subunit and a large 60S subunit. Together these subunits are composed of 4 RNA species and approximately 80 structurally distinct proteins. This gene encodes a ribosomal protein that is a component of the 40S subunit. The protein belongs to the S4P family of ribosomal proteins. It is located in the cytoplasm. Variable expression of this gene in colorectal cancers compared to adjacent normal tissues has been observed, although no correlation between the level of expression and the severity of the disease has been found. As is typical for genes encoding ribosomal proteins, multiple processed pseudogenes derived from this gene are dispersed through the genome.

**Synonyms:**

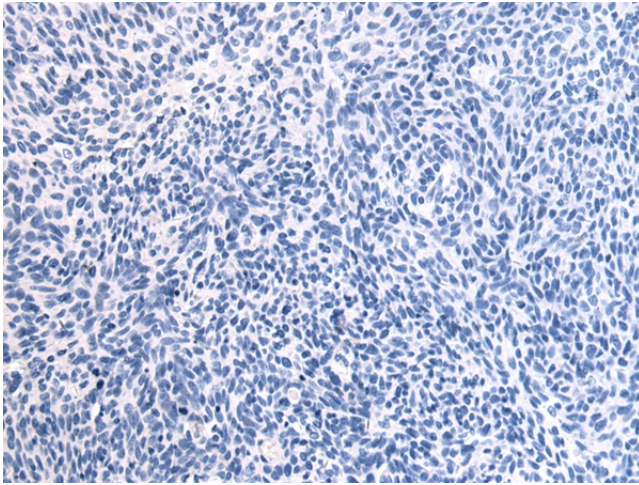
OTTHUMP00000069577; OTTHUMP00000069585

**Product images:**

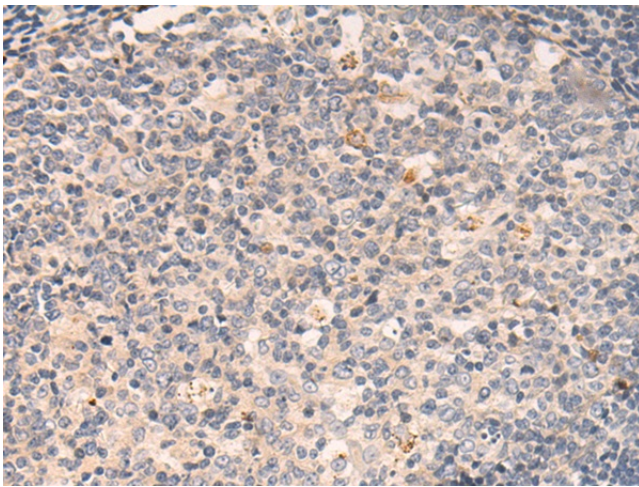
Gel: 12%SDS-PAGE  
Lysate: 40  $\mu$ g  
Lane 1-4: Jurkat  
NIH/3T3  
HepG2  
LOVO cell lysates  
Primary antibody: TA368689 (RPS9 Antibody) at dilution 1/700  
Secondary antibody: Goat anti rabbit IgG at 1/5000 dilution  
Exposure time: 1 minute



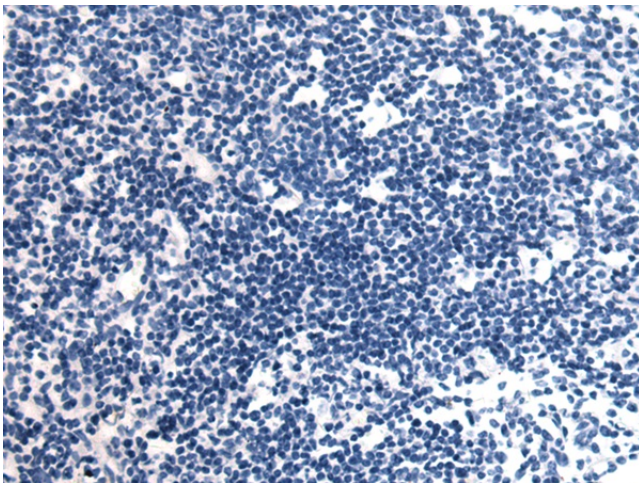
Immunohistochemistry of paraffin-embedded Human cervical cancer tissue using TA368689 (RPS9 Antibody) at dilution 1/50 (Original magnification:  $\times$ 200)



Immunohistochemistry of paraffin-embedded Human cervical cancer tissue using TA368689 (RPS9 Antibody) at dilution 1/50, treated with synthetic peptide. (Original magnification: ×200)



Immunohistochemistry of paraffin-embedded Human tonsil tissue using TA368689 (RPS9 Antibody) at dilution 1/50 (Original magnification: ×200)



Immunohistochemistry of paraffin-embedded Human tonsil tissue using TA368689 (RPS9 Antibody) at dilution 1/50, treated with synthetic peptide. (Original magnification: ×200)